

NOTES:

* KEY INTERLOCK ALLOWS ONLY ONE CIRCUIT BREAKER TO BE CLOSED AT A TIME

INTERRUPTING CAPACITY OF CIRCUIT BREAKERS SHALL BE NOT LESS THAN 20,000 AMP AT 250V DC
 INTERRUPTING CAPACITY OF ALL FUSES SHALL BE NOT LESS THAN 50,000 AMP AT 250V DC, BUSSMAN TYPE KTN OR KRP-C
 BATTERIES ----- 4R-0132
 ALL DC SWGR ----- 4R-8804
 EXIDE BATTERY CHARGER ----- 4R-8800
 SOLIDSTATE CONTROLS INCORPORATED BATTERY CHARGER ----- 10008-E-NPG

REFERENCES:

REFERENCE NO.	DWG NO.
1.	REC DWG BATTERY ----- 663343
2.	REC DWG DC SWGR ----- 663345
3.	REC DWG BATTERY CHARGER ----- 663344
4.	LIST OF ELECTRICAL DEVICES FOR PROTECTION & CONTROL CIRCUITS ----- 050024
5.	SINGLE LINE METER AND RELAY DIAG 125VDC SYSTEM SH 1 ----- 437546
6.	SINGLE LINE METER AND RELAY DIAG 480V SYSTEM BUS SECT "1G" ----- 437542
7.	OUTLINE/SCHEMATICS ----- 663345-115 AND 116
8.	DIAGRAM OF CONNECTION 125 VDC DISTRIBUTION PANEL 12 ----- 444301

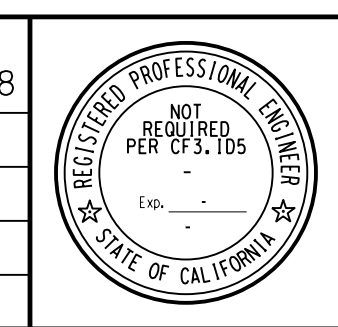
125V DC DISTRIBUTION PANEL 12
 LOC: SD12

NUCLEAR SAFETY RELATED

KEY DWG. SECTION 1C

UNIT 1

DATE	REVISION DESCRIPTION	DWG SCALES
07-09-2018	Revised Per DDN-2*1678	BILL OF MATL:
D.O. IAZ1		SUPDS:
R.E. RXG2		DRAWING BY:
I.V. N/A		SHEET
P.E. N/A		PAGE
		REV



ELECTRICAL
 SINGLE LINE METER AND RELAY DIAG
 125 VOLT DC SYSTEM
 DIABLO CANYON POWER PLANT
 PACIFIC GAS AND ELECTRIC COMPANY
 SAN FRANCISCO, CALIFORNIA

DWG SCALES	BILL OF MATL:	SUPDS:	DRAWING BY:	SHEET	PAGE	REV
				445075	1	0
						21

RASTER=445075-1-0.dgn
 C:\N\445075-1-0.dgn
 C:\N\445075-1-0.dgn
 C:\N\445075-1-0.dgn
 07-09-2018