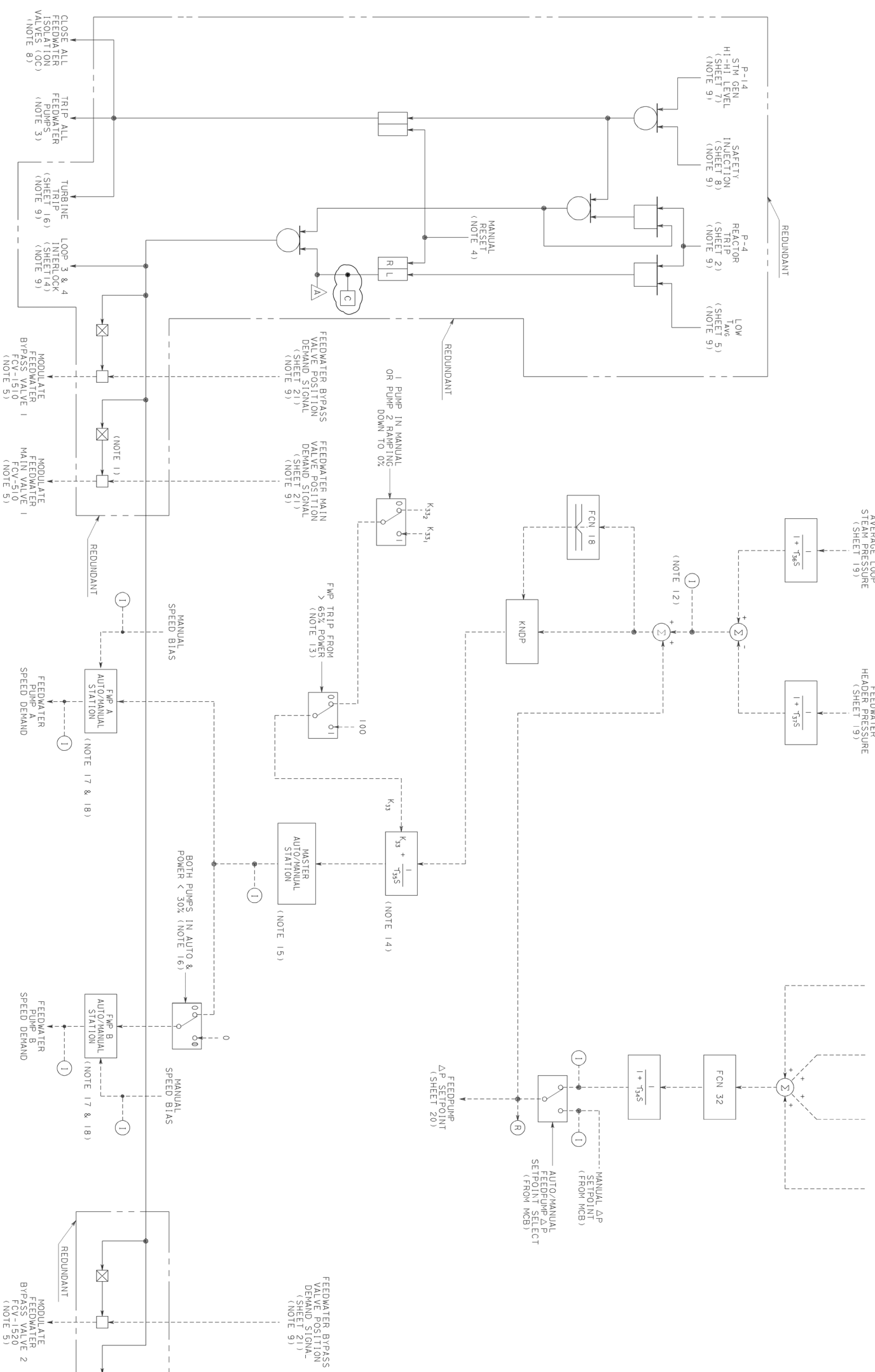


1. ANALOG GATE CONSISTS OF 2 SOLENOID VENT VALVES IN SERIES TO REDUNDANTLY INTERLOCK THE AIR LINE BETWEEN EACH VALVE DIAPHRAM AND ITS ASSOCIATED POSITIONER. THE SOLENOID VALVES ARE DE-ENERGIZED TO VENT, CAUSING THE MAIN FEEDWATER VALVE TO CLOSE IN 7 SECONDS.
2. ALL CIRCUITS IN THIS SHEET ARE NOT REDUNDANT EXCEPT WHERE INDICATED "REDUNDANT".
3. DELETED
4. THE REDUNDANT MANUAL RESET CONSISTS OF TWO MOMENTARY CONTROLS ON THE CONTROL BOARD, ONE OF EACH TRAIN.
5. OPEW/SHUT INDICATION FOR EACH FEEDWATER CONTROL VALVE IN CONTROL ROOM.
- 6.
7. FEEDWATER PUMPS ARE TRIPPED BY TRAIN "B" ONLY.
8. FEEDWATER ISOLATION VALVES ARE CLOSED BY TRAIN "A" ONLY.
9. SHEET NUMBERS REFER TO THE REFERENCE NUMBERS BELOW.
10. PROJECTOR PHONES SIGNAL TON USED FOR CONTROL.
11. THIS DRAWING ILLUSTRATES THE FUNCTIONAL REQUIREMENTS OF THE REACTOR CONTROL AND PROTECTION SYSTEM. THIS DRAWING DOES NOT REPRESENT ACTUAL HARDWARE IMPLEMENTATION. FOR HARDWARE IMPLEMENTATION, REFER TO THE APPLICABLE SCHEMATIC.
12. BOARD INDICATION IS FROM A DFPCS OUTPUT. ALL OTHER INDICATIONS ON THIS DRAWING ARE PROVIDED ON THE DFPCS HMI.
13. RESETS WHEN PI CONTROLLER OUTPUT REACHES 100%. ALSO SETS PUMP BIASES TO 0.
14. TRACKS HIGHER FWP A/M STATION DEMAND WHEN BOTH PUMPS ARE IN MANUAL.
15. SWITCHES TO MANUAL WHEN BOTH FWP A/M STATIONS ARE IN MANUAL.
16. PUMPS PUMP 2 DEMAND TO 0%. ONCE PUMP 2 IS AT 0%, SWITCHES ITS A/M STATION TO MANUAL.
17. TRACKS ACTUAL PUMP SPEED WHEN MODWARD PRESS 15 IN LOCAL MANUAL OR PRESSURE LIMITING. A/M GOES TO MANUAL WHEN IT COMES OUT OF TRACK MODE WITH DEMAND = ACTUAL SPEED AT TIME OF TRANSITION.
18. REFER TO THE DFPCS FUNCTIONAL REQUIREMENTS DOCUMENT DRAWING 6631 95-27 FOR LOGIC DESCRIPTION.



REFERENCES (NOTE 9)

NO.	DESCRIPTION	REF. NO.
1.	FUNCTIONAL LOGIC DIAGRAM INDEX AND SYMBOLS	495871
2.	FUNCTIONAL LOGIC DIAGRAM REACTOR TRIP SIGNALS	5653074-1
3.	FUNCTIONAL LOGIC DIAGRAM NUCLEAR INSTR PERMISSIVES AND BLOCKS	5653074-2
4.	FUNCTIONAL LOGIC DIAGRAM NUCLEAR INSTR PERMISSIVES AND BLOCKS	5653074-3
5.	FUNCTIONAL LOGIC DIAGRAM PRIMARY COOLANT SYSTEM TRIP SIGNALS	5653074-4
6.	FUNCTIONAL LOGIC DIAGRAM PRESSURIZER TRIP SIGNALS	5653074-5
7.	FUNCTIONAL LOGIC DIAGRAM STEAM GENERATOR TRIP SIGNALS	5653074-6
8.	FUNCTIONAL LOGIC DIAGRAM SAFEGUARDS ACTUATION SIGNALS	5653074-7
9.	FUNCTIONAL LOGIC DIAGRAM ROD CONTROLS AND ROD BLOCKS	5653074-8
10.	FUNCTIONAL LOGIC DIAGRAM PRESSURIZER HEATER CONTROL	5653074-9
11.	FUNCTIONAL LOGIC DIAGRAM PRESSURIZER HEATER CONTROL	5653074-10
12.	FUNCTIONAL LOGIC DIAGRAM FEEDWATER CONTROL AND ISOLATION	5653074-11
13.	FUNCTIONAL LOGIC DIAGRAM FEEDWATER CONTROL AND ISOLATION	5653074-12
14.	FUNCTIONAL LOGIC DIAGRAM FEEDWATER CONTROL AND ISOLATION	5653074-13
15.	FUNCTIONAL LOGIC DIAGRAM AUXILIARY FEEDWATER PUMPS STARTUP	5653074-14
16.	FUNCTIONAL LOGIC DIAGRAM TURBINE TRIPS, RUNBACKS & SIGNALS	5653074-15
17.	FUNCTIONAL LOGIC DIAGRAM ANSK SIGNALS	5653074-16
18.	FUNCTIONAL LOGIC DIAGRAM SEISMIC TRIP	5653074-17
19.	FUNCTIONAL LOGIC DIAGRAM DIGITAL FW CONT SYS INPUT SIGNAL VALIDATION	5653074-18
20.	FUNCTIONAL LOGIC DIAGRAM DIGITAL FW CONT SYS FW FLOW CONTROLLER & CY DEMAND	5653074-19
21.	FUNCTIONAL LOGIC DIAGRAM DIGITAL FW CONT SYS VCV SED & TRACKING LOGIC	5653074-20
22.	FUNCTIONAL LOGIC DIAGRAM DIGITAL FW CONT SYS SIGNAL SELECTOR LOGIC	5653074-21
23.	DRAWING INDEX SOLID STATE PROTECTION SYS INTERCONNECTION & SCHEM DIAGRAM	108D442-1

WE DWG PG&E DWG

NO.	DESCRIPTION	REF. NO.
1.	FUNCTIONAL LOGIC DIAGRAM INDEX AND SYMBOLS	495871
2.	FUNCTIONAL LOGIC DIAGRAM REACTOR TRIP SIGNALS	5653074-1
3.	FUNCTIONAL LOGIC DIAGRAM NUCLEAR INSTR PERMISSIVES AND BLOCKS	5653074-2
4.	FUNCTIONAL LOGIC DIAGRAM NUCLEAR INSTR PERMISSIVES AND BLOCKS	5653074-3
5.	FUNCTIONAL LOGIC DIAGRAM PRIMARY COOLANT SYSTEM TRIP SIGNALS	5653074-4
6.	FUNCTIONAL LOGIC DIAGRAM PRESSURIZER TRIP SIGNALS	5653074-5
7.	FUNCTIONAL LOGIC DIAGRAM STEAM GENERATOR TRIP SIGNALS	5653074-6
8.	FUNCTIONAL LOGIC DIAGRAM SAFEGUARDS ACTUATION SIGNALS	5653074-7
9.	FUNCTIONAL LOGIC DIAGRAM ROD CONTROLS AND ROD BLOCKS	5653074-8
10.	FUNCTIONAL LOGIC DIAGRAM PRESSURIZER HEATER CONTROL	5653074-9
11.	FUNCTIONAL LOGIC DIAGRAM PRESSURIZER HEATER CONTROL	5653074-10
12.	FUNCTIONAL LOGIC DIAGRAM FEEDWATER CONTROL AND ISOLATION	5653074-11
13.	FUNCTIONAL LOGIC DIAGRAM FEEDWATER CONTROL AND ISOLATION	5653074-12
14.	FUNCTIONAL LOGIC DIAGRAM FEEDWATER CONTROL AND ISOLATION	5653074-13
15.	FUNCTIONAL LOGIC DIAGRAM AUXILIARY FEEDWATER PUMPS STARTUP	5653074-14
16.	FUNCTIONAL LOGIC DIAGRAM TURBINE TRIPS, RUNBACKS & SIGNALS	5653074-15
17.	FUNCTIONAL LOGIC DIAGRAM ANSK SIGNALS	5653074-16
18.	FUNCTIONAL LOGIC DIAGRAM SEISMIC TRIP	5653074-17
19.	FUNCTIONAL LOGIC DIAGRAM DIGITAL FW CONT SYS INPUT SIGNAL VALIDATION	5653074-18
20.	FUNCTIONAL LOGIC DIAGRAM DIGITAL FW CONT SYS FW FLOW CONTROLLER & CY DEMAND	5653074-19
21.	FUNCTIONAL LOGIC DIAGRAM DIGITAL FW CONT SYS VCV SED & TRACKING LOGIC	5653074-20
22.	FUNCTIONAL LOGIC DIAGRAM DIGITAL FW CONT SYS SIGNAL SELECTOR LOGIC	5653074-21
23.	DRAWING INDEX SOLID STATE PROTECTION SYS INTERCONNECTION & SCHEM DIAGRAM	108D442-1