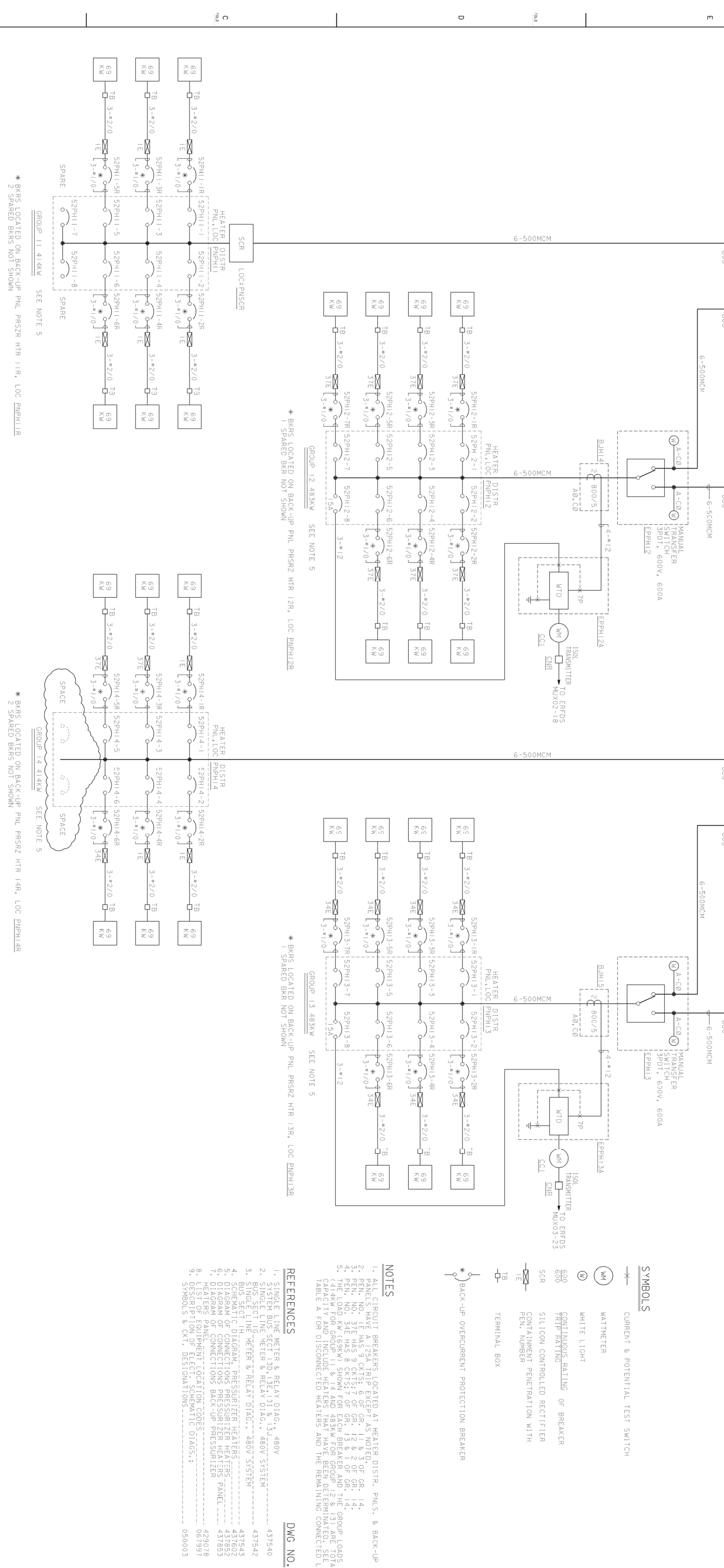


TABLE A
DETERMINATED HEATERS



SYMBOLS

- ⊗ CURRENT & POTENTIAL TEST SWITCH
- ⊙ WATTMETER
- ⊙ WHITE LIGHT
- ⊙ CONTINUOUS RATING OF BREAKER
- ⊙ TRIP RATING
- ⊙ SILICON CONTROLLED RECTIFIER
- ⊙ CONTAINMENT PENETRATION WITH PEN. NUMBER
- ⊙ TERMINAL BOX
- ⊙ BACK-UP OVERCURRENT PROTECTION BREAKER

NOTES

1. ALL CIRCUIT BREAKERS LOCATED AT HEATER DISTR. PNLS. & BACK-UP PANELS HAVE A 125A TRIP EXCEPT AS NOTED. OF GR. 14.
2. PEN. NO. 1E HAS 9 CKTS. OF GR. 1 & 3 OF GR. 14.
3. PEN. NO. 34E HAS 8 CKTS. OF GR. 15 & 1 OF GR. 14.
4. THE LOAD KW (69KW) SHOWN FOR EACH BREAKER AND THE GROUP LOADS (414KW FOR GROUP 11 & 14 AND 483KW FOR GROUP 12 & 13) ARE TOTAL CAPACITY AND INCLUDE HEATERS THAT HAVE BEEN DETERMINATED. SEE TABLE A FOR DISCONNECTED HEATERS AND THE REMAINING CONNECTED LOAD.

REFERENCES

1. SINGLE LINE METER & RELAY DIAG., 480V
2. SYSTEM BUS SECT 30, 13E, 13I & 13J
3. SINGLE LINE METER & RELAY DIAG., 480V SYSTEM
4. SINGLE LINE METER & RELAY DIAG., 480V SYSTEM
5. SINGLE LINE METER & RELAY DIAG., 480V SYSTEM
6. DIAGRAM OF CONNECTIONS PRESSURIZER HEATERS
7. DIAGRAM OF CONNECTIONS BACK-UP PRESSURIZER HEATERS
8. HEATERS PANEL - RAT OCCULTION CORRECTION
9. DESCRIPTION OF ELECTRICAL DIAGS.
10. SYMBOLS & CKT. DESIGNATIONS

DWG NO.

437540

