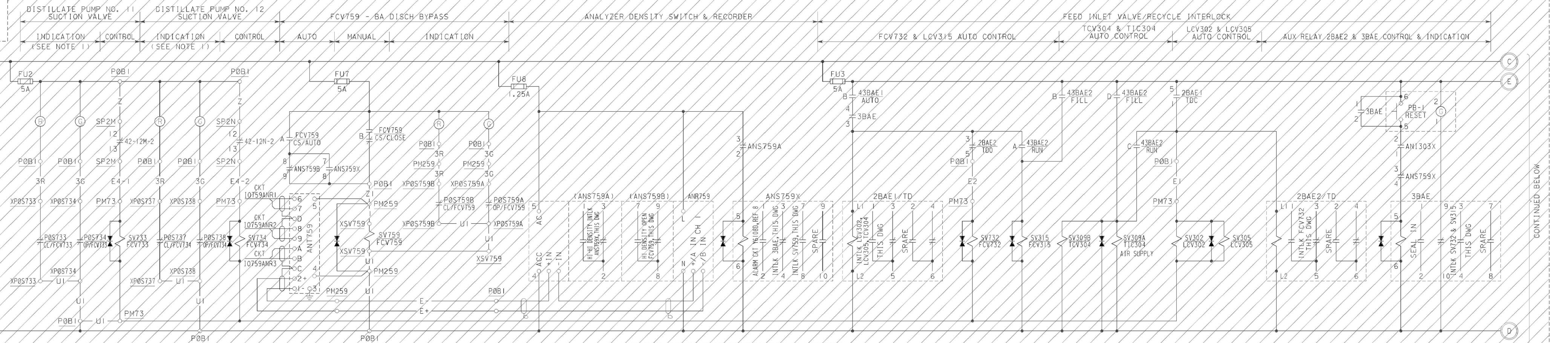
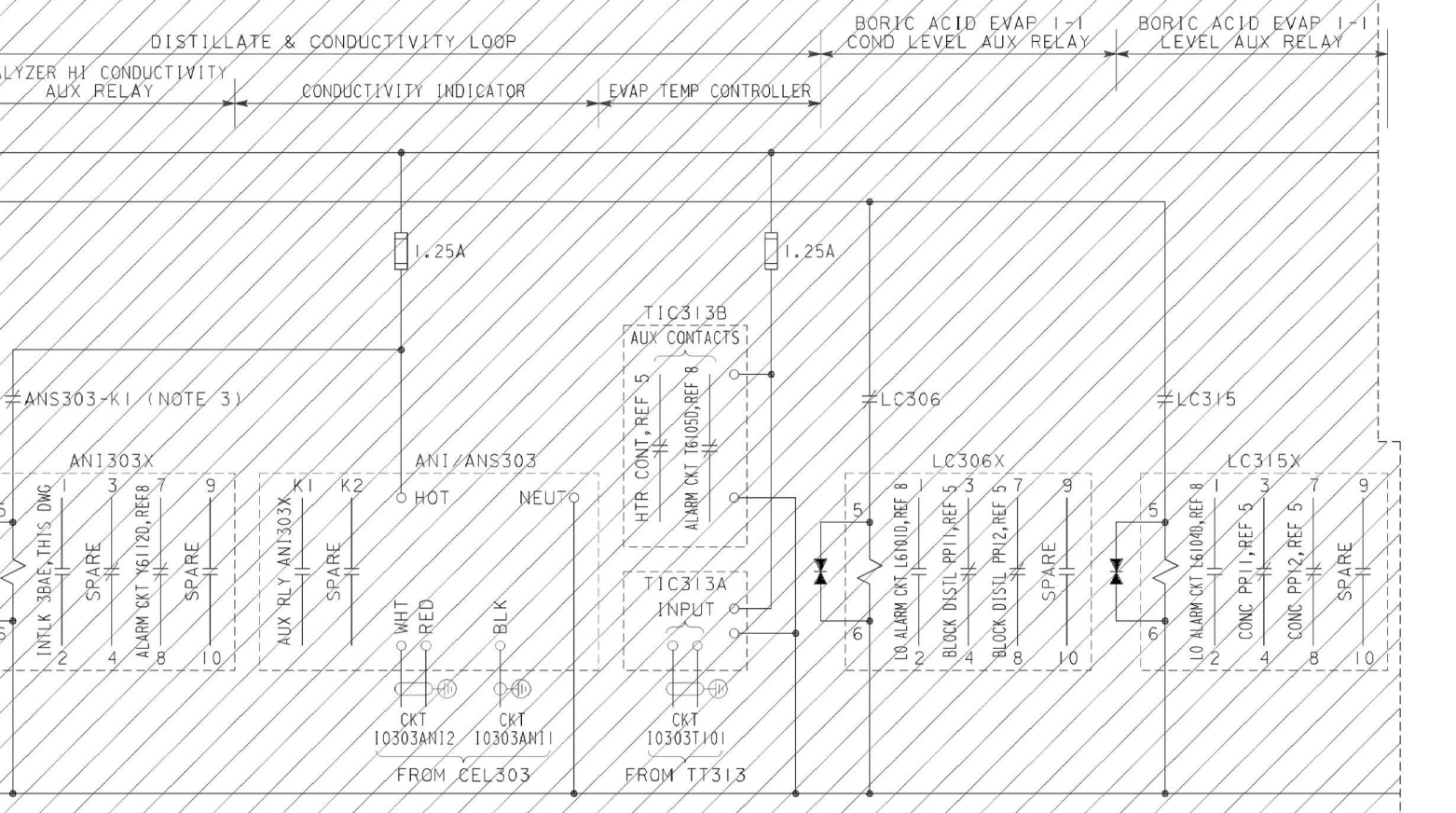


DEVICE NO.	FUNCTION	RATING	MFR	TYPE	CATALOG OR REF. DWG	REMARKS
2BAE1	B/A EVAP I-1 DISTL COOLER TD RLY	120VAC	AGASTAT	245D	2412AE	IN 10 200 SEC TIME DELAY
2BAE2	B/A EVAP I-1 VENT HEADER TO RLY	120VAC	AGASTAT	705D	7012AE	20 TO 200 SEC TD
3BAE	B/A LEW I-1 CONDUCTIVITY RESET AUX RLY	120VAC	WE	AR	AR440A	
ANI/ANS-303	BORIC ACID DISTILLATE PUMPS DISCH. HDR. ANALYZER				(12)	NO OUTPUT ON HIGH CONDUCTIVITY
ANI303X	BORIC ACID DISTILLATE PUMPS DISCH. ANALYZER AUX. RELAY	120VAC	WE	AR	AR440A	
LC315X	BORIC ACID EVAP I-1 LEVEL AUX RELAY	120VAC	WE	AR	AR440A	
LC315	B/A EVAP I-1 LVL. CONTROLLER				(12)	CONTACT CLOSURES ON LOW LEVEL
LC306	B/A EVAP I-1 COND. LVL. SWITCH				(12)	CONTACT CLOSURES ON LOW LEVEL
SV305	SOLENOID VALVE, BORIC ACID DISTILLATE COOLER OUTLET				(12)	ENERGIZED TO CLOSE
SV302	SOLENOID VALVE, BORIC ACID DISTILLATE PUMP RECIRC TO EVAP				(12)	
SV315	SOLENOID VALVE, FEED PREHEATER OUTLET				(12)	
SV309A	SOLENOID VALVE, B/A EVAP I-1 PREHEATER AUX. STEAM FLOW				(12)	
TIC313A/TIC313B	SOLENOID VALVE, DISCHARGE BYPASS				(12)	ENERGIZED TO CLOSE
POS	VALVE POSITION SWITCH				(12)	
TIC313A/TIC313B	BORIC ACID EVAP I-1 TEMP. INDIC. & CONT				(12)	CONTACTS OPEN ON HIGH HTR TEMP
LC306X	BORIC ACID EVAP I-1 COND. LEVEL AUX. RELAY	120VAC	WE	AR	AR440A	MOUNT RELAY IN REAR OF B/A EVAP PNL
ANR759	DENSITY RECORDER				(12)	
ANS759X	DENSITY AUX. RELAY	120VAC	WE	AR	AR440A	
ANS759A/B	DENSITY SWITCH				(12)	
ANT759	B/A EVAP I-1 RECIRC DENSITY SAMPLE				(12)	
TE759, YE759					(12)	

ABANDONED IN PLACE (SEE NOTE 4)



BORIC ACID EVAPORATOR VALVE CONTROL
CIRCUIT NO. RCV158 TO RCV175, RCV300 TO RCV333



- EQUIPMENT LOCATIONS**
- P0B1 — AUX BLOG CONT PNL UNIT 1 BA EVAP
 - XP05759 — MECH INSTR POST59 (LOCALLY MTD)
 - PM259 — MECHANICAL PANEL NO. 259
 - PY16 — PANEL 16, INSTRUMENT AC DISTRIBUTION
 - POCV1 — AUX BLOG CONT PNL
 - BTK58 — TERMINAL BOX K58
 - BTK58Z — TERMINAL BOX K58 - UNIT 2
 - SP2N — 480V MCC 12 BUS SECT N

- NOTES**
- EACH LIGHT TO BE 28V AND BE PROVIDED WITH A SERIES RESISTOR RATED 2400Ω, 5W.
 - DELETED
 - CONTACT SHOWN IN ITS "NORMAL" (LOW CONDUCTIVITY) SYSTEM CONDITION.
 - THESE COMPONENTS ARE CONSIDERED ABANDONED IN-PLACE. SEE APPLICABLE DIAGRAM OF CONNECTION DRAWINGS FOR ACTUAL WIRING AND TO DETERMINE IF COMPONENTS ARE INSTALLED OR REMOVED.

REFERENCES

DESCRIPTION	DWG NOS.
1. DESCRIPTION OF ELEC SCHEM DIAG SYMBOLS & CKT DESIGNATIONS	050003
2. EQUIPMENT LOCATION NUMBERS	101900
3. S/L METER & RELAY DIAG - INSTRUMENT AC, 120V	445294
4. SCHEM DIAG CHEMICAL & VOLUME CONTROL SYS, SH. 1	437597
5. SCHEM DIAG CHEM & VOL CONT SYS B.A. EVAP I-1 MISC EQUIP	491725
6. SCHEM DIAG C.V.C.S. & MAKE-UP WATER PUMPS	437598
7. SCHEM DIAG REACTOR COOLANT MAKE-UP CONTROL	437596
8. SCHEM DIAG AUX ANNUNCIATOR, SH. 1	437706
9. SCHEM DIAG MAIN ANNUNCIATOR, SH. 20	501140
10. SCHEM DIAG CHEM & VOL CONT SYS MISC EQUIP (UNIT 2)	477315
11. SCHEM DIAG CHEM & VOL CONT SYS (UNIT 2)	441322
12. INSTRUMENT REFERENCE	102038
13. INSTRUCTION MANUAL BORIC ACID EVAPORATOR	663210-148
14. SCHEM DIAG AUX BD PLC POEC-10 DIG INPUTS & POWER	470780

CONTACTS	POSITION	REMARKS
1-2	CLOSE	THIS DWG
3-4	AUTO	THIS DWG
5-6	OPEN	THIS DWG

CONTROL SWITCH: FCV759
USED AT LOCATION P0B1
3 POSITION MAINTAINED
CUTLER-HAMMER, CAT. NO. 10250T1322-11M36

CONTACTS	POSITION	REMARKS
1-2	RECYCLE	SPARE
3-4	AUTO	THIS DWG

TRANSFER SWITCH: 43BAE1
USED AT LOCATION P0B1
NO SPRING RETURN
CUTLER-HAMMER, CAT. NO. 10250T1311-11M36

CONTACTS	POSITION	REMARKS
1-2	RUN	THIS DWG
3-4	FILL	THIS DWG
5-6		THIS DWG
7-8		THIS DWG

TRANSFER SWITCH: 43BAE2
USED AT LOCATION P0B1
NO SPRING RETURN
CUTLER-HAMMER, CAT. NO. 10250T1311-11M36

KEY DWG - SECTION 4

UNIT 1

DATE 08-02-2011	REVISION DESCRIPTION REVISED PER DAS-6*420	ELECTRICAL SCHEMATIC DIAGRAM CHEMICAL AND VOLUME CONTROL SYSTEM BORIC ACID EVAPORATOR CONTROL VALVES DIABLO CANYON POWER PLANT PACIFIC GAS AND ELECTRIC COMPANY SAN FRANCISCO, CALIFORNIA	DWG SCALE:
D.D. JBM	REVISED PER DAS-6*420		BILL OF MATL:
R.E. SH5		SUPDS BY:	
I.V.		DRAWING	
P.E. AGB2		SHEET	
		PAGE	
		REV	
		437599	1 0 23