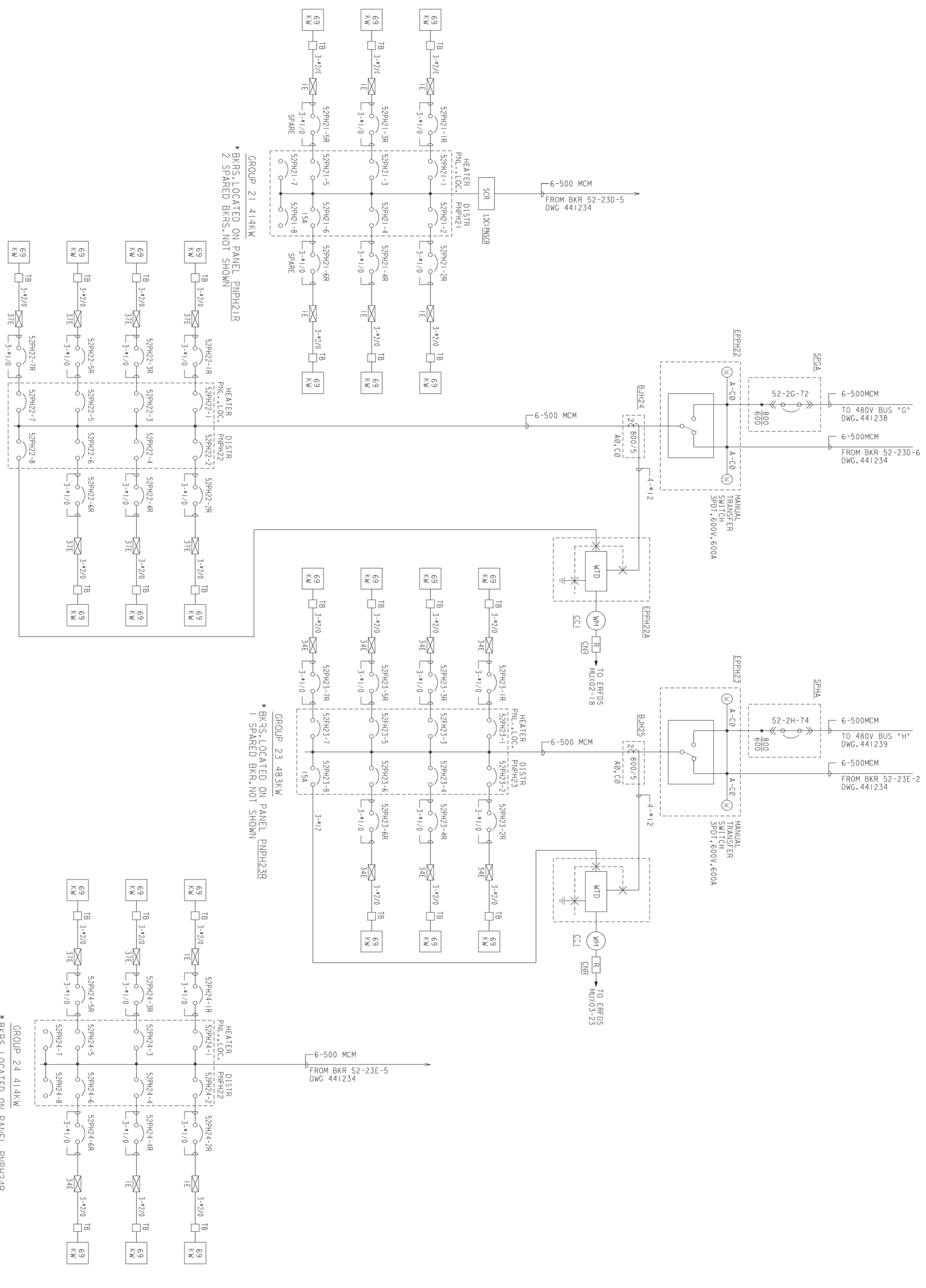


GROUP	BREAKER NO.	DISCONNECTED HEATERS	BREAKER CONNECTED LOAD	TOTAL GROUP CONNECTED LOAD
21	52PH21-2	#56 (SEE NOTE 6) 52PH21-5 #51 (SEE NOTE 7)	69KW 46KW	391KW
22	52PH22-1	#1 52PH22-2 #10, #12	(46KW) 23KW	(414KW)
23	52PH23-1	#13 52PH23-2 #39 52PH23-3 #2 52PH23-5 #22	46KW 46KW 46KW 46KW 46KW	(368KW)
24	52PH24-4	#9 52PH24-5 #26	0KW 46KW	(328KW)

TABLE A
DETERMINATED HEATERS
(SEE NOTE 5, 6 & 7)



SYMBOLS

- 600 CONTINUOUS RATING
- 600 TRIP RATING
- SCR SILICON CONTROLLED RECTIFIER
- CONTAINMENT PENETRATION WITH PEN NUMBER
- CURRENT TEST SWITCH
- WATTMETER
- WHITE LIGHT
- EXISTING PRIMARY BKR.
- BACK-UP OVERCURRENT PROTECTION BREAKER
- TYPICAL BREAKER ARRANGEMENT FOR LOAD INSIDE CONTAINMENT

NOTES

1. ALL CIRCUIT BREAKERS LOCATED AT HEATER DISTR. PNL.S HAVE 12.5A TRIP, EXCEPT AS INDICATED.
2. PEN NO. 1E HAS 9 CR1S; 6 0" GR.21 & 3 0" GR.24
3. PEN NO. 37E HAS 9 CR1S; 7 0" GR.22 & 2 0" GR.24
4. PEN NO. 34E HAS 8 CR1S; 7 0" GR.23 & 1 0" GR.24
5. THE LOAD KW (69KW) SHOWN FOR EACH BREAKER AND THE GROUP LOADS (414KW FOR GROUP 21 & 24 AND 483KW FOR GROUP 22 & 23) ARE TOTAL CAPACITY AND INCLUDE HEATERS THAT HAVE BEEN DETERMINATED. SEE TABLE A FOR DISCONNECTED HEATERS AND THE REMAINING CONNECTED LOAD.
6. HEATER #56 IN CONTROL GROUP 21 FAILED AND IS DISCONNECTED. HEATER #7 FROM BACKUP GROUP 24 HAS BEEN RECONNECTED IN ITS PLACE IN ORDER TO MAINTAIN THE TOTAL CONNECTED LOAD IN CONTROL GROUP 21 AT 414KW.
7. HEATER #71 IN CONTROL GROUP 21 FAILED AND IS DISCONNECTED. HEATER #11 FROM BACKUP GROUP 24 HAS BEEN RECONNECTED IN ITS PLACE IN ORDER TO MAINTAIN THE TOTAL CONNECTED LOAD IN CONTROL GROUP 21 AT 414KW.
- 8.
9. LIST OF EQUIPMENT LOCATION CODES----- 103013

REFERENCES

1. SINGLE LINE METER & RELAY DIAG. 480V SYSTEM BUS SECTIONS 23D, 23E & 23U----- 441234
2. SINGLE LINE METER & RELAY DIAG. 480V SYSTEM BUS SECTION 2G----- 441236
3. SINGLE LINE METER & RELAY DIAG. 480V SYSTEM BUS SECTION 2H----- 441239
4. SCHEMATIC DIAGRAM, PRESSURIZER HEATERS, SH. 1----- 441314
5. SCHEMATIC DIAGRAM, PRESSURIZER HEATERS, SH. 2----- 441317
6. DIAGRAM OF CONNECTIONS, PRESSURIZER HEATERS----- 441383
7. DIAGRAM OF CONNECTIONS, ELEV. 100'-0", 115'-0", 128'-0" & 140'-0" AREA----- 500628
- 8.
9. LIST OF EQUIPMENT LOCATION CODES----- 103013

DWG NO. 441218

NUCLEAR SAFETY RELATED