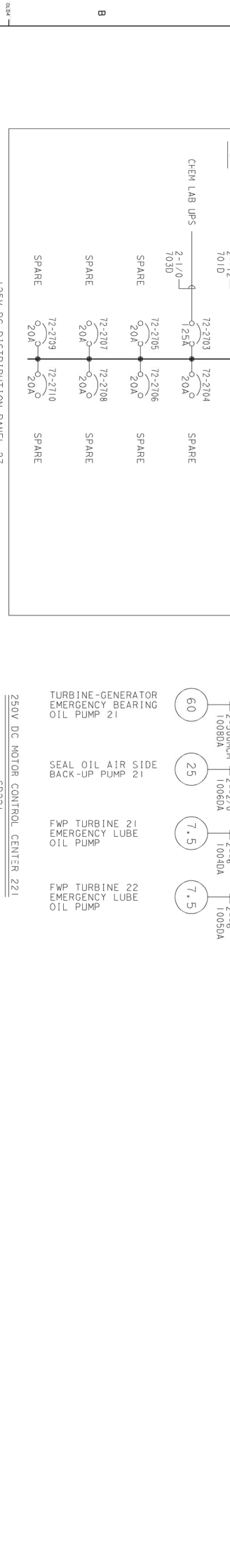
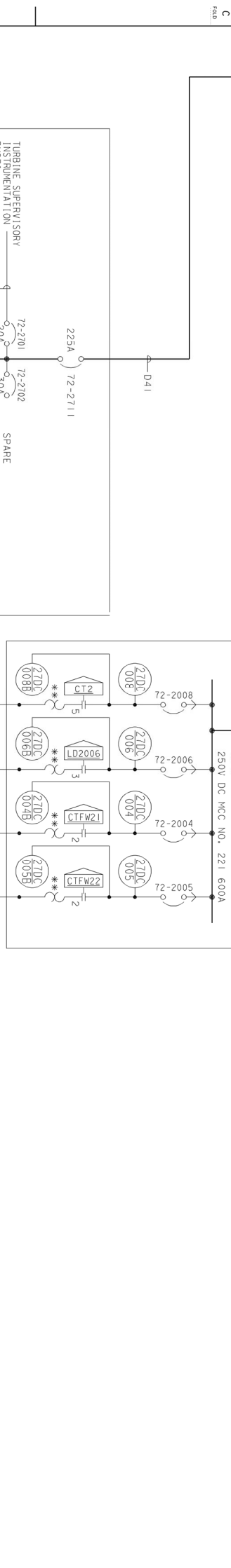
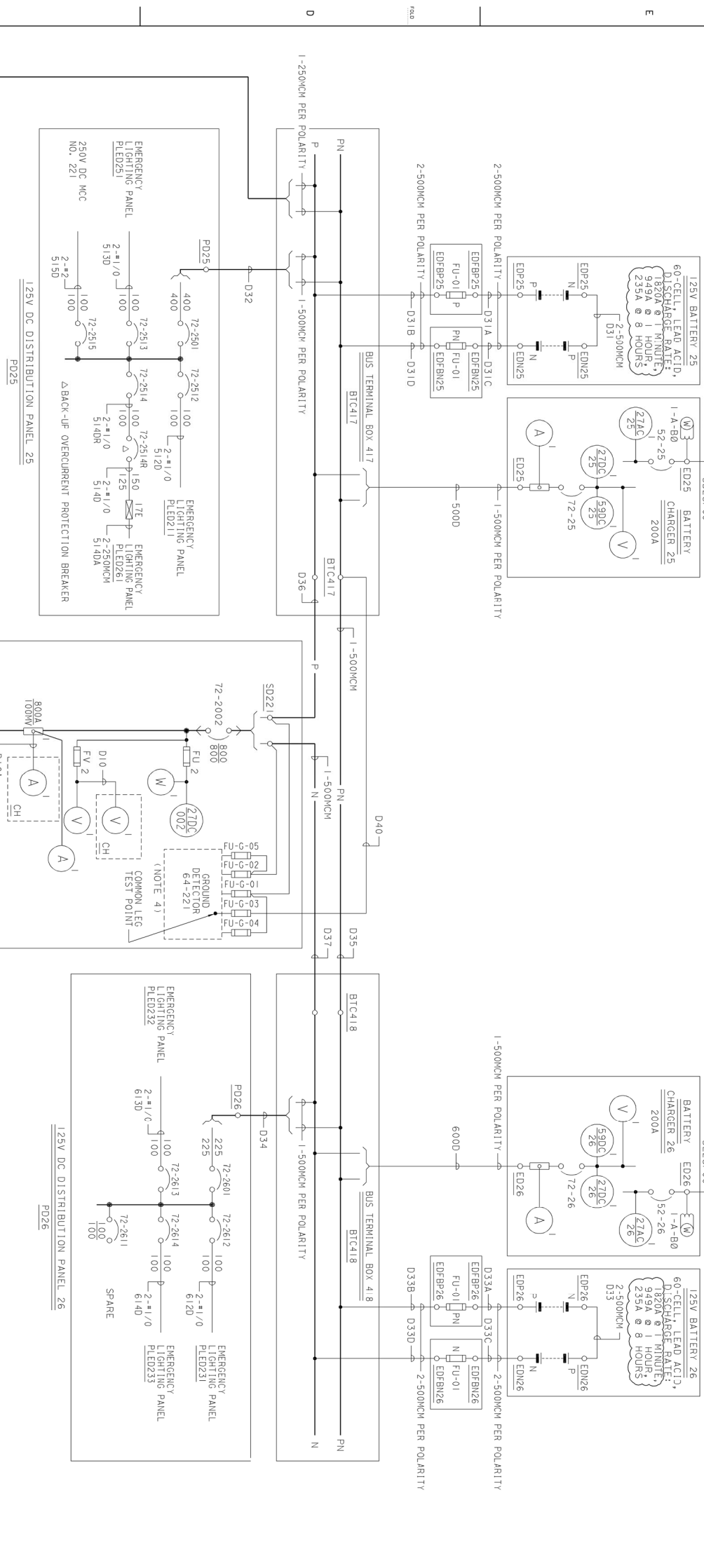


52-250-28-52-25E-26	480V AC BATT CHARGER FEEDER	100A	100A		SEE REF 5
72-2901	125V DC BATT CHARGER FEEDER	400A	400A		MANUALLY OPERATED
72-2512-25-3, 2514, 2515, 2611, 2612, 2613, 2614, 2708	DISTR PANEL BRANCH BREAKER	100A	100A	100A	100A
52-25-26	125V DC BATT CHARGER				SEE REF 3, SH 38
72-2514R	DISTR PANEL BRANCH BREAKER	150A	125A	100A	100A
72-2701, 2702, 2703, 2704, 2705, 2706, 2707	DISTR PANEL BRANCH BREAKER	100A	20A	100A	100A

DEVICE TYPE OR NUMBER	FUNCTION	RATING	MFR	TYPE	CATALOG NO. OR REF. DWG	REMARKS
27DC-004B	250V DC MOTOR STARTER	250V DC	GE	NGV17A4	663345-93	
27DC-005B	250V DC MOTOR STARTER CIRCUIT LV RELAY	250V DC	GE	NGV17A4	663345-93	
27DC-006B	250V DC MOTOR STARTER CIRCUIT LV RELAY	250V DC	GE	NGV17A4	663345-93	
27DC-008B	250V DC MOTOR STARTER CIRCUIT LV RELAY	250V DC	GE	NGV17A4	663345-93	
AMMETER	BATTERY CHARGER	0-300A			663345-93	CHARGERS NOS. 25 & 26
AMMETER	MCC CURRENT	0-800A/100MW			663345-93	250V DC MCC221
VOLTMETER	BATTERY CHARGER	0-150V			663345-93	CHARGERS NOS. 25 & 26
VOLTMETER	BATTERY CHARGER	0-300V			663345-93	250V DC MCC221
27DC-004	MOTOR UNDERVOLTAGE RELAY	250V DC	GE	NGV17A4	663345-93	SEE REF 7, 8, 9, 10 & 11
005, 006, 008						
27DC-25, 26	BATTERY CHARGER UV RELAY	125V DC	SV	WESTINGHOUSE	ALARM, REF 14	
59DC-25, 26	BATT CHARGER OV AUX RELAY				ALARM, REF 12	
64-221	GROUND DETECTOR RELAY				DWG 333354	PART OF BATTERY CHARGER
27AC25, 26	BATTERY CHARGER UV RELAY					
27DC-002	UNDERVOLTAGE RELAY	250V DC	GE	NGV17A4	663345-93	250V DC MCC221

METER & RELAY TABLE



- LEGEND**
- 102006 CONTROL STATION WITH AUTO STARTING DEVICE WITH LOCATION NUMBER
- REFERENCES**
- | | |
|--|----------------|
| 1. RECORD DRAWING BATTERY CHARGER | DWG NO. 663343 |
| 2. RECORD DRAWING 250V DC MOTOR CONTROL CENTER | 663345 |
| 3. RECORD DRAWING BATTERY CHARGER | 663345 |
| 4. SCHEMATIC DIAGRAM FOR GROUND DETECTOR 125/250V DC BUSES | 333354 |
| 5. SCHEMATIC DIAGRAM FOR GROUND DETECTOR 480V SYS BUS SECTIONS 25D & 25E | 333354 |
| 6. SINGLE LINE METER & RELAY DIAGRAM 480V SYS BUS SECTIONS 25D & 25E | 441236 |
| 7. SCHEMATIC DIAGRAM MAIN TURBINE AUXILIARY PUMPS | 441240 |
| 8. SCHEMATIC DIAGRAM MAIN TURBINE AUXILIARY PUMPS | 441240 |
| 9. SCHEMATIC DIAGRAM SEAL OIL, STATOR COOLING & HYDROGEN CONTROL SYS | 441250 |
| 10. SCHEMATIC DIAGRAM MAIN ANNUNCIATOR | 441252 |
| 11. SCHEMATIC DIAGRAM MAIN ANNUNCIATOR | 500778 |
| 12. SCHEMATIC DIAGRAM MAIN ANNUNCIATOR | 500779 |
| 13. BACK-UP OVERCURRENT BREAKER | 6000378 |
| 14. SCHEMATIC DIAGRAM MAIN ANNUNCIATOR | 500625 |
| 15. FUSE LIST | 066145 |

- NOTES**
1. ** ALARM ONLY.
 2. ALL BREAKERS IN DISTRIBUTION PANELS TO BE EQUIPPED WITH 3/4" INSIDE DIAMETER BRASS EYE BOLTS.
 3. INTERRUPTING CAPACITY OF CIRCUIT BREAKERS SHALL BE NOT LESS THAN 20,000A AT 250V DC.
 4. INTERRUPTING CAPACITY OF ALL FUSES SHALL BE NOT LESS THAN 50,000A AT 250V DC.
 5. ALARMS FOR 250V DC BUS MCC 221 UNDERVOLTAGE & GROUND DETECTOR, SEE DWG 500790.