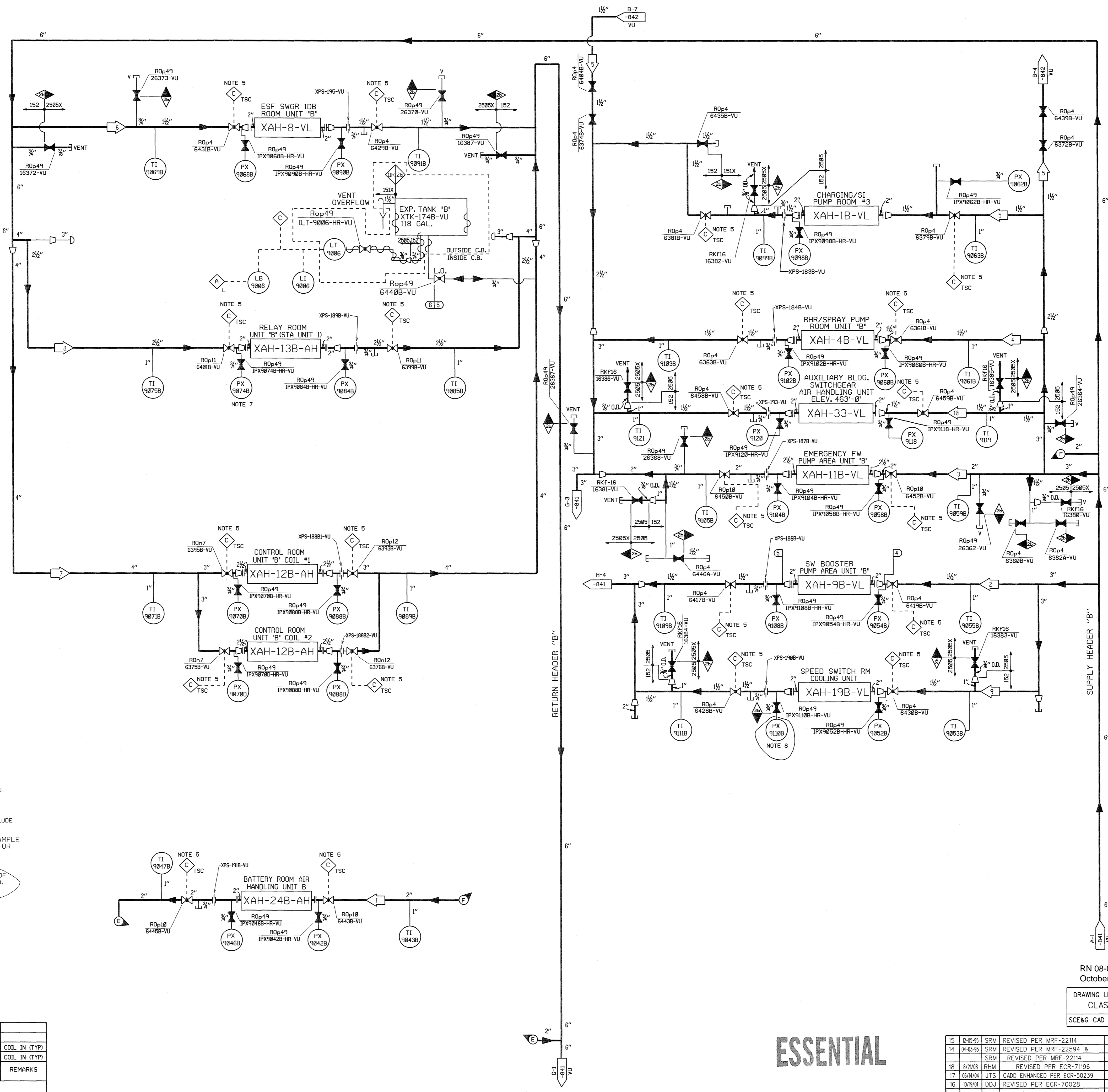


SYSTEM DATA					
ID	NORMAL		UPSET		REMARKS
	GPM	PSIG	GPM	PSIG	
1	62	96	---	---	45 JAH
2	51	96	---	---	45 JAH
3	73	93	---	---	45 JAH
4	58	103	---	---	45 JAH
5	58	99	---	---	45 JAH
6	37	88	---	---	45 JAH
7	128	76	---	---	45 JAH
8	59	72	---	---	45 JAH
9	31	67	---	---	45 JAH
10	29	77	---	---	45 JAH



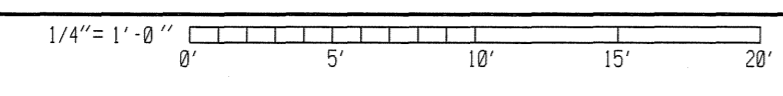
- NOTES:**
- ALL EQUIPMENT TO BE SAFETY CLASS 2b UNLESS NOTED OTHERWISE
 - ALL SAFETY CLASS PIPING TO BE IN ACCORDANCE WITH LINE SPEC 152N
 - ALL NON SAFETY CLASS PIPING TO BE IN ACCORDANCE WITH LINE SPEC 151X
 - EXCEPT WHERE NOTED OTHERWISE, ALL ALARMS & INDICATING LIGHTS ARE LOCATED ON THE HVAC CONTROL BOARD (XCP-6210-AH) IN THE MAIN CONTROL ROOM
 - OPERATOR INITIATED INPUT TO THE TSC COMPUTER
 - THE HYDROSTATIC PRESSURE LISTED ON THIS DRAWING IN THE DESIGN DATA BOX IS PER SECTION XI OF THE ASME CODE. THE VALUE IS BASED ON DEAD HEAD PRESSURE AT THE PUMP DISCHARGE. THE VALUE DOES NOT INCLUDE ELEVATION CORRECTIONS.
 - CONNECTION CONTAINS PERMANENT SAMPLE CONNECTION. REFER TO IMS-22-1619 FOR DETAILS.
 - ALL PIPING AND COMPONENTS DOWNSTREAM OF IPX ROOT VALVES ARE NON SAFETY RELATED. SEE TYPICAL DEPICTION AT IPX 9110B.

THE ASSOCIATED 307 DRAWING SHALL BE REVISED IN CONJUNCTION WITH REVISION TO THIS 302 IF THE CROSS HATCHED AREA IS AFFECTED.

THIS IS A NUCLEAR SAFETY RELATED DOCUMENT. NO DEVIATION SHALL BE INITIATED OR PERFORMED WITHOUT PRIOR DOCUMENTATION AND WRITTEN APPROVAL.

ID	PSIG	"F	PSIG	"F	DURATION	HYDRO	BY	CKD	REMARKS
6	ATM	107	---	---	---	---	---	---	5
5	123	54	---	---	---	---	DJL	---	136
4	123	45	---	---	---	---	DJL	---	136

DESIGN DATA



ESSENTIAL

15	2-05-95	SRM	REVISED PER MRF-22114	MGR	DJL
14	04-03-95	SRM	REVISED PER MRF-22594 & MRF-22114	MGR	CHR
13	08-01-95	SRM	REVISED PER MRF-22114	MGR	DJL
12	8/2/08	RHM	REVISED PER ECR-71196	MGR	LF
11	06/10/04	JTS	CADD ENHANCED PER ECR-50239	MGR	DDJ
10	10/9/01	DDJ	REVISED PER ECR-70028	MGR	DDJ

RN 08-019 October 2008		FSAR Figure 9.4-24	
DRAWING LEGIBILITY CLASS 1		SOUTH CAROLINA ELECTRIC & GAS COMPANY	
SCE&G CAD ENHANCED		VIRGIL C. SUMNER NUCLEAR STATION	
		PIPING SYSTEM FLOW DIAGRAM	
		CHILLED WATER - TO COOLING COILS	
"B"			
DESIGN ENGINEERING			
V. C. SUMNER NUCLEAR STATION - JENKINSVILLE, S.C.			
1	MADE	2	CHECKED
A.V.N.	D.V.W.	D.J.C.	
D-302-843		18	
NO.	DATE	BY	REVISION
LE			
CD			