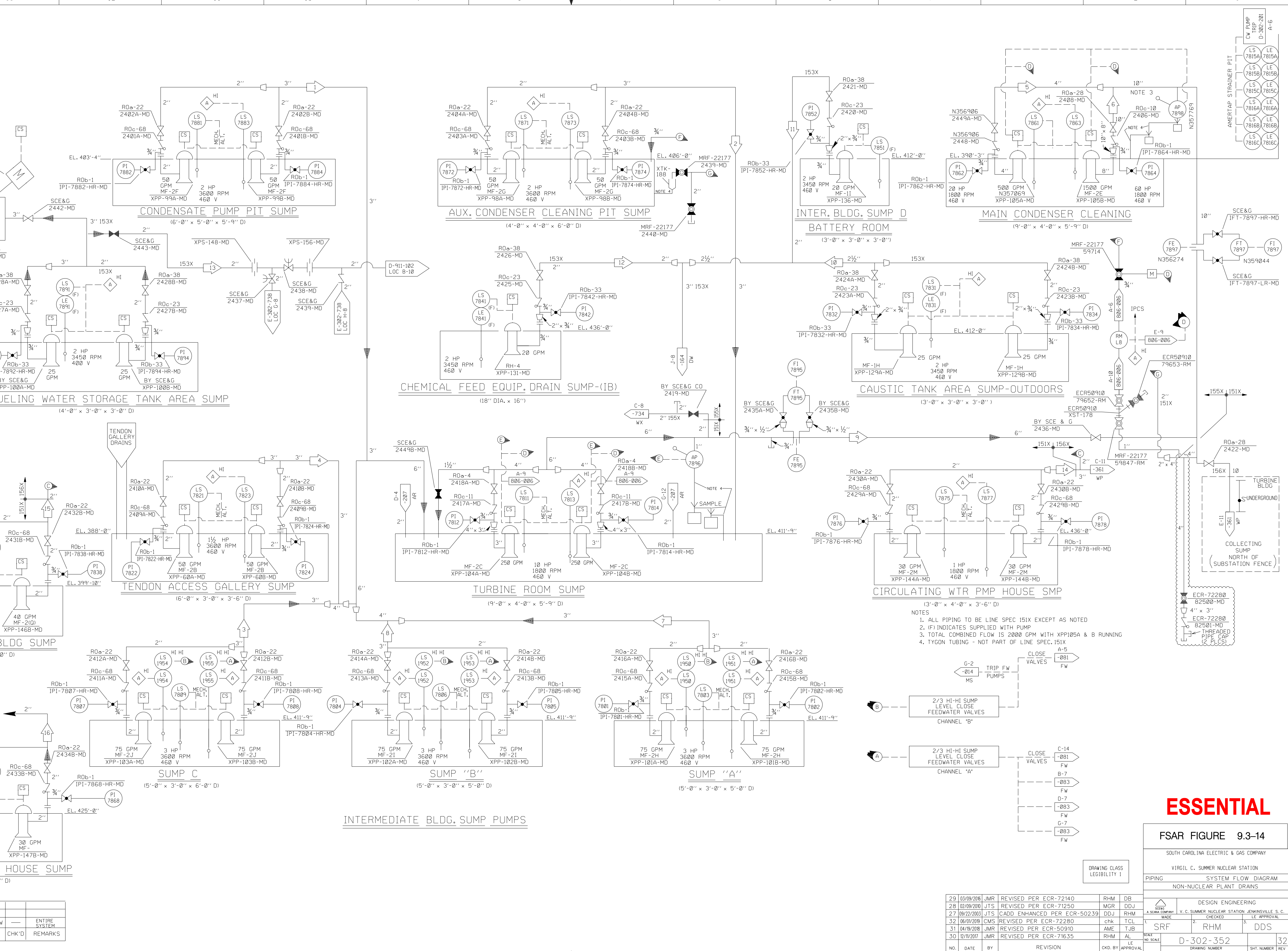


| SYSTEM DATA |      |     |     |         |
|-------------|------|-----|-----|---------|
| NO          | GPM  | FT  | F   | REMARKS |
| 1           | 50   | 70  | 120 | JJW     |
| 2           | 50   | 70  | 120 | JJW     |
| 3           | 75   | 70  | 150 | JJW     |
| 4           | 50   | 30  | 150 | JJW     |
| 5           | 500  | 100 | 120 | SCE&G   |
| 6           | 1500 | 100 | 120 | JJW     |
| 7           | 75   | 70  | 150 | JJW     |
| 8           | 75   | 70  | 150 | JJW     |
| 9           | 250  | 80  | 150 | JJW     |
| 10          | 25   | 50  | 100 | JJW     |
| 11          | 20   | 50  | 100 | JJW     |
| 12          | 20   | 50  | 100 | JJW     |
| 13          | 25   | 50  | 100 | JJW     |
| 14          | 30   | 30  | 100 | JJW     |
| 15          | 40   | 50  | 100 | JJW     |
| 16          | 30   | 30  | 100 | JJW     |

| HYDROSTATIC TEST TEMP - 60° |      |     |          |                   |
|-----------------------------|------|-----|----------|-------------------|
| ALL                         | PSIG | F   | DURATION | REMARKS           |
| ALL                         | 75   | 150 | —        | JJW ENTIRE SYSTEM |
| D                           | PSIG | F   | UPSET    | BY CHK'D          |

| DESIGN DATA |            |     |                             |          |
|-------------|------------|-----|-----------------------------|----------|
| NO.         | DATE       | BY  | REVISION                    | REVISION |
| 29          | 03/09/2008 | JMR | REVISED PER ECR-72140       | RHM DB   |
| 28          | 02/09/2008 | JTS | REVISED PER ECR-71250       | MGR DDJ  |
| 27          | 09/22/2003 | JTS | CADD ENHANCED PER ECR-50239 | RHM      |
| 32          | 06/01/2019 | CMS | REVISED PER ECR-72280       | chk TCL  |
| 31          | 04/19/2018 | JMR | REVISED PER ECR-50910       | AME TJB  |
| 30          | 12/11/2017 | JMR | REVISED PER ECR-71635       | RHM AL   |



**ESSENTIAL**

FSAR FIGURE 9.3-14

|                                       |                     |
|---------------------------------------|---------------------|
| SOUTH CAROLINA ELECTRIC & GAS COMPANY |                     |
| VIRGIL C. SUMNER NUCLEAR STATION      |                     |
| PIPING                                | SYSTEM FLOW DIAGRAM |
| NON-NUCLEAR PLANT DRAINS              |                     |
| DESIGN ENGINEERING                    |                     |
| MADE                                  | CHECKED             |
| LE APPROVAL                           | LE APPROVAL         |
| 1. SRF                                | 2. RHM              |
| 3. DDS                                |                     |
| DRAWING NUMBER: D-302-352             |                     |
| SHEET NUMBER: 32                      |                     |