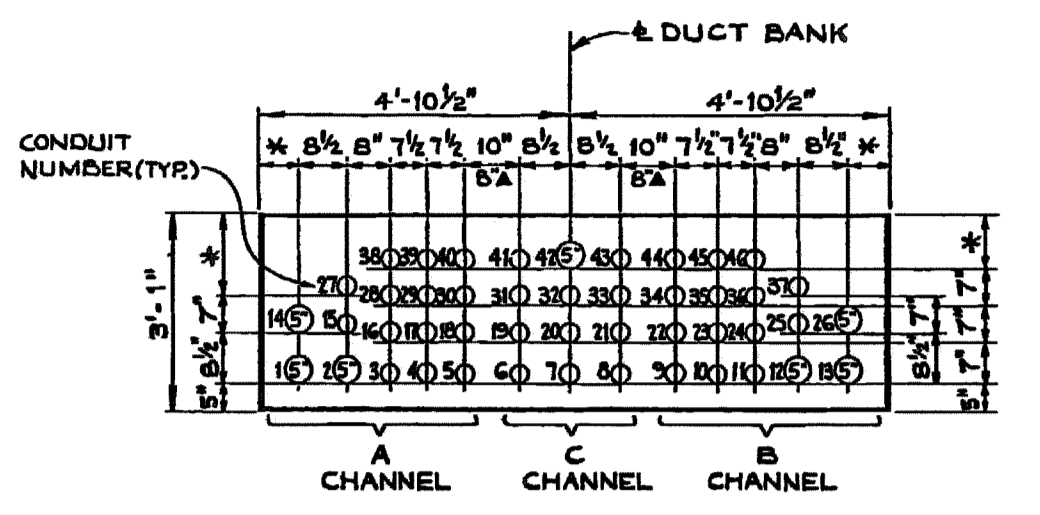


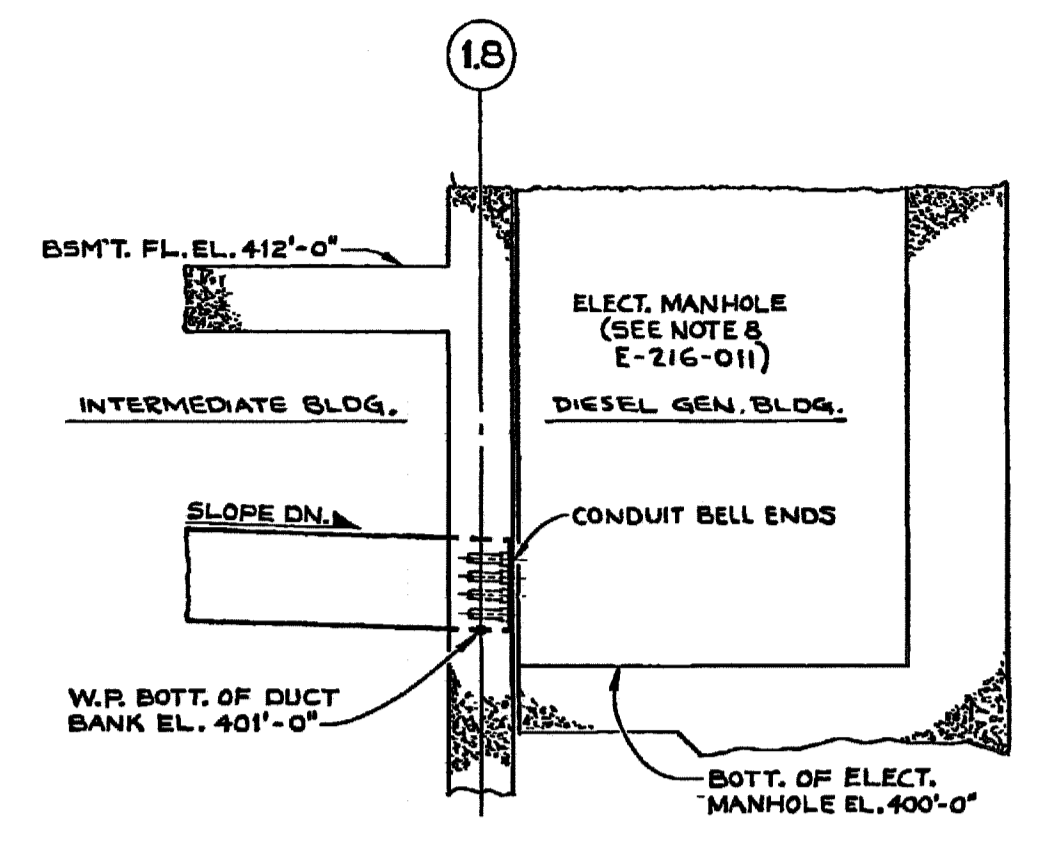
ENLARGED PLAN C
 SCALE: 1/8"=1'-0"
 (COORD. C-5; DWG. E-216-011)



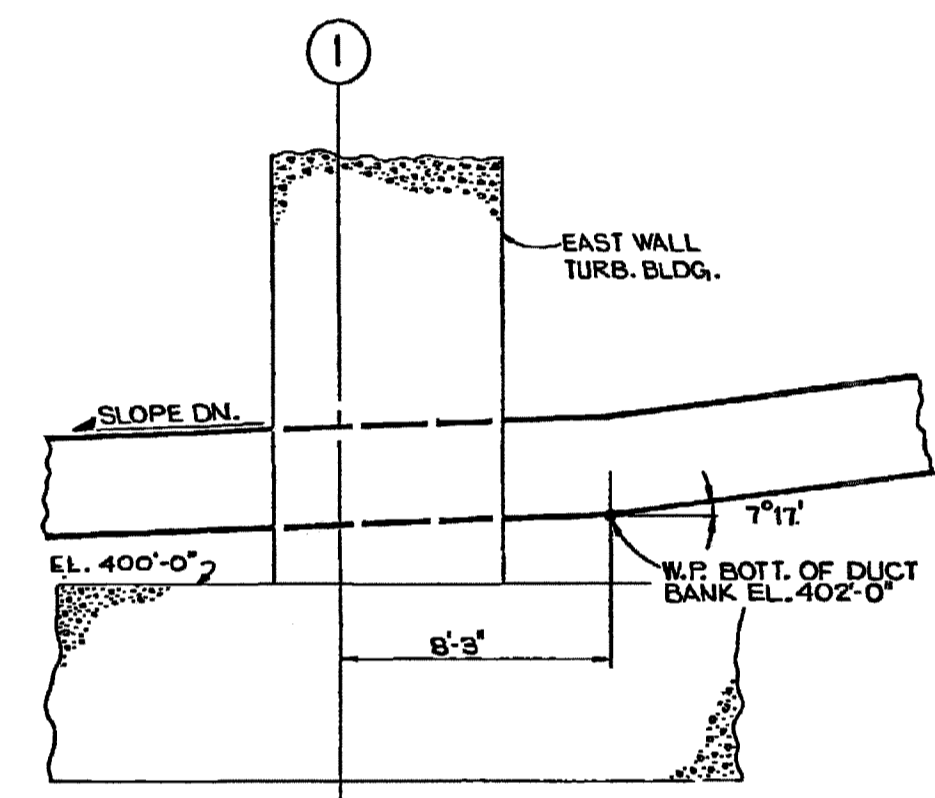
SECT. 1-1
 SCALE: NONE
 (COORDS. B-10 & E-15)
 (COORDS. B-12, D-14 & J-14; DWG. E-216-011)
 (COORDS. G-10 & C-10; DWG. E-216-013)
 (COORD. F-14 DWG. E-216-014)

CONDUIT NO.	SIZE	CONDUIT NO.	SIZE
1	5"	36	3 1/2"
2	5"	37	
3	3 1/2"	38	
4		39	
5		40	
6		41	
7		42	5"
8		43	3 1/2"
9		44	
10		45	
11		46	
12	5"	47	
13	5"	48	
14	5"	49	
15	3 1/2"	50	5"
16		51	3 1/2"
17		52	
18		53	
19		54	5"
20		55	3 1/2"
21		56	
22		57	
23		58	5"
24		59	3 1/2"
25		60	
26	5"	61	
27	3 1/2"		
28			
29			
30			
31			
32			
33			
34			
35			

CONDUIT NO.	SIZE	CONDUIT NO.	SIZE
62	2"	62	2"
63		63	
64		64	
65		65	
66		66	
67		67	
68	3"	68	3"
69		69	
70	3"	70	3"

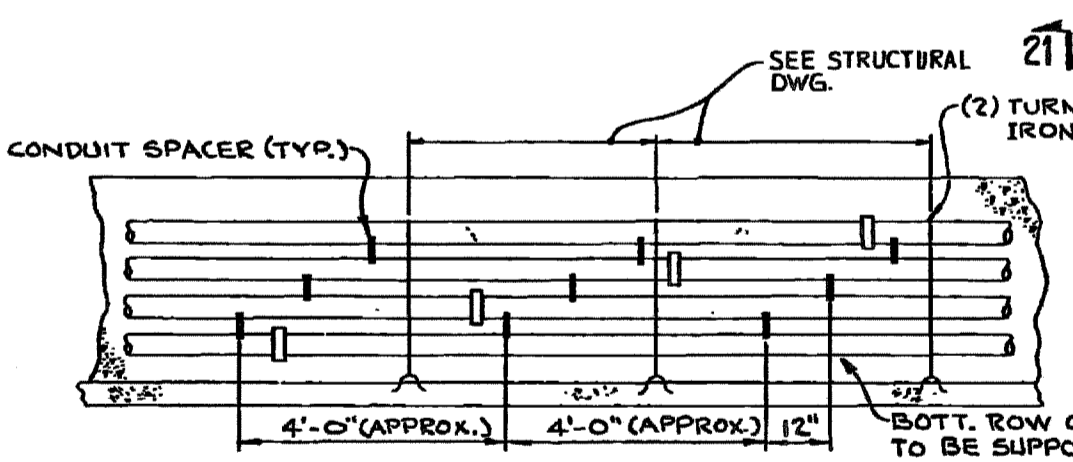


SECT. 10-10
 SCALE: 1/2"=1'-0"
 (COORDS. B-15; D-15)

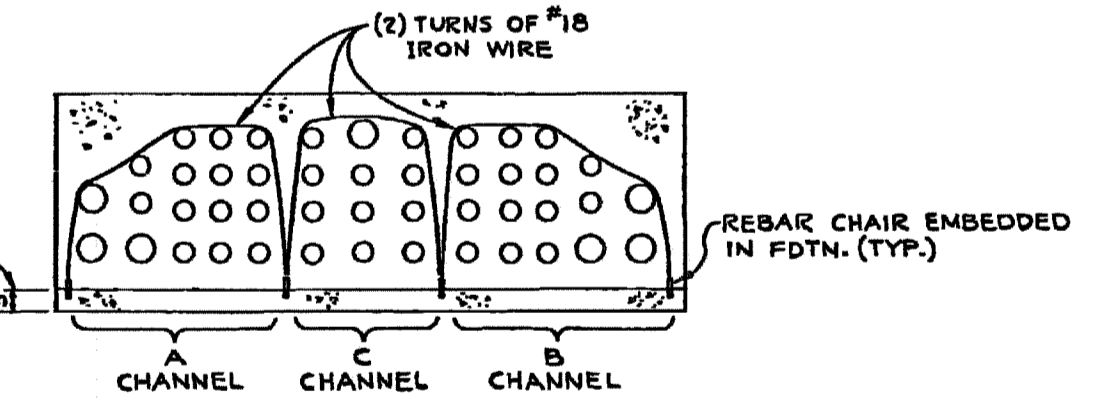


SECT. 11-11
 SCALE: 1/2"=1'-0"
 (COORD. E-14)

SEE BACKFILL DETAIL
 DWG. E-216-011



DETAIL 'E'
 TYPICAL SECTIONAL SIDE VIEW
 OF CONDUIT DUCT BANK
 ARRANGE CONDUIT SPACERS
 AS SHOWN

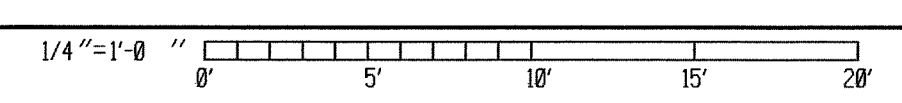


SECT. 21-21
 TYPICAL METHOD OF SECURING
 CONDUIT TO PREVENT LIFT
 NO SCALE
 (COORD. G-6)

SEE NOTES 9A & 9B
 (E-216-011)

THIS IS A NUCLEAR SAFETY RELATED DOCUMENT. NO DEVIATION SHALL BE INITIATED OR PERMITTED WITHOUT PRIOR DOCUMENTATION AND WRITTEN APPROVAL.

REFERENCES:
 E-216-011 DUCT RUNS FOR DIESEL GEN. CIRCUITS MAIN PLANT AREA - WEST END



FSAR Figure 8.3-2b

SOUTH CAROLINA ELECTRIC & GAS COMPANY

VIRGIL C. SUMNER NUCLEAR STATION

ELECTRICAL

DUCT RUNS FOR DIESEL GENERATOR CIRCUITS

MAIN PLANT AREA - EAST END

DESIGN ENGINEERING

V. C. SUMNER NUCLEAR STATION JENKINSVILLE, S.C.

1. DDJ	2. MGR	3. DDJ
--------	--------	--------

NO. DATE BY REVISION

11	10/25/07	JMR	REVISED PER ECR-70674	MGR	GC
10	9/24/08	DDJ	REVISED PER ECR-70028	MGR	DDJ

NO. DATE BY REVISION

SCALE NO. SCALE

LE

CD. BY APPROVAL

E-216-012

DRAWING NUMBER

SHT. NUMBER

11

RN 07-026
 April 2008