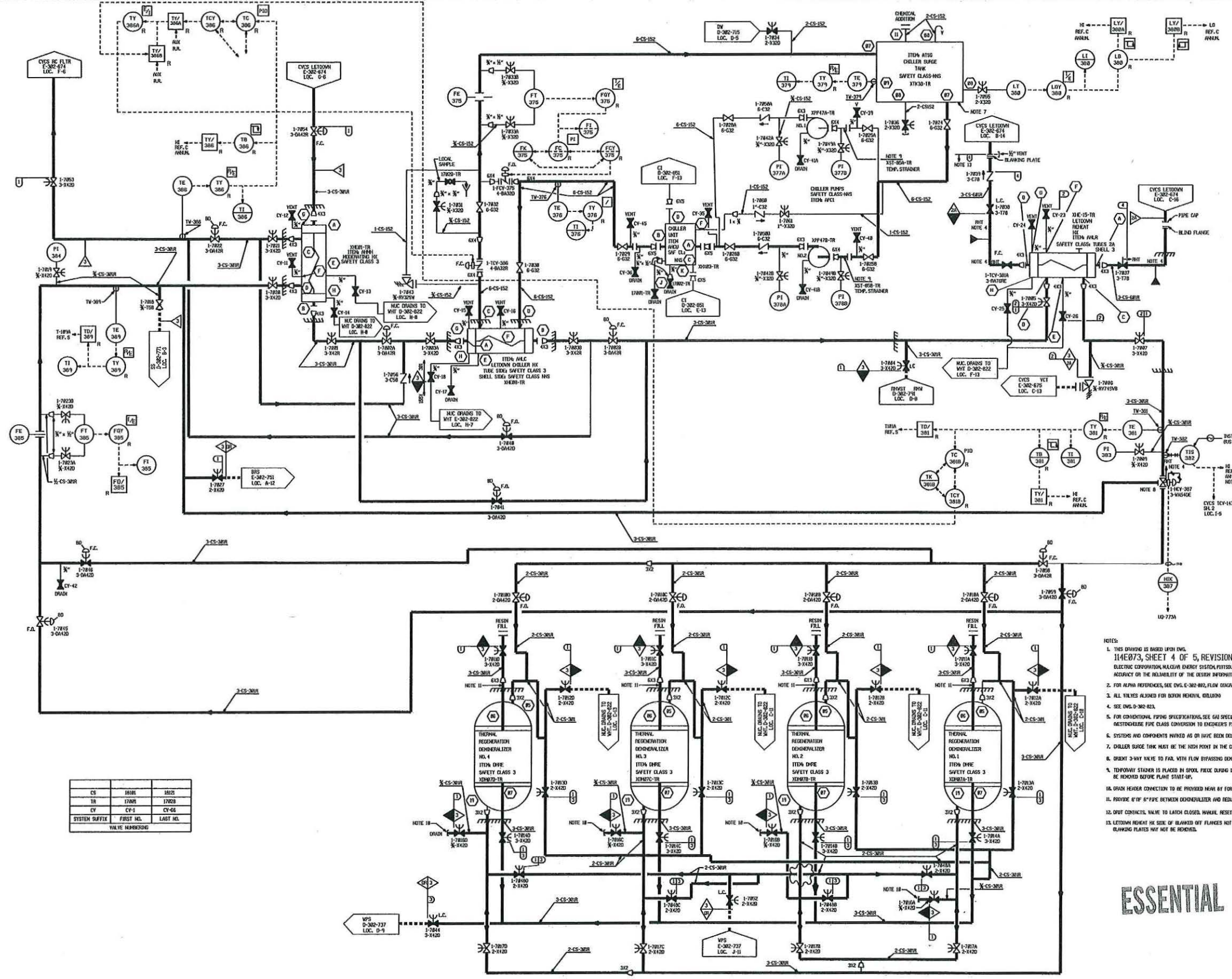


A
B
C
D
E
F
G
H
J
K



SYSTEM SUFFIX	FIRST NO.	LAST NO.
CS	1618	1612
TR	1708	1702
CV	CV-1	CV-6

VALVE MARKING

- NOTES:
- THIS DRAWING IS BASED UPON DWG. 114E073, SHEET 4 OF 5, REVISION 16 (PLEASE DRAWING) OF WESTINGHOUSE ELECTRIC CORPORATION, NUCLEAR ENERGY SYSTEM, PITTSBURGH, PA. WHO IS SOLELY RESPONSIBLE FOR THE ACCURACY OF THE RELIABILITY OF THE DESIGN INFORMATION SET FORTH IN THE BASE DRAWING.
 - FOR ALPHA REFERENCES, SEE DWG. E-302-676, FLOW DIAGRAM LEGEND.
 - ALL VALVES ARE FOR BURN REMOVAL, ISOLATION.
 - SEE DWG. D-302-824.
 - FOR CONDITIONAL PIPING SPECIFICATIONS, SEE GAS SPECIFICATION SP-321-1463-100, IN-LINE 2% WESTINGHOUSE PIPE CLASS CONVERSION TO ENGINEER'S PIPE LINE SPECIFICATION.
 - SYSTEMS AND COMPONENTS MARKED AS ON HAVE BEEN RECLASSIFIED TO QUALITY RELATED AS COVERED BY 0P-1.
 - CHILLER SURGE TANK MUST BE THE HIGH POINT IN THE CHILLER CIRCUIT.
 - GRANT 3-WAY VALVE TO FAIL WITH FLOW BYPASSING DEIONIZERS.
 - TEMPORARY STANER IS PLACED IN SPOOL PRIOR DURING INITIAL FLOODING OPERATIONS. STANER MUST BE REMOVED BEFORE PLANT START-UP.
 - DRAIN HEADER CONNECTION TO BE PROVIDED NEAR BY FOR CONNECTING HOSE FOR DRAINING BY GRAVITY.
 - PROVIDE 6" OF 6" PIPE BETWEEN DEIONIZER AND REDUCER.
 - DRIFT CONTACTS, VALVE TO LATCH CLOSED, MANUAL RESET TO BE PROVIDED.
 - LEADWIRE MOUNT ON SIDE OF BLANKED OUT FLANGES NOT HIGH TESTED. BLANKING PLATES MAY NOT BE REMOVED.

ESSENTIAL

THIS IS A NUCLEAR SAFETY RELATED DOCUMENT. NO DEVIATION SHALL BE PERMITTED OR PERFORMED WITHOUT PRIOR DOCUMENTATION AND WRITTEN APPROVAL.

HYDROTEST TEMP. 48°F (0.00U)

4	298	301	303	302	< IX	750	750
3	28	140	150	140	< IX	190	22
2	250	140	300	300	< IX	375	330
1	250	140	300	150	< IX	290	275

DESIGN DATA

PSIG	F	PSIG	F	DURATION	DESIGN HYDRO	ISI
(D)	NORMAL	LPSET				



FSAR Figure 0.3-10 SH. 4

DRIVING LEGIBILITY CLASS 1

SCHEMATIC ENHANCED

NO.	BY	REVISED PER	DATE	CHKD.	DATE
11	BJM	REVISED PER ECR-20502	10/27/03	MSR	10/27/03
10	BJM	REVISED PER ECR-20500	10/27/03	MSR	10/27/03
9	BJM	REVISED PER ECR-20475	10/27/03	MSR	10/27/03
8	BJM	REVISED PER ECR-20475	10/27/03	MSR	10/27/03
7	BJM	REVISED PER ECR-20475	10/27/03	MSR	10/27/03
6	BJM	REVISED PER ECR-20475	10/27/03	MSR	10/27/03
5	BJM	REVISED PER ECR-20475	10/27/03	MSR	10/27/03
4	BJM	REVISED PER ECR-20475	10/27/03	MSR	10/27/03
3	BJM	REVISED PER ECR-20475	10/27/03	MSR	10/27/03
2	BJM	REVISED PER ECR-20475	10/27/03	MSR	10/27/03
1	BJM	REVISED PER ECR-20475	10/27/03	MSR	10/27/03

DESIGN ENGINEER: BJM
CHECKED: MSR
DATE: 10/27/03

ACI MGR JMG

E-302-676