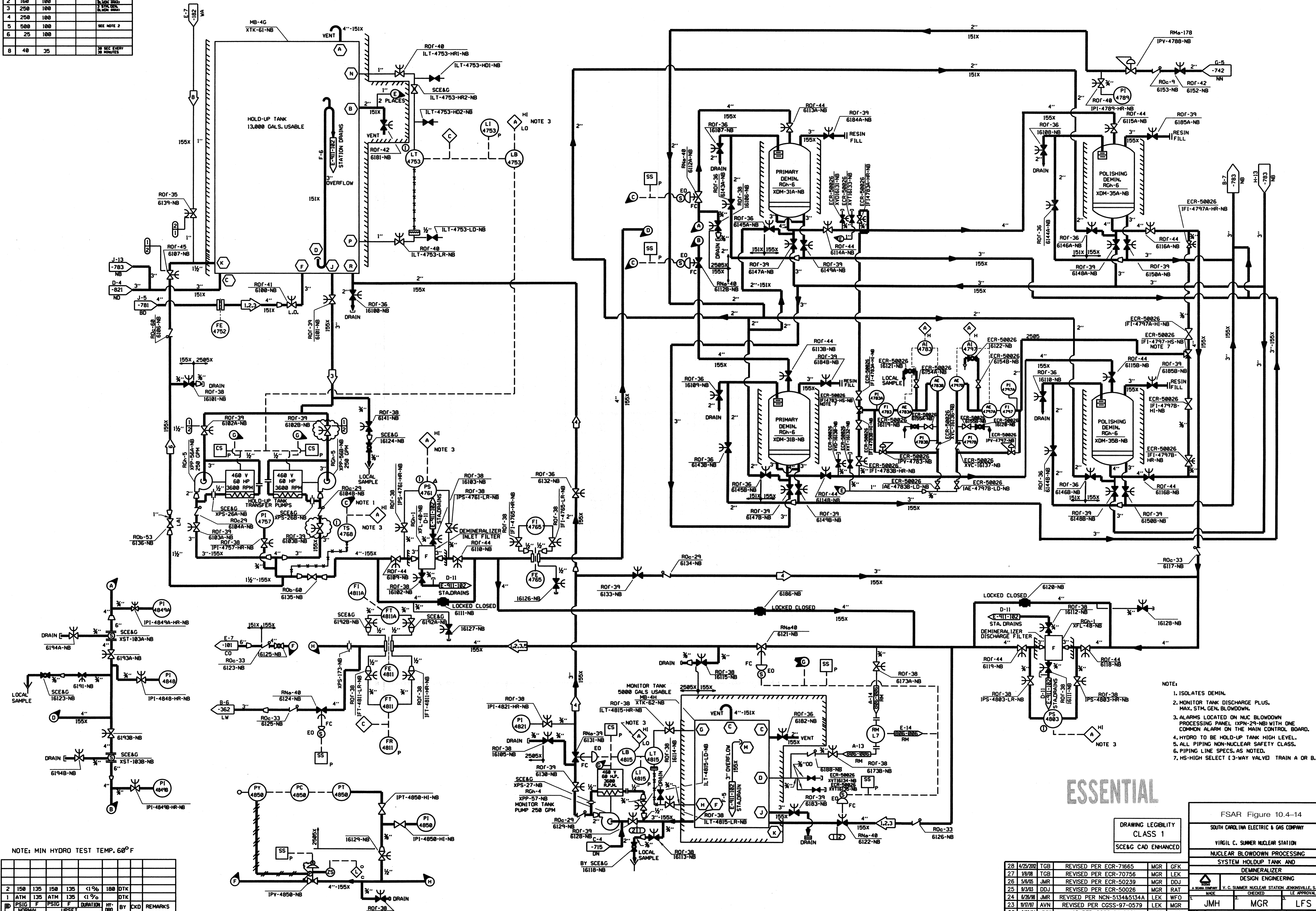


SYSTEM DATA

NO.	GPM	PSIG	ΔP	REMARKS
1	80	100		1 STA. CAL.
2	160	100		2 STA. CAL.
3	250	100		3 STA. CAL.
4	250	100		4 STA. CAL.
5	500	100		SEE NOTE 2
6	25	100		
8	40	35		30 SEC EVERY 30 MINUTES

Ⓜ NEXT LETTER



NOTE: MIN HYDRO TEST TEMP. 60°F

NO.	DATE	BY	REVISION	CHKD. BY	APPROVAL
28	4/29/2012	TGB	REVISED PER ECR-71665	MGR	GFK
27	1/8/08	TGB	REVISED PER ECR-70756	MGR	LEK
26	5/6/05	JMR	REVISED PER ECR-50239	MGR	DDJ
25	9/3/03	DDJ	REVISED PER ECR-50026	MGR	RAT
24	6/28/98	JMR	REVISED PER NCN-513485134A	LEK	WFO
23	10/17/91	AVN	REVISED PER CGSS-97-0579	LEK	MGR
22	6/20/94	JMH	AS PER CGSS-94-0921	MGR	LFS

ESSENTIAL

DRAWING LEGIBILITY CLASS 1
SCE&G CAD ENHANCED

FSAR Figure 10.4-14	
SOUTH CAROLINA ELECTRIC & GAS COMPANY	
VIRGIL C. SUMNER NUCLEAR STATION	
NUCLEAR BLOWDOWN PROCESSING	
SYSTEM HOLDUP TANK AND	
DEMINERALIZER	
DESIGN ENGINEERING	
DESIGNED BY	V. C. SUMNER, NUCLEAR STATION, ENNISVILLE, S.C.
CHECKED BY	
DATE	
NO.	
DATE	
BY	
REVISION	
CHKD. BY	
APPROVAL	

