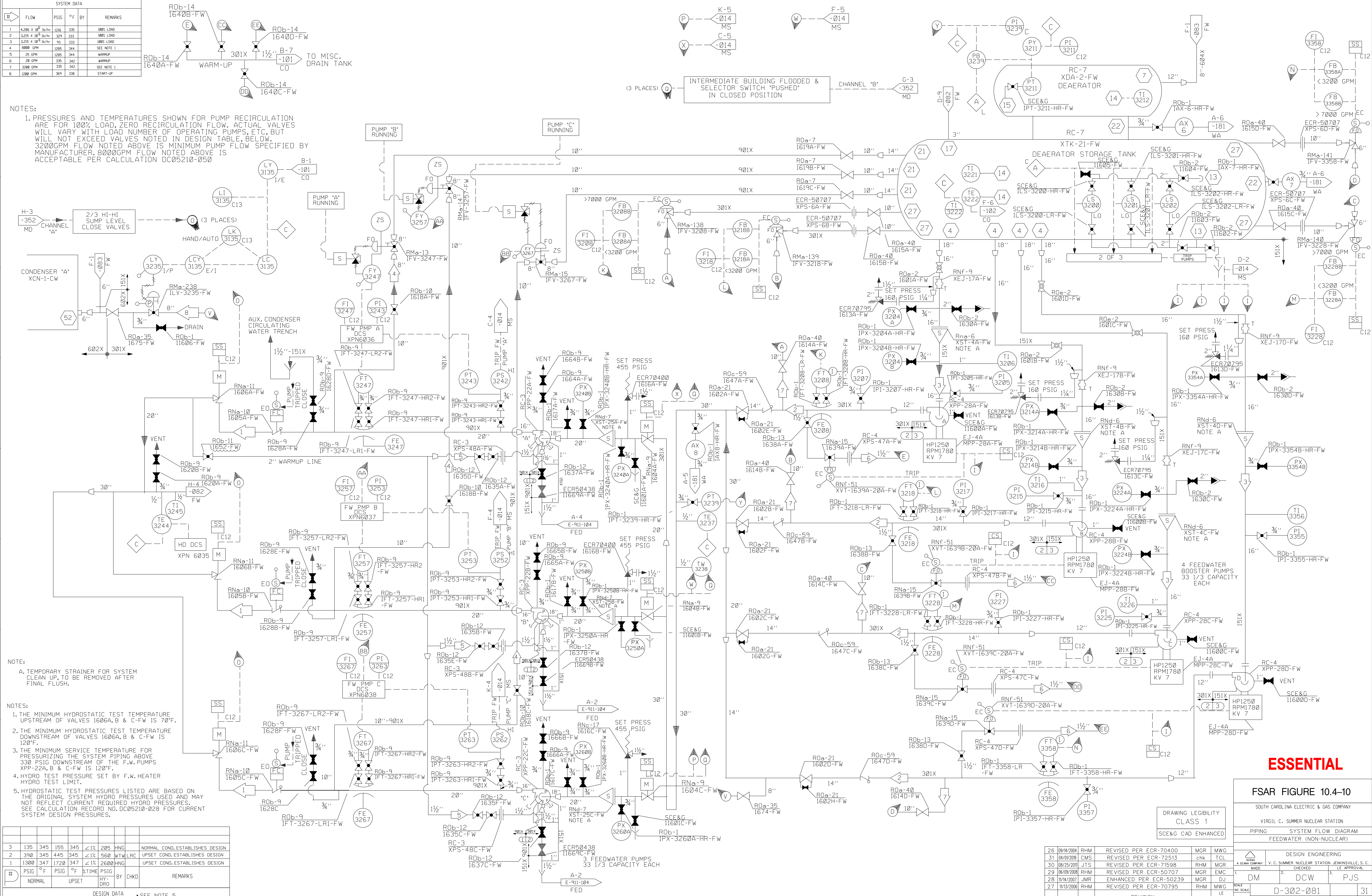


SYSTEM DATA						
#	FLOW	PSIG	°F	BY	REMARKS	
1	4,286 x 10 ⁶ lb/hr	1216	335		100% LOAD	
2	3,215 x 10 ⁶ lb/hr	329	333		100% LOAD	
3	3,215 x 10 ⁶ lb/hr	93	333		100% LOAD	
4	8000 GPM	1285	344		SEE NOTE 1	
5	25 GPM	1285	344		WARMUP	
6	20 GPM	335	342		WARMUP	
7	3200 GPM	335	342		SEE NOTE 1	
8	1200 GPM	369	338		START-UP	

NOTES:
 1. PRESSURES AND TEMPERATURES SHOWN FOR PUMP RECIRCULATION ARE FOR 100% LOAD, ZERO RECIRCULATION FLOW. ACTUAL VALUES WILL VARY WITH LOAD NUMBER OF OPERATING PUMPS, ETC. BUT WILL NOT EXCEED VALUES NOTED IN DESIGN TABLE, BELOW. 3200GPM FLOW NOTED ABOVE IS MINIMUM PUMP FLOW SPECIFIED BY MANUFACTURER. 8000GPM FLOW NOTED ABOVE IS ACCEPTABLE PER CALCULATION DC05210-050



NOTE:
 A. TEMPORARY STRAINER FOR SYSTEM CLEAN UP, TO BE REMOVED AFTER FINAL FLUSH.

- NOTES:
- THE MINIMUM HYDROSTATIC TEST TEMPERATURE UPSTREAM OF VALVES 1606A, B & C-FW IS 70°F.
 - THE MINIMUM HYDROSTATIC TEST TEMPERATURE DOWNSTREAM OF VALVES 1606A, B & C-FW IS 120°F.
 - THE MINIMUM SERVICE TEMPERATURE FOR PRESSURIZING THE SYSTEM PIPING ABOVE 330 PSIG DOWNSTREAM OF THE F.W. PUMPS XPP-22A, B & C-FW IS 120°F.
 - HYDRO TEST PRESSURE SET BY F.W. HEATER HYDRO TEST LIMIT.
 - HYDROSTATIC TEST PRESSURES LISTED ARE BASED ON THE ORIGINAL SYSTEM HYDRO PRESSURES USED AND MAY NOT REFLECT CURRENT REQUIRED HYDRO PRESSURES. SEE CALCULATION RECORD NO. DC05210-028 FOR CURRENT SYSTEM DESIGN PRESSURES.

#	PSIG	°F	PSIG	°F	%TIME	BY	CHKD	REMARKS
	NORMAL		UPSET					

DESIGN DATA • SEE NOTE 5

1/4" = 1'-0"

DRAWING LEGIBILITY CLASS 1
 SCE&G CAD ENHANCED

ESSENTIAL

FSAR FIGURE 10.4-10

SOUTH CAROLINA ELECTRIC & GAS COMPANY		
VIRGIL C. SUMNER NUCLEAR STATION		
PIPING SYSTEM FLOW DIAGRAM		
FEEDWATER (NON-NUCLEAR)		
DESIGN ENGINEERING		
1. V.C. SUMNER	2. V.C. SUMNER	3. JENKINSVILLE, S.C.
DM	DCW	PJS
DRAWING NUMBER		SHT. NUMBER
D-302-081		31

NO.	DATE	BY	REVISION	CRD.	BY	APPROVAL
26	09/14/2004	RHM	REVISED PER ECR-70400	MGR	MWG	
31	04/07/2009	CMS	REVISED PER ECR-72513	chk	TCL	
30	08/25/2010	JTS	REVISED PER ECR-71598	RHM	MGR	
29	06/09/2008	RHM	REVISED PER ECR-50707	MGR	EMC	
28	11/14/2007	JMR	ENHANCED PER ECR-50239	MGR	DJ	
27	11/15/2006	RHM	REVISED PER ECR-70795	RHM	MWG	