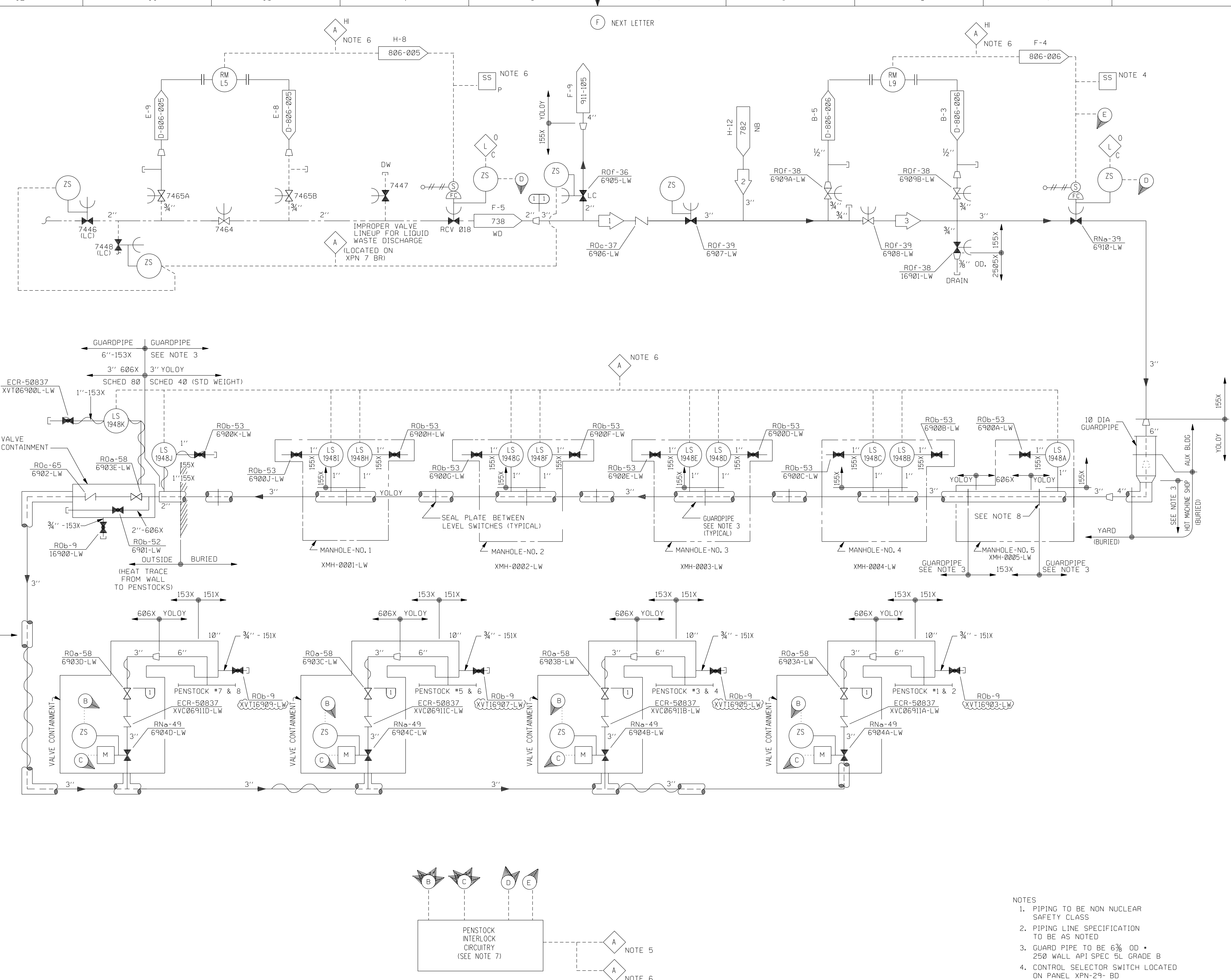


SYSTEM DATA		REMARKS	
1	100	100	
2	250	110	
3	350	110	

MIN HYDRO TEST TEMP. 40°F

NO	PSIG	F	PSIG	F	DURATION	HYDRO	BY	CHK'D	REMARKS

DESIGN DATA



- NOTES
1. PIPING TO BE NON NUCLEAR SAFETY CLASS
 2. PIPING LINE SPECIFICATION TO BE AS NOTED
 3. GUARD PIPE TO BE 6% OD • 250 WALL API SPEC 5L GRADE B
 4. CONTROL SELECTOR SWITCH LOCATED ON PANEL XPN-29- BD
 5. ANNUNCIATION AT PUMPED STORAGE PLANT WHEN 6904 VALVE IS OPEN & IT'S ASSOCIATED GENERATION UNIT IS BELOW THE SPECIFIED GENERATION LEVEL
 6. LOCATED ON PANEL XPN-7-BR
 7. REFERENCE GIBBS & HILL DIAGRAM M-3CA (GAI DWG 1MS-09-186-SH, 1.)
 8. HOLES DRILLED INTO SEAL PLATE TO ALLOW LEAKAGE FROM PROCESS PIPE IN MANHOLE 5 TO ACTIVATE LEVEL SWITCH.

ESSENTIAL

FSAR Figure 10.4-17

SOUTH CAROLINA ELECTRIC & GAS COMPANY

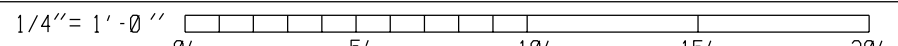
VIRGIL C. SUMMER NUCLEAR STATION

PIPING SYSTEM FLOW DIAGRAM

LIQUID EFFLUENTS FROM NUCLEAR PLANT TO FAIRFIELD PENSTOCK DESIGN ENGINEERING

1. SRM	2. RHM	3. GAR
--------	--------	--------

D-302-362



NO.	DATE	BY	REVISION	CHKD.	APPROVAL
13	03/27/2008	CMS	REVISED PER ECR-50837/50837A	chk	WBT
12	12/10/2008	JMR	REVISED PER ECR-72207	AME	JR
17	12/18/2009	CMS	REVISED PER ECR-72614	chk	AJL
16	10/02/2009	CMS	REVISED PER ECR-50837/50837D	chk	WBT
15	09/19/2009	CMS	REVISED PER ECR-50837B/50837C	chk	WBT
14	09/13/2009	CMS	REVISED PER ECR-50837B	chk	WBT