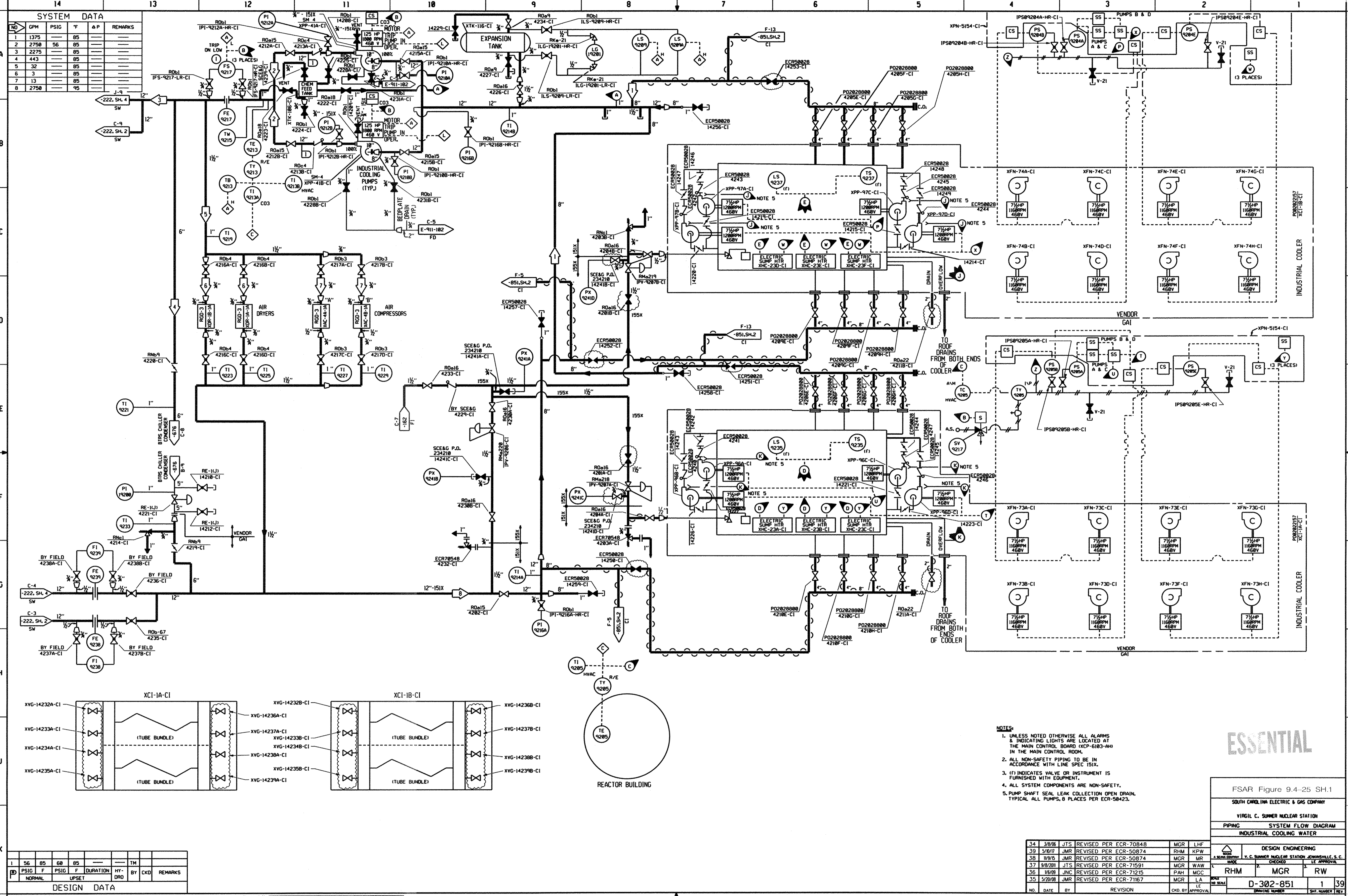


NO	GPM	PSIG	F	Δ P	REMARKS
1	1375	85			
2	2750	56	85		
3	2275	85			
4	443	85			
5	32	85			
6	3	85			
7	13	85			
8	2750	95			



I	56	85	60	85	TH	REMARKS
PSIG	F	PSIG	F	DURATION	HY-DRO	BY CKD
					UPSET	

DESIGN DATA



- NOTES:**
- UNLESS NOTED OTHERWISE ALL ALARMS & INDICATING LIGHTS ARE LOCATED AT THE MAIN CONTROL BOARD (XCP-6183-AH) IN THE MAIN CONTROL ROOM.
 - ALL NON-SAFETY PIPING TO BE IN ACCORDANCE WITH LINE SPEC IS1X.
 - (F) INDICATES VALVE OR INSTRUMENT IS FURNISHED WITH EQUIPMENT.
 - ALL SYSTEM COMPONENTS ARE NON-SAFETY.
 - PUMP SHAFT SEAL LEAK COLLECTION OPEN DRAIN. TYPICAL ALL PUMPS, 8 PLACES PER ECR-50423.

ESSENTIAL

FSAR Figure 9.4-25 SH.1
 SOUTH CAROLINA ELECTRIC & GAS COMPANY
 VIRGIL C. SUMNER NUCLEAR STATION
 PIPING SYSTEM FLOW DIAGRAM
 INDUSTRIAL COOLING WATER

NO.	DATE	BY	REVISION	CHKD.	APPROVAL
34	3/8/06	JTS	REVISED PER ECR-70848	MGR	LHF
39	5/8/07	JMR	REVISED PER ECR-50874	RHM	KPW
38	11/9/05	JMR	REVISED PER ECR-50874	MGR	MR
37	9/8/2001	JTS	REVISED PER ECR-71591	MGR	WAW
36	1/6/09	JNC	REVISED PER ECR-71215	PAH	MGC
35	5/20/08	JMR	REVISED PER ECR-71167	MGR	LA

DESIGN ENGINEERING
 V. C. SUMNER NUCLEAR STATION, CHARLOTTE, S.C.
 RHM MGR RW
 D-302-851 1 39