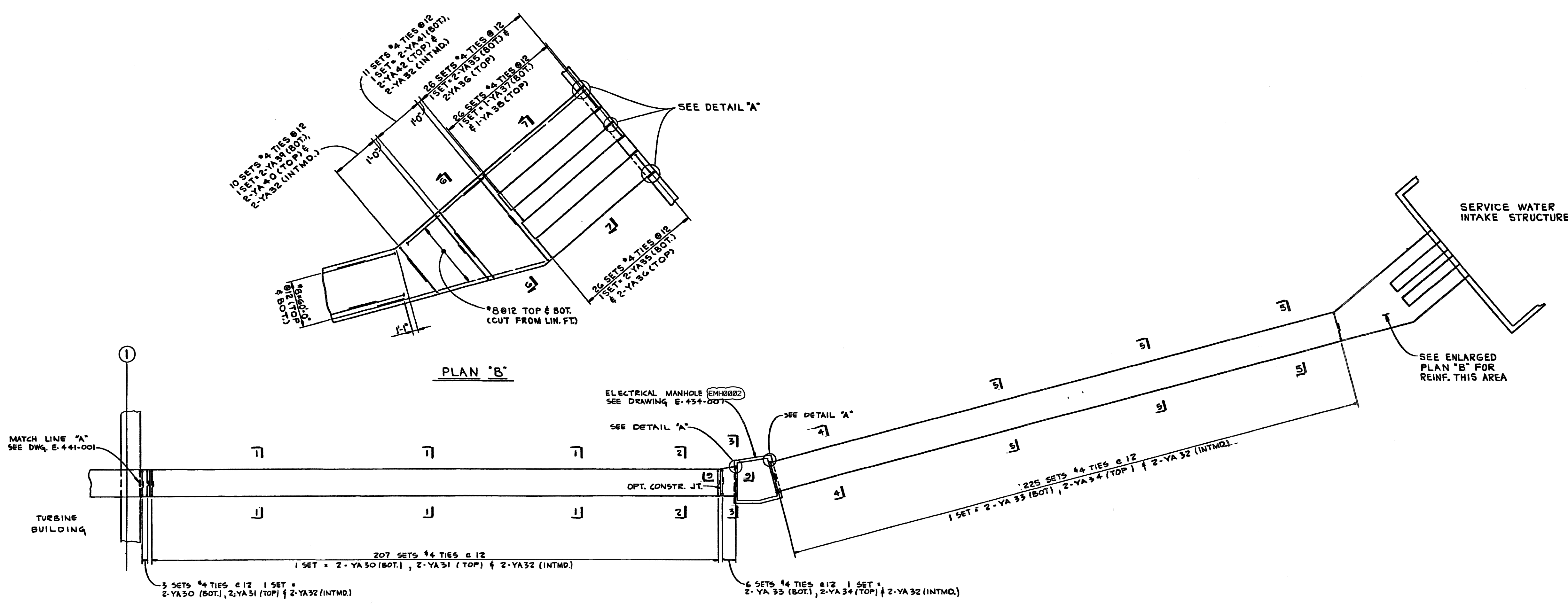
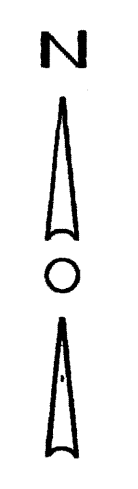


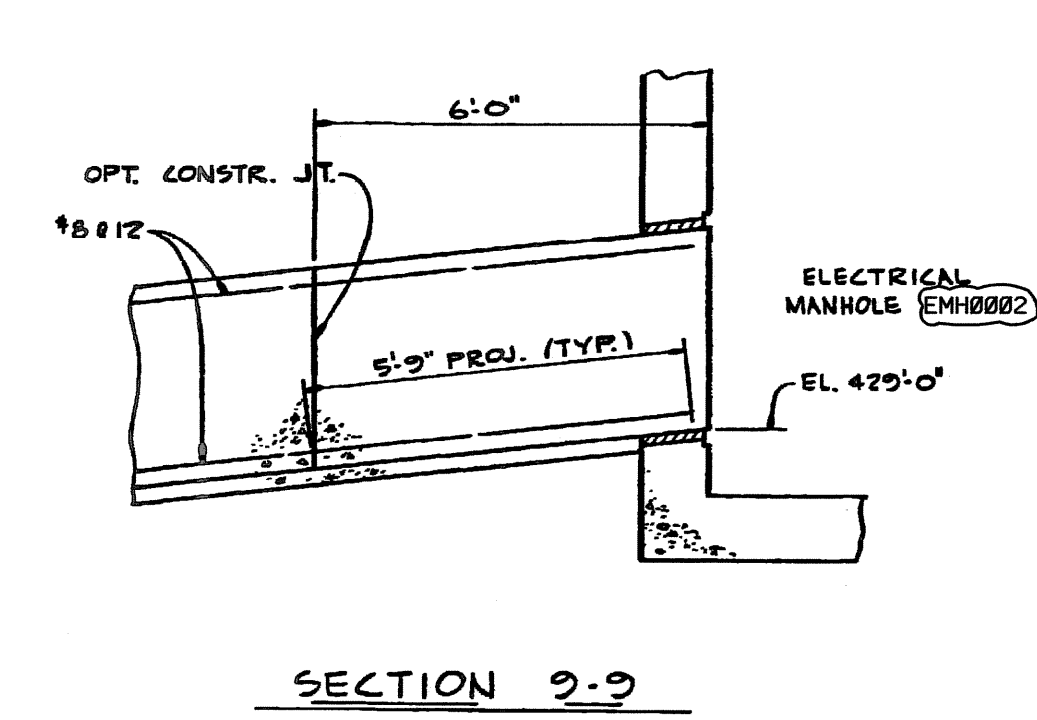
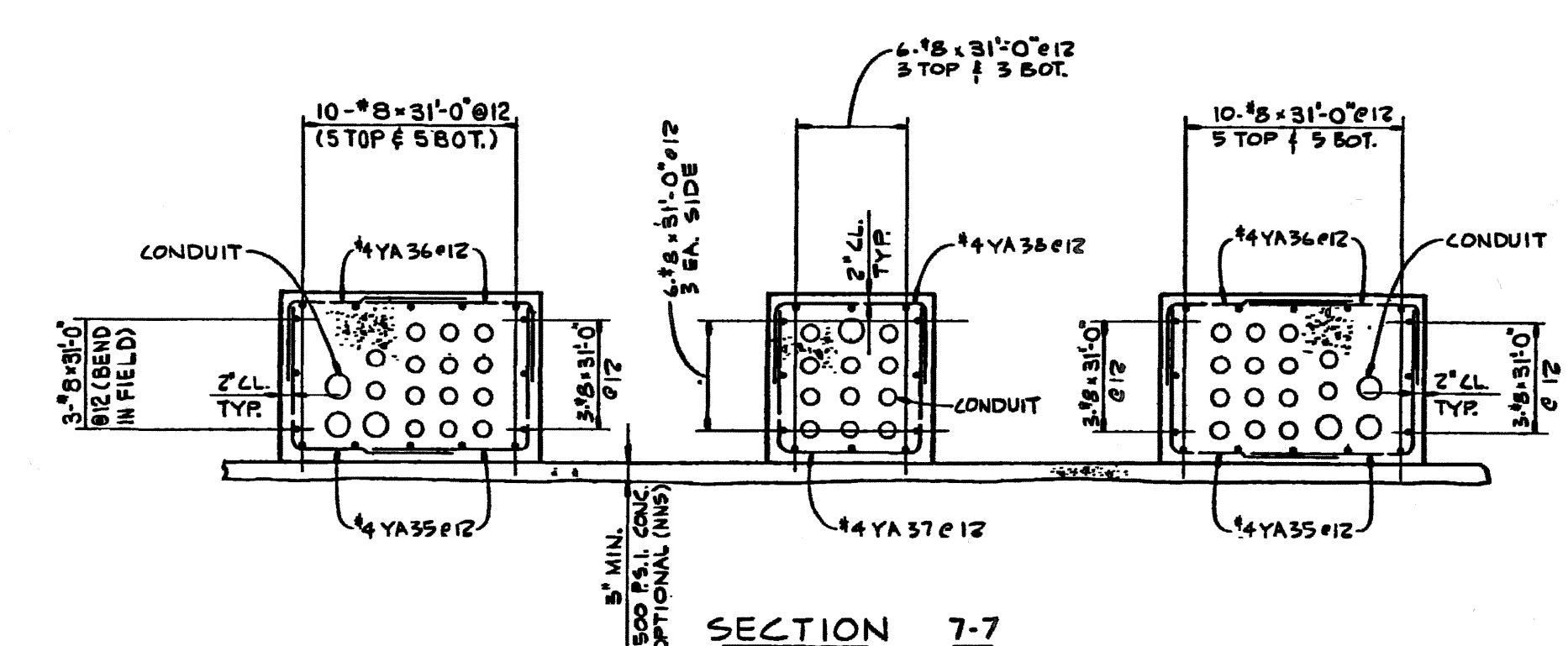
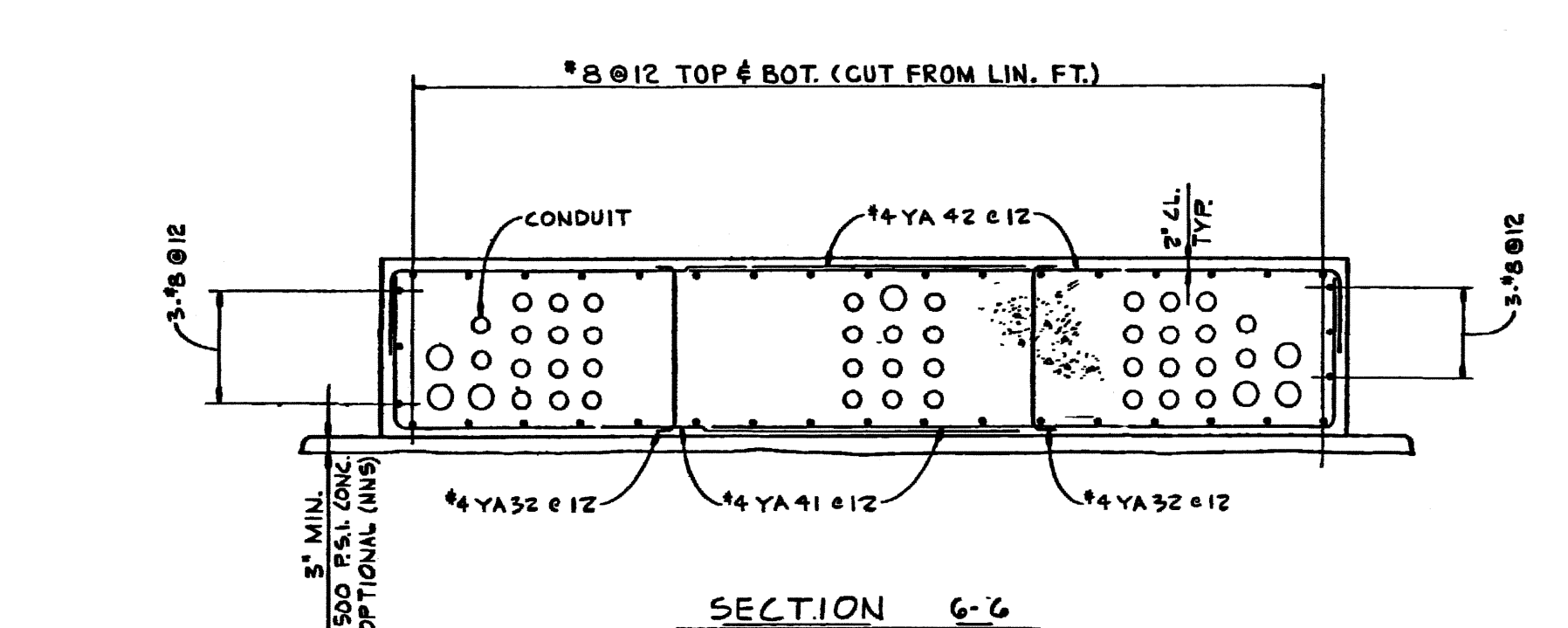
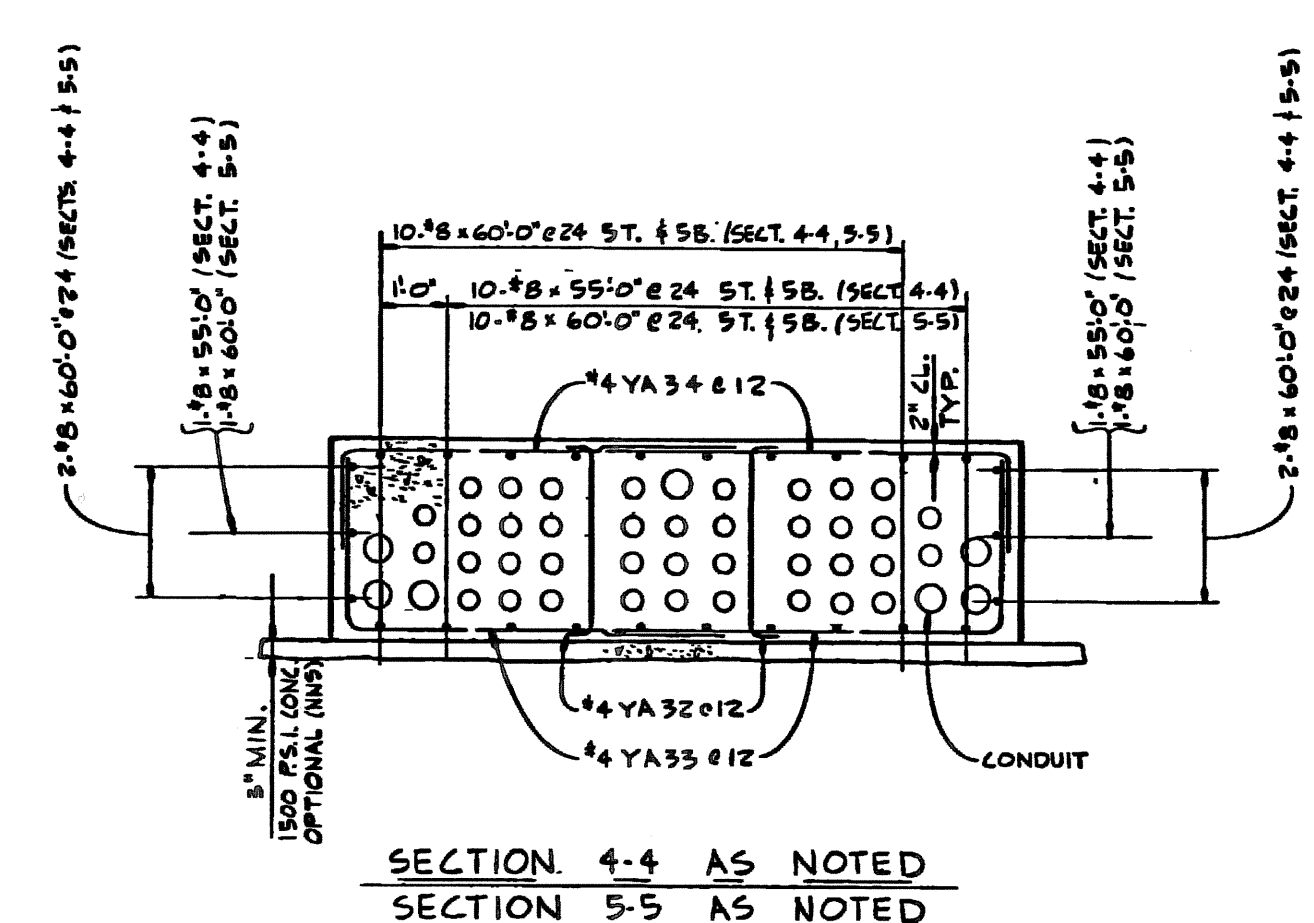
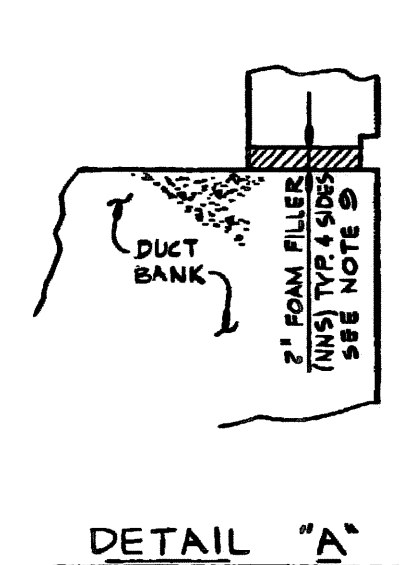
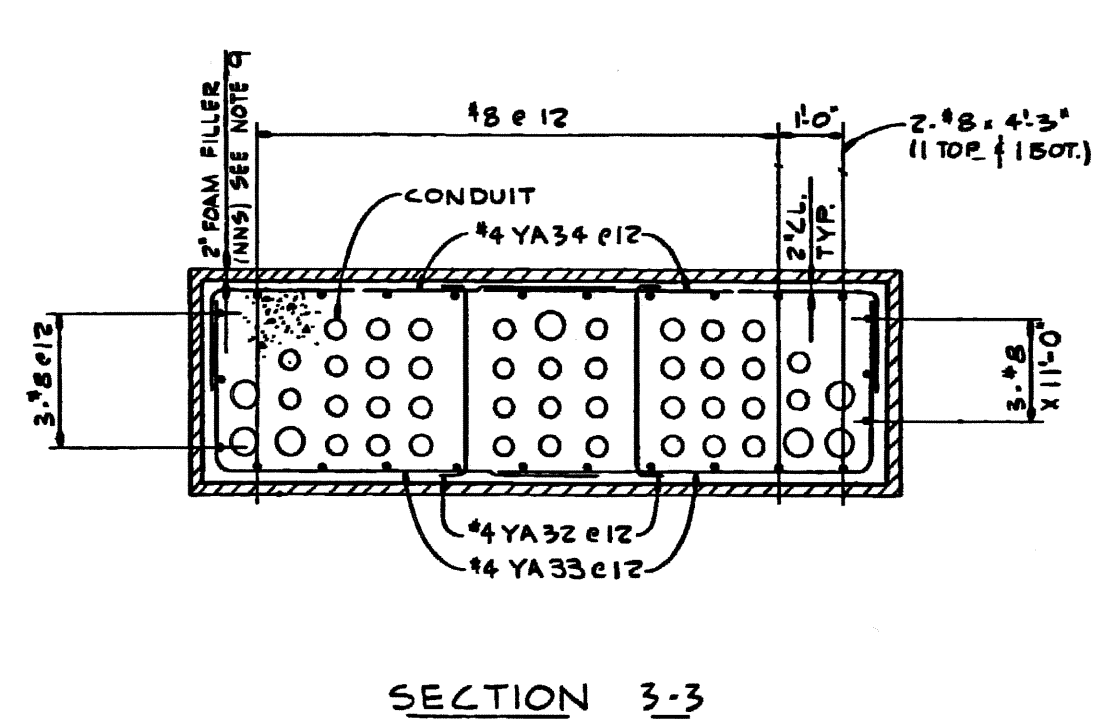
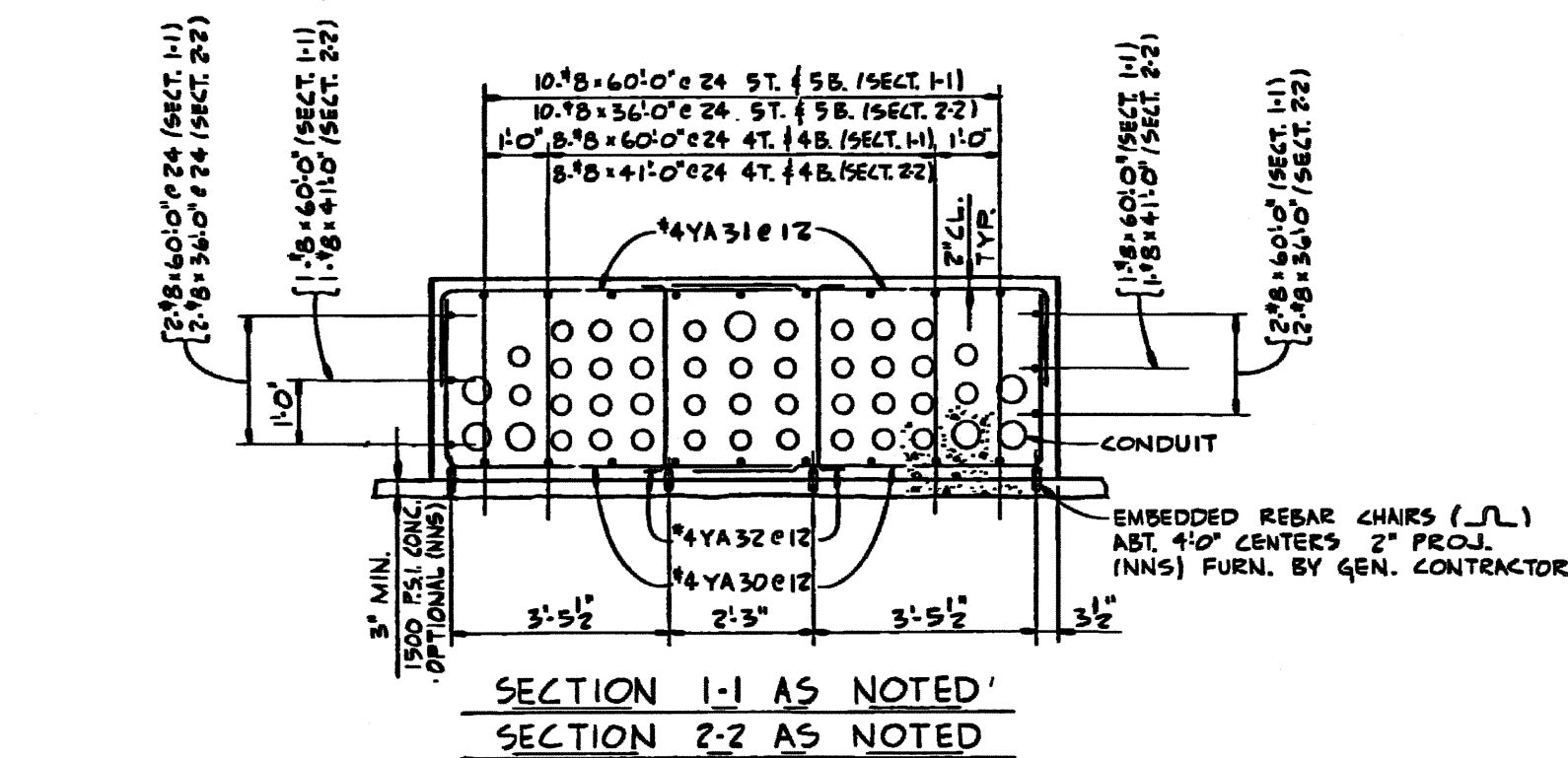
A
B
C
D
E
F
G
H
J
K



- NOTES:-
1. THE CONCRETE WORK ON THIS DRAWING IS NUCLEAR SAFETY CLASS (NSC). FOR SAFETY CLASS DESIGNATIONS OF EMBEDDED ITEMS SEE REFERENCED DRAWINGS. FOR ITEMS WHICH ARE NON-NUCLEAR SAFETY (NNS), SPECIFICATION 701-441-00 IS NOT APPLICABLE.
 2. QUALITY ASSURANCE PROGRAM REQUIREMENTS QA-1. SEE GAI SPECIFICATION QUALITY ASSURANCE PROGRAM REQUIREMENTS SP-701-441-00.
 3. STRUCTURAL CONCRETE TO BE IN ACCORDANCE WITH GAI SPECIFICATION, STRUCTURAL CONCRETE SP-201-441-00.
 4. STRUCTURAL CONCRETE TO HAVE A MINIMUM COMPRESSIVE STRENGTH OF 3000 PSI IN 28 DAYS.
 5. PLACING OF REINFORCING STEEL TO BE IN ACCORDANCE WITH GAI SPECIFICATION PLACING OF REINFORCING STEEL SP-302-441-00.
 6. FABRICATION OF REINFORCING BARS TO BE IN ACCORDANCE WITH GAI SPECIFICATION FABRICATION AND DELIVERY OF REINFORCING STEEL SP-504-441-00.
 7. THE MINIMUM LAP SPICE FOR ALL REINFORCING BARS TO BE 6'-3" FOR #6 AND 1'-4" FOR #4.
 8. THIS DRAWING TO BE WORKED IN CONJUNCTION WITH ELECTRICAL DRAWINGS E-216-012 AND E-216-014.
 9. FOAM FILLER TO BE "SERVICISED CLOSED CELL PLASTIC FOAM FILLER" BY GRACE CONSTRUCTION MATERIALS COMPANY OR EQUAL.
 10. CONSTRUCTION JOINTS MAY BE LOCATED BY THE FIELD AS REQUIRED.

- REFERENCES:-
- E-434-007 MISCELLANEOUS OUTDOOR STRUCTURES - ELECTRICAL MANHOLE (EMH0002) - REINFORCING DETAILS
 - E-441-001 ELECTRICAL DUCT BANKS - CONTROL COMPLEX, INTERMEDIATE BUILDING AND TURBINE BUILDING
 - E-216-012 ELECTRICAL - DUCT RUNS FOR DIESEL GENERATOR CIRCUITS - MAIN PLANT AREA EAST END
 - E-216-014 ELECTRICAL - DUCT RUNS FOR DIESEL GENERATOR CIRCUITS TO SERVICE WATER INTAKE STRUCTURE
 - S-424-875 REINFORCEMENT LIST
 - S-425-192 REINFORCEMENT LIST

PLAN - ELECTRICAL DUCT BANK
 FOR LOCATION OF DUCT BANK SEE DWGS. E-216-012 & E-216-014



THIS IS A
 NUCLEAR SAFETY RELATED
 DOCUMENT. NO DEVIATION SHALL BE
 INITIATED OR PERFORMED WITHOUT PRIOR
 DOCUMENTATION AND WRITTEN APPROVAL

FSAR Figure 8.3-2e			
SOUTH CAROLINA ELECTRIC & GAS COMPANY			
VIRGIL C. SUMNER NUCLEAR STATION			
MISCELLANEOUS OUTDOOR STRUCTURES			
YARD DUCT RUN - TURBINE BUILDING			
TO SERVICE WATER INTAKE STRUCTURE			
DESIGN ENGINEERING			
A. SCHEIDT COMPANY V. C. SUMNER NUCLEAR STATION JENKINSVILLE, S.C.			
1.	2.	3.	4.
DDJ	MGR	DDJ	
E-434-006			
DRAWING NUMBER		SHEET NUMBER	

NO.	DATE	BY	REVISION	CHK. BY	APPROVAL
4	11/5/07	JMR	REVISED PER ECR-70674	MGR	GC
3	9/26/07	DDJ	REVISED PER ECR-70028	MGR	DDJ

