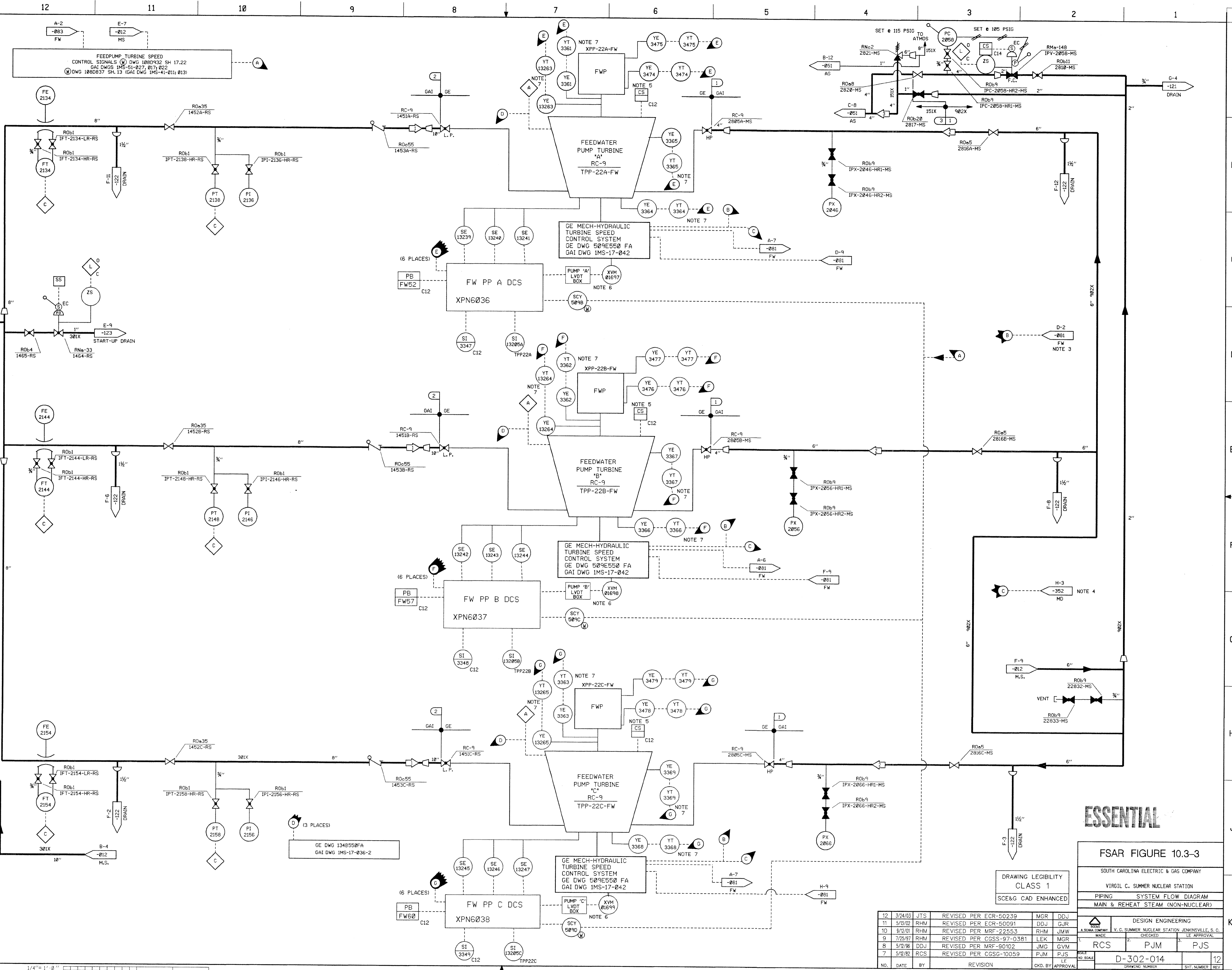


SYSTEM DATA				
LB/HR	PSIG	*F	REMARKS	
1 64,800	196	523	100% LOAD	
1 66,141	185	504	RUNDOWN (EMERG)	
2 40,989	895	538	RUNDOWN (EMERG)	
3 22,400	100	335	WHEN REQ'D	

MS	22832	22833
RS	1451	1465
MS	2801	2899
SYSTEM SUFFIX	FIRST NO.	LAST NO.
VALVE NUMBERING		

- NOTES:
- DOUBLE ROOT VALVES SHALL BE USED ON MAIN STEAM SYSTEM.
 - NO BACKING RINGS SHALL BE USED ON STEAM PIPING.
 - LOW DEAERATOR LEVEL TRIP.
 - INTMD. BLDG. SUMP TRIP.
 - TRIP/RESET FOR STOP VALVES.
 - PILOT VALVE ASSEMBLY.
 - LOCATED IN ENCLOSURE MOUNTED ON PUMP SKID:
- TPP22A - XPN5305
 TPP22B - XPN5306
 TPP22C - XPN5307

HYDROSTATIC TEST TEMP - 60°F								
3	100	390	115	375	< 1%	150	EJA	(N)
2	270	600*	-	-	-	-	GE	(N)
1	1185	600*	1284	600*	< 1%	1780	EJA	(N)
PSIG F	PSIG F	DURATION	HYD	BY	CHK	REMARKS		
NORMAL	DESIGN							



1/4" = 1'-0" 0" 5" 10" 15" 20"



FSAR FIGURE 10.3-3		
SOUTH CAROLINA ELECTRIC & GAS COMPANY		
VIRGIL C. SUMNER NUCLEAR STATION		
PIPING SYSTEM FLOW DIAGRAM		
MAIN & REHEAT STEAM (NON-NUCLEAR)		
DESIGN ENGINEERING		
V.C. SUMNER NUCLEAR STATION, JENKINSVILLE, S.C.		
1. MAKE	2. CHECKED	3. LE APPROVAL
RCS	PJM	PJS
NO. DATE BY	REVISION	NO. DATE BY
DRAWING NUMBER: D-302-014		12

302014_0001.m Printed by dj14998 Tuesday April 29 2003 02:28:11 PM EDT