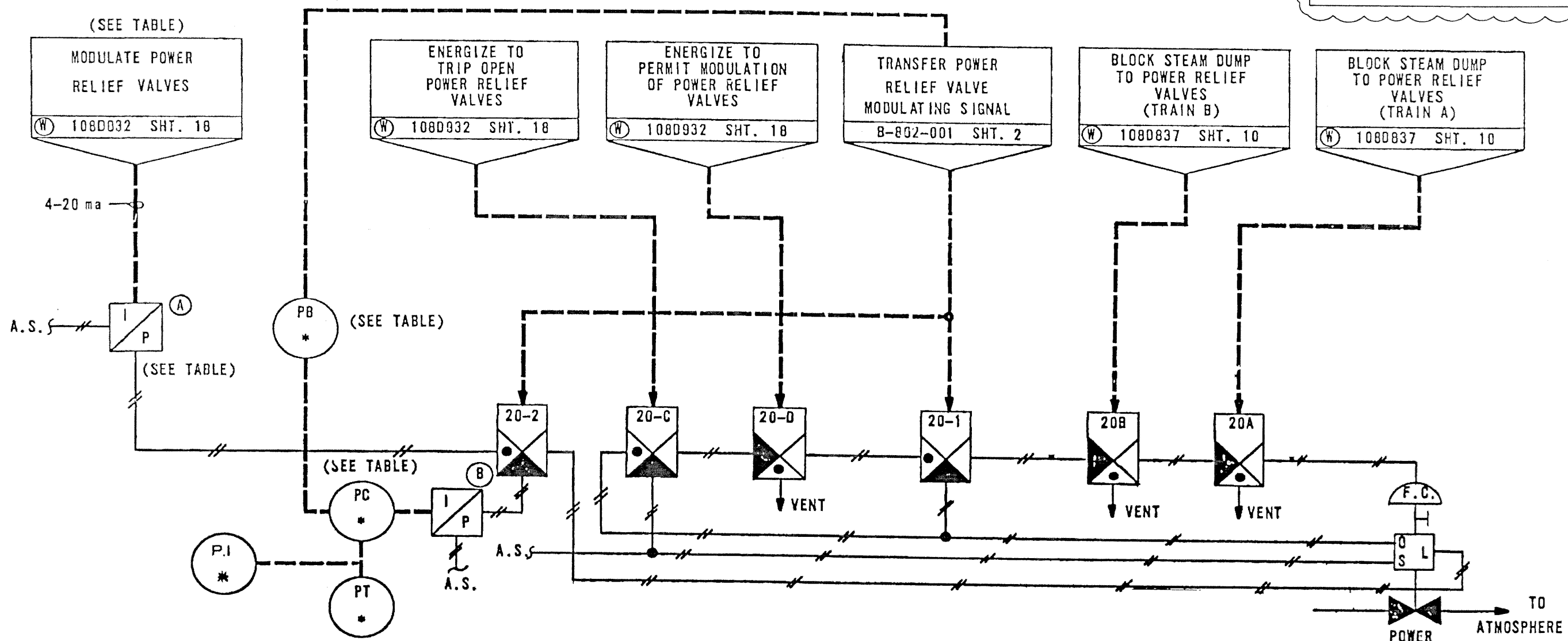


REFERENCES:

- D-302-011 FLUID SYSTEM DIAGRAM
- B-802-001 FUNCTIONAL DIAGRAMS
- W1080932 (W) PROCESS CONTROL BLOCK DIAGRAMS, SHEET 18
- W1080837 (W) FUNCTIONAL DIAGRAMS, SHEET 10

REV 6				REVISOR DDJ				REVISION ECR-70028				DATE 9/27/01					
BY DDJ				CHECKED MGR				LE APPROVAL DDJ				DATE 1/7/77					
SOUTH CAROLINA ELECTRIC & GAS COMPANY								MADE MFP		CHKD DJM		DRAWING NUMBER 04 4461 SS-808-011		SHT. NO.		REV 6	
VIRGIL C. SUMMER NUCLEAR STATION UNIT #1								I & C		LOOP DIAGRAM		DATE 1/7/77		ENG INTRF 1 N/A 2 N/A		DESIGN ENGINEERING V. C. SUMMER NUCLEAR STATION JENKINSVILLE, S. C.	
MAIN STEAM SYSTEM								SCALE NO SCALE		W.O.		ENG.		ENGINEER APPROVAL		DEPT DATE	
STEAM DUMP/TURBINE BYPASS (MS)																	

FSAR Figure 10.4-3



VALVE	PT	PC	PB	MODULATING SIGNAL	I/P CONV. (A)	I/P CONV. (B)	PI (MCB)
IPV-2000-MS	PT-2000	PC-2000	PB-2000B	TY-408R1	ITY-2000-MS	IPY-2000-MS	IPI-2000
IPV-2010-MS	PT-2010	PC-2010	PB-2010B	TY-408R1	ITY-2010-MS	IPY-2010-MS	IPI-2010
IPV-2020-MS	PT-2020	PC-2020	PB-2020B	TY-408R2	ITY-2020-MS	IPY-2020-MS	IPI-2020

- NOTES:
1. SOLENOIDS SHOWN DE-ENERGIZED.
 2. ENERGIZING 20-1 BYPASSES 20-C AND 20-D.
 3. ENERGIZING 20-2 ALLOWS MODULATION ON PRESSURE CONTROL.