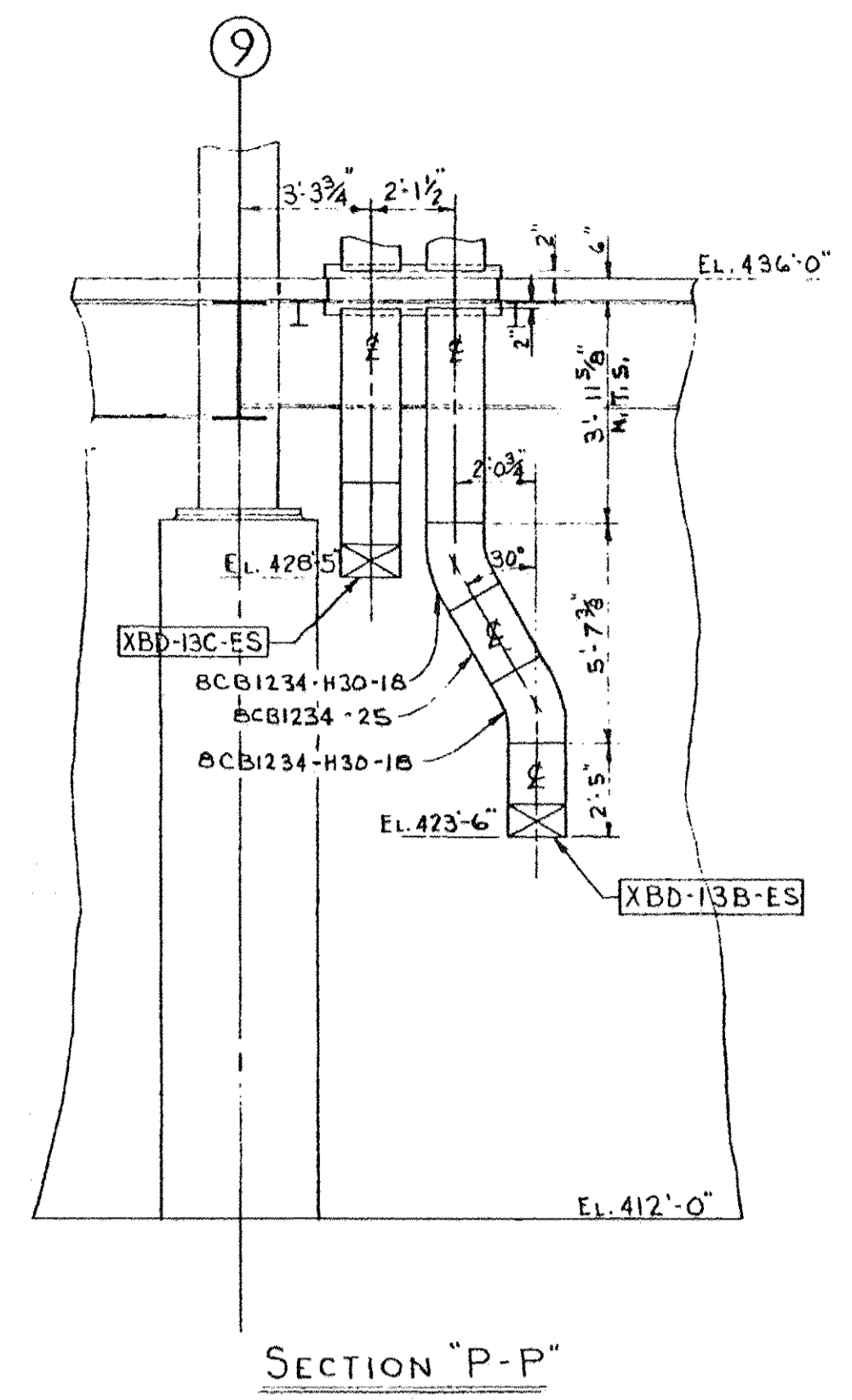
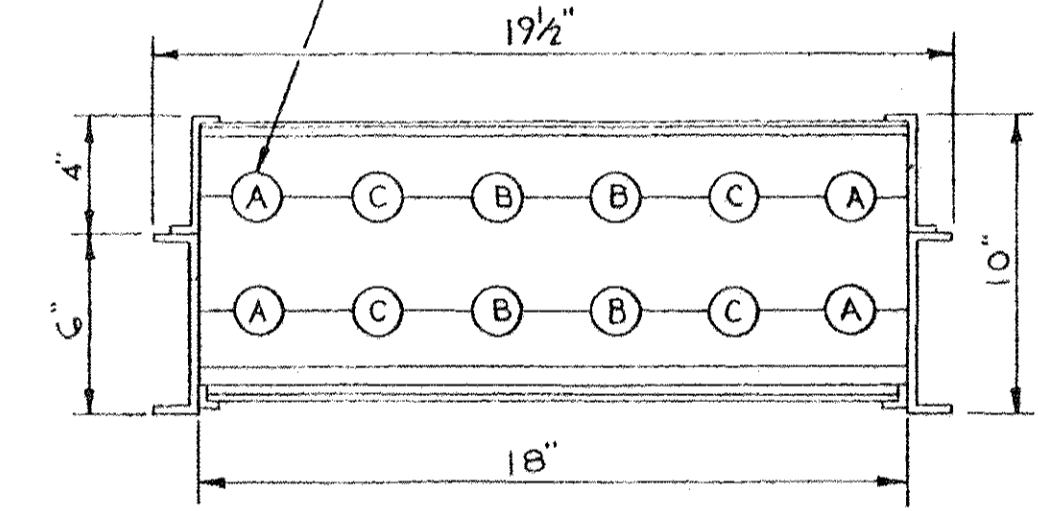


PLAN @ EL. 412'-0"
 T.O.S. @ EL. 436'-0" (-6")



15KV, 1/C 500MCM, Cu. Shielded Cable,
 4 Per Phase, Approx. O.D. 1.49" for XBD-14D-ES
 8KV, 1/2 500MCM Cu. Non-Shielded
 CABLE, 4 PER PHASE, APPROX. O.D. 1.598"



2000A BKV 3Ø-3W SYSTEM
 CATALOG NO. 8CB1234-
 INDOOR CABLE-BUS CROSS SECTION
 APPROX. WT. PER FT. 44 LBS.

SOUTH CAROLINA ELECTRIC & GAS CO.
 VIRGIL C. SUMNER NUCLEAR STATION UNIT No. 1
 APPROVED CHECKING IS ONLY FOR GENERAL DESIGN AND GENERAL DIMENSIONS SET FORTH IN CONTRACT DOCUMENTS AND DOES NOT RELIEVE CONTRACTOR FROM HIS OBLIGATION AS TO DETAIL WORKMANSHIP AND GUARANTEES.
 RETURNED FOR CORRECTION
 GILBERT ASSOCIATES, INC.
 BY: R.T. STRAUSSER
 B/M ITEM No. ED-1 DATE 5/19/77

● - INDICATES SUPPORT CONNECTION TO OVERHEAD STRUCTURAL STEEL

FSAR Figure 8.3-0f
 INDOOR CABLE BUS LAYOUT & SECTIONS
 PLAN VIEW, ELEVATION 412'-0",
 COL. 8 TO 11.1 & COL. A TO C
 VENDOR/DRAWING NO. HUSKY PRODUCTS INC. 916400-106

DESIGN ENGINEERING		V.C. SUMNER NUCLEAR STATION, JENKINSVILLE, S.C.	
NO.	DATE	BY	REVISION
4	08/07/77	JTS	REVISED PER ECR-50919
3	10/11/76	DDJ	REVISED PER ECR-70028

APPROVED	DDJ	MGR	DDJ
SCALE	AS SHOWN	DRAWING NUMBER	IMS-33-033
NO.	DATE	BY	REVISION

