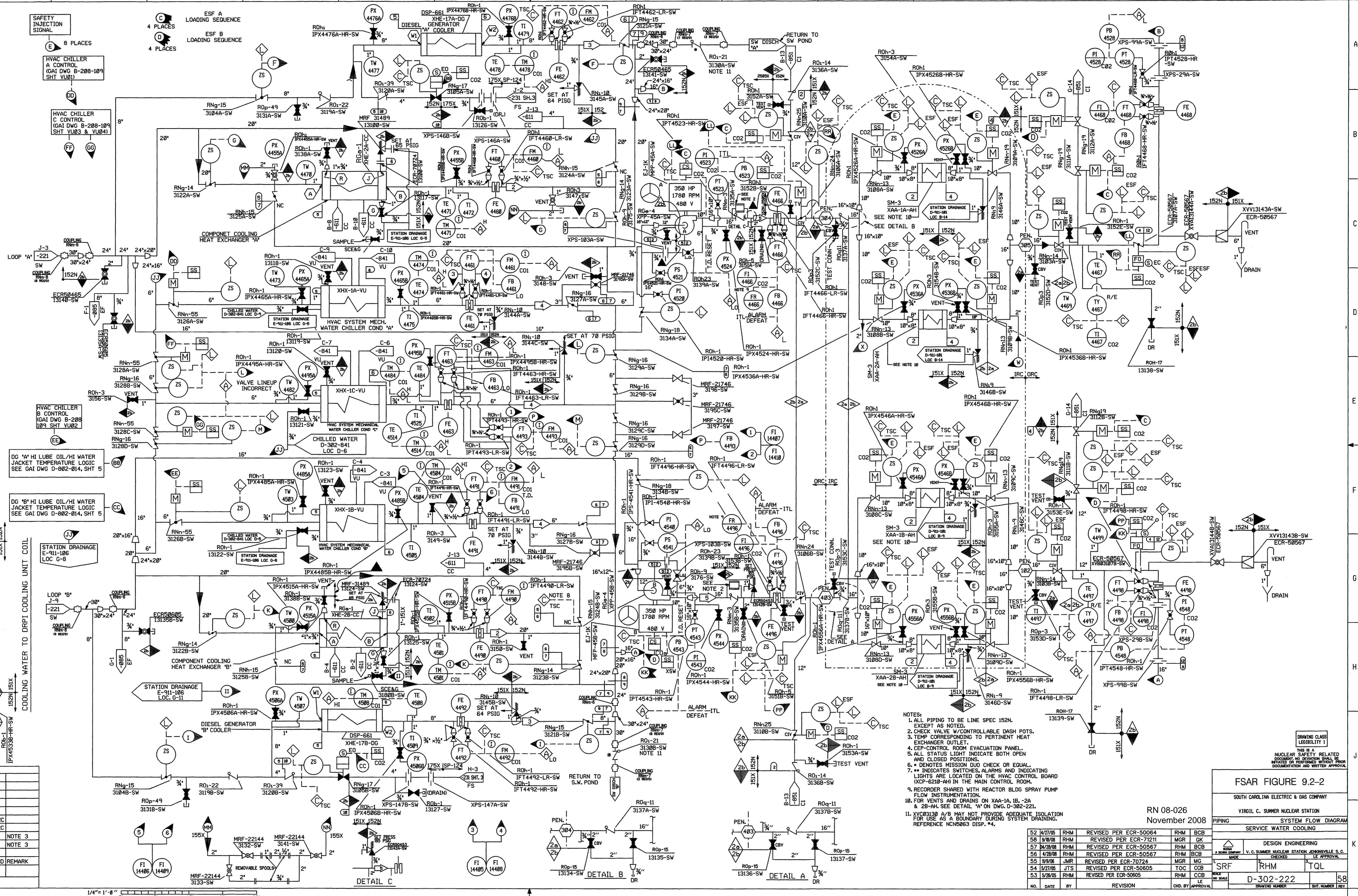


SYSTEM DATA						
LINE	GPM	PSIG	"F	BY	REMARKS	
1	35	50	85	JJW	NORMAL	
2	9000	50	130		POST ACCID	
3	1000	50	95		NORMAL	
4	820	45	> 65		POST ACCID	
5	500	45	> 65		POST ACCID	
6	2300 to 2400	157	95		POST ACCID TYPICAL FLOW	
7	2000	150	95		POST ACCID TEST SPEC MINIMUM FLOW	
						*APPROX.



DESIGN DATA												
PSIG	F	UPSET	HYDR	BY	CHD	REMARK						
1	NORMAL											

HYDROSTATIC TEST TEMP. 60°											
LINE	GPM	PSIG	"F	BY	REMARKS						
12	120	95	188	214	<1X	235	CCS				
10	125	95	165	95	<1X	210	RJS				
9	16	150	20	150	<1X	25	CCS				
8	16	95	20	214	<1X	25	CCS				
7	16	124	20	130		25	WTW/LRC				
6	65	124	65	130		82	WTW/LRC				
5	65	95	65	95		82	CCS				NOTE 3
4	120	95	188	214	<1X	235	CCS				NOTE 3
2	160	95	185	95	<1X	235	CCS				

- NOTES:
1. ALL PIPING TO BE LINE SPEC 152N.
 2. CHECK VALVE W/CONTROLLABLE DASH POTS.
 3. TEMP CORRESPONDING TO PERTINENT HEAT EXCHANGER OUTLET.
 4. CEP-CONTROL ROOM EVACUATION PANEL.
 5. ALL STATUS LIGHT INDICATE BOTH OPEN AND CLOSED POSITIONS.
 6. * DENOTES MISSION CRITICAL CHECK OR EQUAL.
 7. ** INDICATES SWITCHES, ALARMS AND INDICATING LIGHTS ARE LOCATED ON THE HVAC CONTROL BOARD (XCP-6210-AH) IN THE MAIN CONTROL ROOM.
 8. RECORDER SHARED WITH REACTOR BLDG SPRAY PUMP.
 9. FOR VENTS AND DRAINS ON XAA-1A, 1B, 2A & 2B-AH SEE DETAIL 'A' ON DWG. D-302-221.
 10. XVC03138 A/B MAY NOT PROVIDE ADEQUATE ISOLATION FOR USE AS A BOUNDARY DURING SYSTEM DRAINING. REFERENCE NCS0863 DISP. #4.

RN 08-026
November 2008

REVISION		DATE	BY	REVISION	DATE	BY	REVISION	DATE	BY
52	4/21/06	RHM		REVISED PER ECR-50064		RHM	BCB		
58	9/10/06	RHM		REVISED PER ECR-71211		MGR	GK		
57	10/28/06	RHM		REVISED PER ECR-50567		RHM	BCB		
56	4/28/06	RHM		REVISED PER ECR-50567		RHM	BCB		
55	1/19/06	JMR		REVISED PER ECR-70724		MGR	MG		
54	5/27/05	JTS		REVISED PER ECR-50605		TOC	CCB		
53	5/28/05	RHM		REVISED PER ECR-50605		RHM	CCB		

FSAR FIGURE 9.2-2
SOUTH CAROLINA ELECTRIC & GAS COMPANY
VIRGIL C. SUMNER NUCLEAR STATION
PIPING SERVICE WATER COOLING SYSTEM FLOW DIAGRAM

DESIGN CLASS LEGIBILITY 1
NUCLEAR SAFETY RELATED DOCUMENTS OR DEVIATION SHEETS MUST BE APPROVED BY THE DESIGN ENGINEER AND THE QUALITY CONTROL ENGINEER BEFORE DOCUMENTATION AND WRITTEN APPROVAL.

DESIGN ENGINEERING
V. C. SUMNER NUCLEAR STATION
CHECKED

NO. DATE BY REVISION

NO. DATE BY REVISION

NO. DATE BY REVISION

NO. DATE BY REVISION

NO. DATE BY REVISION

NO. DATE BY REVISION

NO. DATE BY REVISION

NO. DATE BY REVISION

NO. DATE BY REVISION

NO. DATE BY REVISION

NO. DATE BY REVISION

NO. DATE BY REVISION

NO. DATE BY REVISION

NO. DATE BY REVISION

NO. DATE BY REVISION

NO. DATE BY REVISION

NO. DATE BY REVISION

NO. DATE BY REVISION

NO. DATE BY REVISION

NO. DATE BY REVISION

NO. DATE BY REVISION

NO. DATE BY REVISION

NO. DATE BY REVISION

NO. DATE BY REVISION

NO. DATE BY REVISION

NO. DATE BY REVISION

NO. DATE BY REVISION

NO. DATE BY REVISION

NO. DATE BY REVISION

NO. DATE BY REVISION

NO. DATE BY REVISION

NO. DATE BY REVISION

NO. DATE BY REVISION

NO. DATE BY REVISION

NO. DATE BY REVISION

NO. DATE BY REVISION

NO. DATE BY REVISION

NO. DATE BY REVISION

NO. DATE BY REVISION