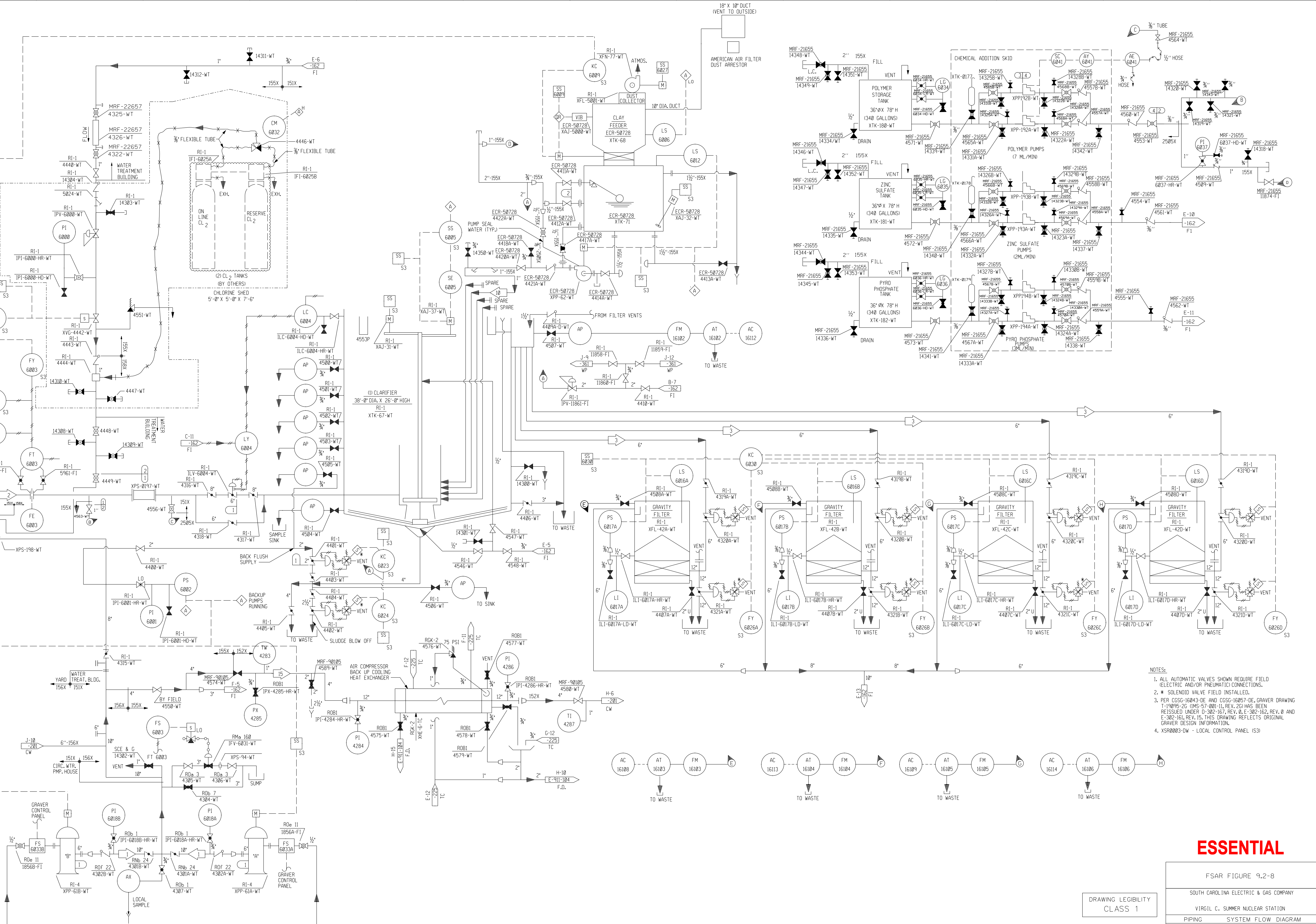


SYSTEM DATA						
#	GPM	PSIG	°F	BY	REMARKS	
1	1100	52	90	AM	RATING	
2	1000	20	90	AM	GRAVITY FLOW	
3	250	90	90	AM	GRAVITY FLOW	
10	5	35	90	GHR		

HYDRO TEST TEMP. AMBIENT						
#	PSIG	°F	PSIG	°F	DURAL	HYDRO
4	145	90	-	-	TEB	JJM
3	5	90	-	-	TEB	JJM
2	115	90	130	95	<1X	225
1	55	90	64	95	<1X	80

#	PSIG	°F	PSIG	°F	DURAL	HYDRO	BY	CHKD	REMARKS
	NORMAL	UPSET							



- NOTES:
1. ALL AUTOMATIC VALVES SHOWN REQUIRE FIELD (ELECTRIC AND/OR PNEUMATIC) CONNECTIONS.
 2. * SOLENOID VALVE FIELD INSTALLED.
 3. PER C650-16043-DE AND C650-16057-DE, GRAVER DRAWING E-302-161, REV. 15, THIS DRAWING REFLECTS ORIGINAL GRAVER DESIGN INFORMATION.
 4. XSR003-DW - LOCAL CONTROL PANEL (S3)

DRAWING LEGIBILITY CLASS 1

ESSENTIAL

FSAR FIGURE 9.2-8			
SOUTH CAROLINA ELECTRIC & GAS COMPANY			
VIRGIL C. SUMNER NUCLEAR STATION			
PIPING SYSTEM FLOW DIAGRAM			
WATER TREATMENT SYSTEM			
DESIGN ENGINEERING			
V. C. SUMNER NUCLEAR STATION, JENKINSVILLE, S. C.			
DATE	CHECKED	LE APPROVAL	
27 8/15/01	DDJ	REVISED PER ECR-50728	MGR LMS
26 11/07/01	DDJ	REVISED PER ECR-71236	RHM STB
25 4/20/01	JTS	REVISED PER ECR-50509	MGR TOC
24 4/28/01	JMR	REVISED PER ECR-70692	MGR GJM
23 6/15/01	RHM	REVISED PER ECR-70378	RHM MGR
22 2/14/02	JTS	REVISED PER ECR-70108	MGR JEG
28 08/12/2014	CMS	REVISED PER ECR-72460	chk BT/VE
NO.	DATE	BY	REVISION
27	8/15/01	DDJ	REVISED PER ECR-50728
26	11/07/01	DDJ	REVISED PER ECR-71236
25	4/20/01	JTS	REVISED PER ECR-50509
24	4/28/01	JMR	REVISED PER ECR-70692
23	6/15/01	RHM	REVISED PER ECR-70378
22	2/14/02	JTS	REVISED PER ECR-70108
28	08/12/2014	CMS	REVISED PER ECR-72460

