

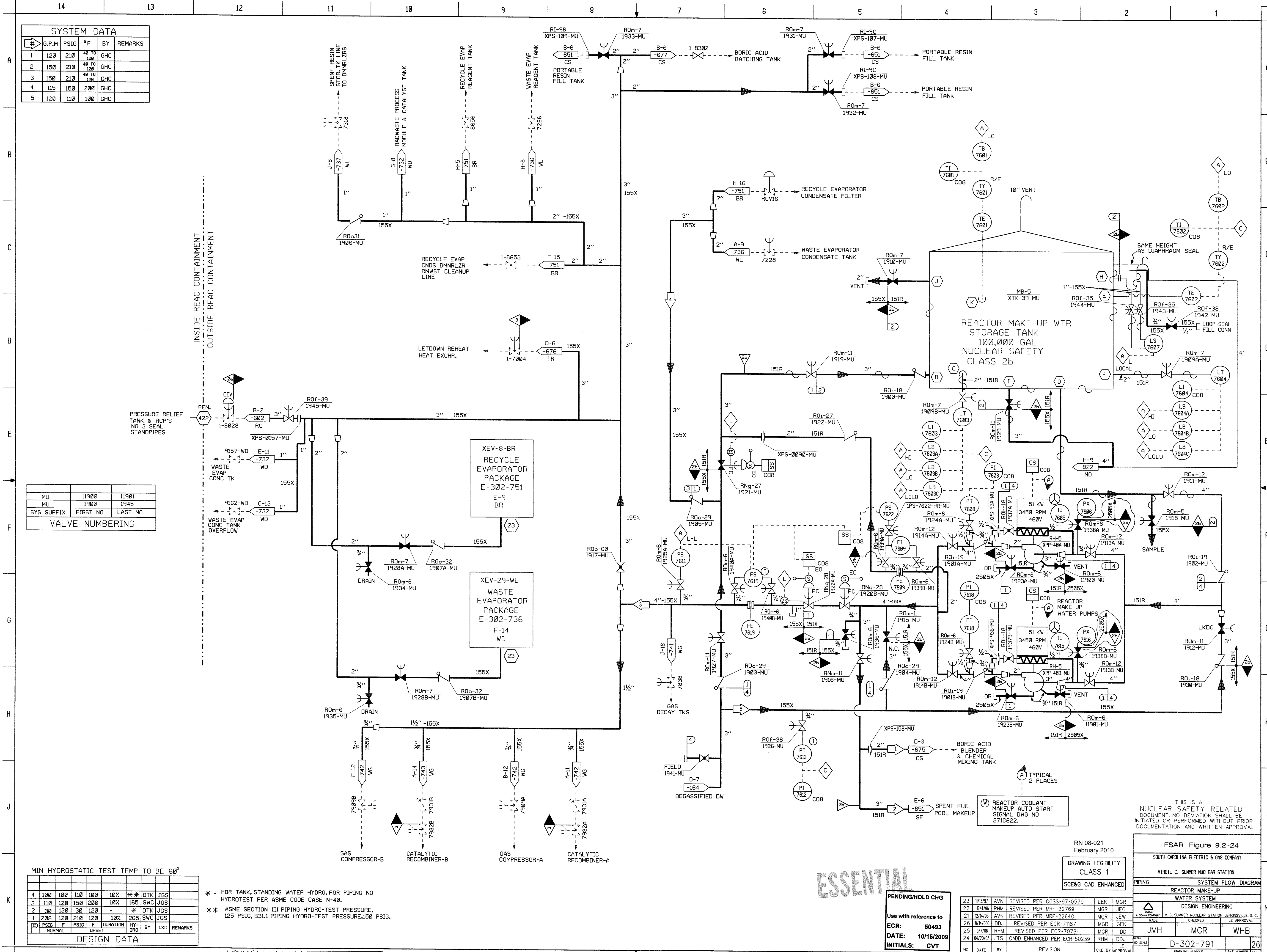
SYSTEM DATA					
#	G.P.M	PSIG	°F	BY	REMARKS
1	120	210	48 TO 120	GHC	
2	150	210	48 TO 120	GHC	
3	150	210	48 TO 120	GHC	
4	115	150	200	GHC	
5	120	110	100	GHC	

MU	11900	11901
MU	1900	1945
SYS SUFFIX	FIRST NO	LAST NO
VALVE NUMBERING		

MIN HYDROSTATIC TEST TEMP TO BE 60°										
#	120	120	110	120	10%	10%	10%	10%	DTK	JGS
1	120	120	110	120	10%	10%	10%	10%	DTK	JGS
2	30	120	30	120	-	-	-	-	DTK	JGS
3	120	120	120	120	10%	10%	10%	265	SWC	JGS

* - FOR TANK, STANDING WATER HYDRO, FOR PIPING NO HYDROTEST PER ASME CODE CASE N-40.
 ** - ASME SECTION III PIPING HYDRO-TEST PRESSURE, 125 PSIG, B31.1 PIPING HYDRO-TEST PRESSURE, 150 PSIG.

#	PSIG	F	PSIG	F	DURATION	HY-DRD	BY	CHKD	REMARKS
1	200	120	210	120	10%	265	SWC	JGS	
DESIGN DATA									



ESSENTIAL

PENDING/HOLD CHG
 Use with reference to:
 ECR: 60493
 DATE: 10/15/2009
 INITIALS: CVT

NO.	DATE	BY	REVISION	CHKD. BY	APPROVAL
23	10/10/07	AVN	REVISED PER CGSS-97-0579	LEK	MGR
22	10/4/06	RHM	REVISED PER MRF-22769	MGR	JEC
21	10/4/05	AVN	REVISED PER MRF-22640	MGR	JEW
20	8/14/00	DDJ	REVISED PER ECR-71187	MGR	GFK
19	3/7/00	RHM	REVISED PER ECR-70781	MGR	DDJ
18	10/20/05	JTS	CADD ENHANCED PER ECR-50239	RHM	DDJ

RN 08-021
 February 2010
 DRAWING LEGIBILITY
 CLASS 1
 SCE&G CAD ENHANCED

THIS IS A
 NUCLEAR SAFETY RELATED
 DOCUMENT. NO DEVIATION SHALL BE
 INITIATED OR PERFORMED WITHOUT PRIOR
 DOCUMENTATION AND WRITTEN APPROVAL.

FSAR Figure 9.2-24	
SOUTH CAROLINA ELECTRIC & GAS COMPANY	
VIRGIL C. SUMNER NUCLEAR STATION	
PIPING SYSTEM FLOW DIAGRAM	
REACTOR MAKE-UP WATER SYSTEM	
DESIGN ENGINEERING	
DATE	BY
10/15/09	JHM
10/15/09	MGR
10/15/09	WHB
D-302-791	
26	