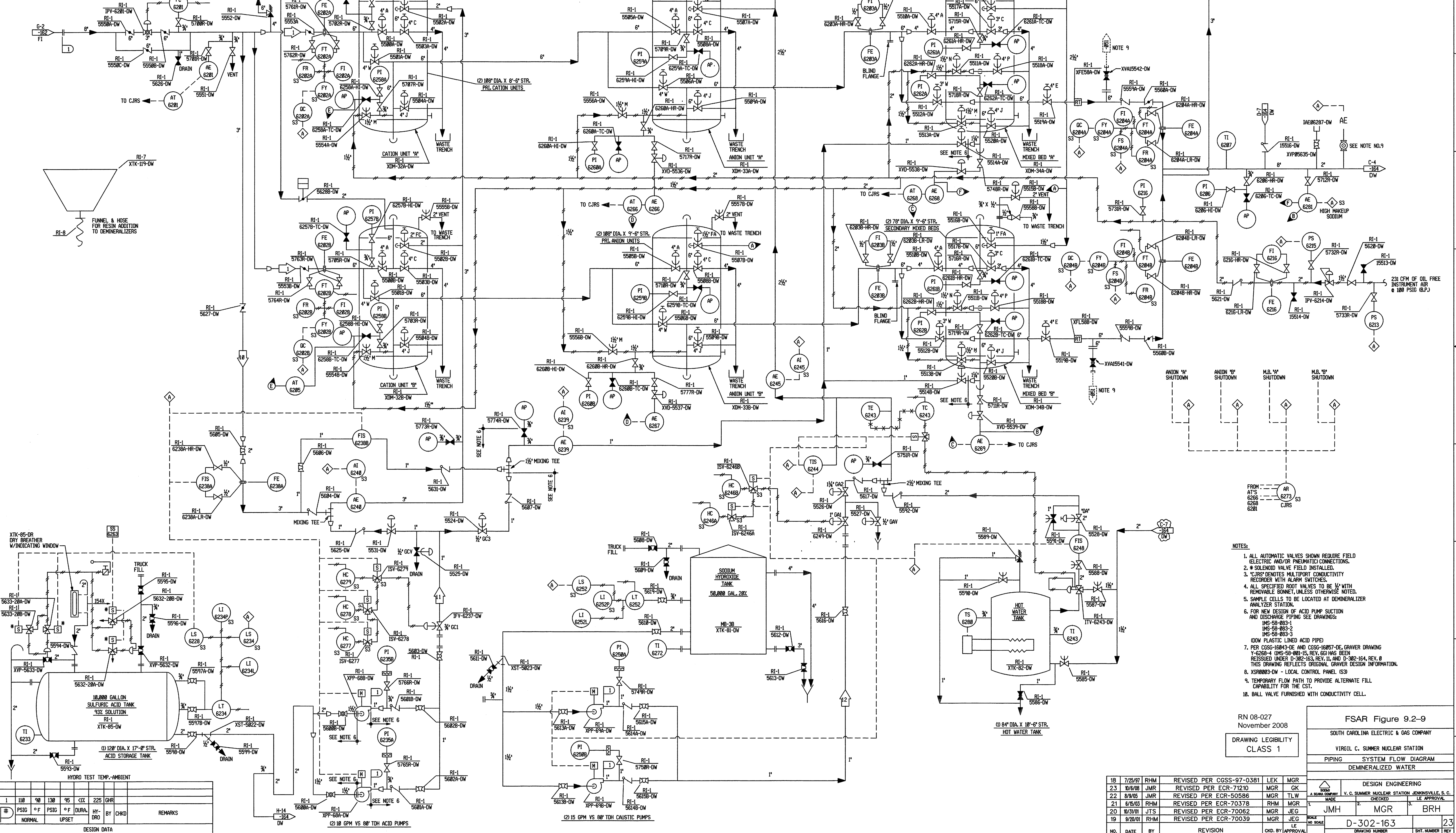


SYSTEM DATA					
#	GPM	PSIG	°F	BY	REMARKS
1	375	80	90	AM	
2	65	48	90	AM	
10	99.4	100	90	GHR	...
11	10	35	75	GHR	...
12	15	35	75	GHR	...

... DURING REGENERATION

... DURING REGENERATION



- NOTES:
1. ALL AUTOMATIC VALVES SHOWN REQUIRE FIELD (ELECTRIC AND/OR PNEUMATIC) CONNECTIONS.
  2. \* SOLENOID VALVE FIELD INSTALLED.
  3. \* C.J.R.S. DENOTES MULTIPORT CONDUCTIVITY RECORDER WITH ALARM SWITCHES.
  4. ALL SPECIFIED ROOT VALVES TO BE 1/2" WITH REMOVABLE BONNET, UNLESS OTHERWISE NOTED.
  5. SAMPLE CELLS TO BE LOCATED AT DEMINERALIZER ANALYZER STATION.
  6. FOR NEW DESIGN OF ACID PUMP SUCTION AND DISCHARGE PIPING SEE DRAWINGS:
    - IMS-59-003-1
    - IMS-59-003-2
    - IMS-59-003-3
 (DOM PLASTIC LINED ACID PIPE)
  7. PER C050-10043-DE AND C050-10057-DE, GRAVER DRAWING Y-4203-4 (IMS-59-001-15, REV. 03) HAS BEEN REISSUED UNDER D-382-153, REV. 11, AND D-382-164, REV. 0. THIS DRAWING REFLECTS ORIGINAL GRAVER DESIGN INFORMATION.
  8. XSR0003-DW - LOCAL CONTROL PANEL IS39
  9. TEMPORARY FLOW PATH TO PROVIDE ALTERNATE FILL CAPABILITY FOR THE CST.
  10. BALL VALVE FURNISHED WITH CONDUCTIVITY CELL.

RN 08-027  
November 2008

DRAWING LEGIBILITY CLASS 1

FSAR Figure 9.2-9  
SOUTH CAROLINA ELECTRIC & GAS COMPANY  
VIRGIL C. SUMNER NUCLEAR STATION  
PIPING SYSTEM FLOW DIAGRAM  
DEMINERALIZED WATER

NO.	DATE	BY	REVISION	CHKD. BY	APPROVAL
18	7/25/97	RHM	REVISED PER CGSS-97-0381	LEK	MGR
23	10/6/08	JMR	REVISED PER ECR-71210	MGR	GK
22	8/30/05	JMR	REVISED PER ECR-50586	MGR	TLW
21	6/16/03	RHM	REVISED PER ECR-70378	RHM	MGR
20	3/01/01	JTS	REVISED PER ECR-70062	MGR	JEG
19	9/20/01	RHM	REVISED PER ECR-70039	MGR	JEG

DESIGN ENGINEERING  
V. C. SUMNER NUCLEAR STATION, JENKINSVILLE, S. C.  
MADE IN THE U.S.A.  
JMH MGR BRH  
D-302-163  
DRAWING NUMBER SHEET NUMBER REV

HYDRO TEST TEMP-AMBIENT					
#	PSIG	°F	PSIG	°F	DURA.
1	110	90	130	95	125
					GHR

DESIGN DATA					
#	PSIG	°F	PSIG	°F	DURA.
					HY. DRO
					BY CHKD
					REMARKS

