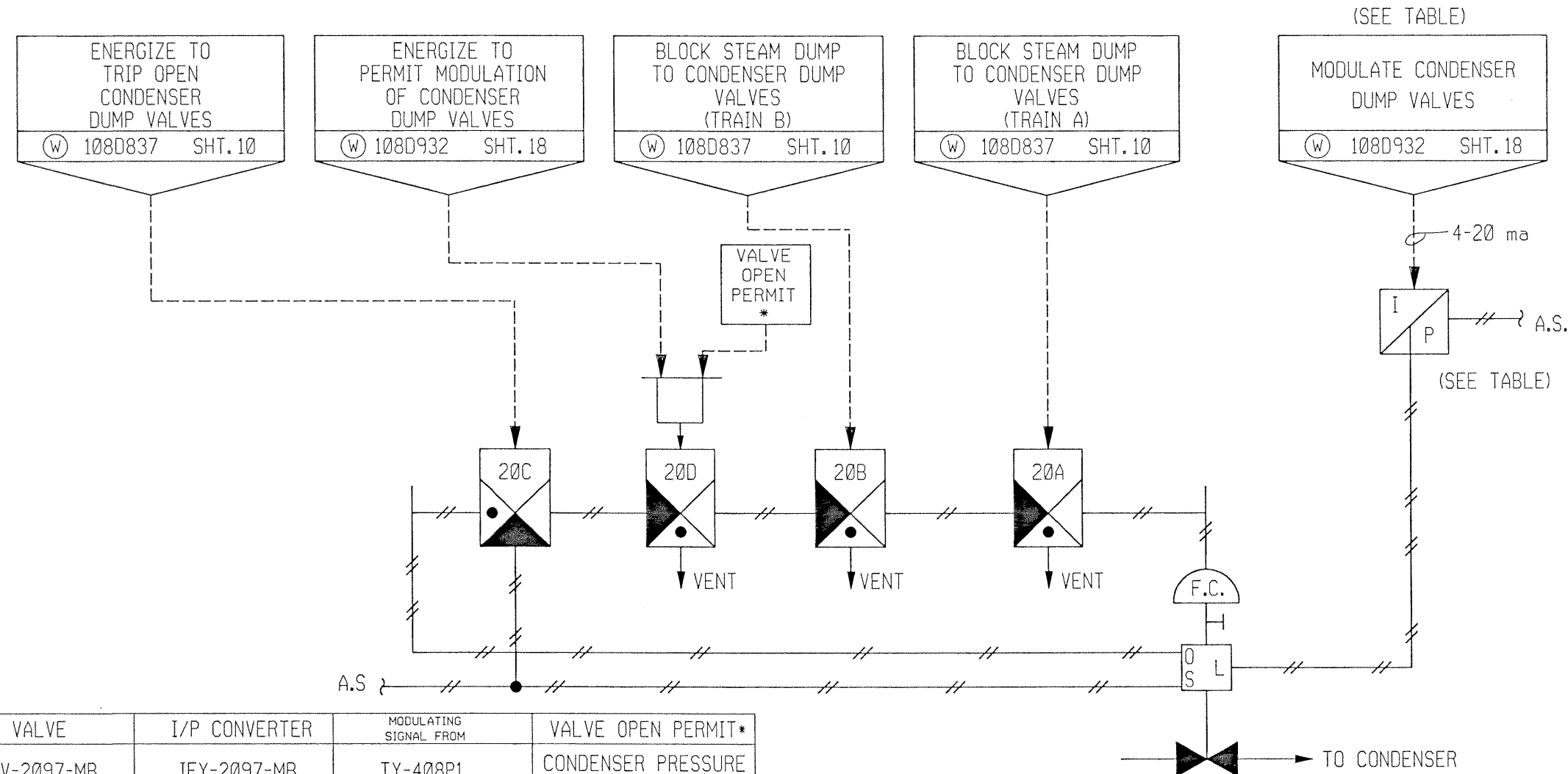


REFERENCES:

- D-302-031 FLUID SYSTEM DIAGRAM
- B-802-001 FUNCTIONAL DIAGRAMS
- W108D932 (W) PROCESS CONTROL BLOCK DIAGRAMS, SHEET 18
- W108D837 (W) FUNCTIONAL DIAGRAMS, SHEET 10

SOUTH CAROLINA ELECTRIC & GAS COMPANY				MADE	CHKD	DRAWING NUMBER		SHT. NO.	REV
REV	REVISIONS			MFP	DJM	04 4461 SS-808-031		1	3
3	REVISD PER ECR-70028			DATE		1/7/77		DESIGN ENGINEERING	
BY	CHECKED	LE	APPROVAL	I & C		1. N/A 2. N/A		V. C. SUMMER NUCLEAR STATION	
DDJ	MGR	DDJ	9/27/01	LOOP DIAGRAM				JENKINSVILLE, S. C.	
MAIN STEAM SYSTEM				SCALE NO SCALE		W.O.		ENG.	
STEAM DUMP/TURBINE BYPASS (MB)								ENGINEER APPROVAL DEPT DATE	

FSAR Figure 10.4-4, Sht. 1



VALVE	I/P CONVERTER	MODULATING SIGNAL FROM	VALVE OPEN PERMIT*
IFV-2097-MB	IFY-2097-MB	TY-408P1	CONDENSER PRESSURE < 4.5" HGA
IFV-2106-MB	IFY-2106-MB	TY-408P2	NONE REQUIRED
IFV-2107-MB	IFY-2107-MB	TY-408P3	NO LOSS OF STATOR COOLANT
IFV-2117-MB	IFY-2117-MB	TY-408P1	CONDENSER PRESSURE < 4.5" HGA
IFV-2126-MB	IFY-2126-MB	TY-408P2	NONE REQUIRED
IFV-2127-MB	IFY-2127-MB	TY-408P3	NO LOSS OF STATOR COOLANT

NOTES:
1. SOLENOIDS SHOWN DE-ENERGIZED.