

SYSTEM DATA

NO.	DATE	BY	REVISION	REMARKS
1	0.820	965	542	*
2	1.639	100	338	*
3	0.879	991	545	*
4				
5				
6				

\* STEAM DUMP SYSTEM IN OPERATION FOLLOWING TURBINE TRIP. ACTUAL VALUES WILL VARY DEPENDING ON SPECIFIC OPERATING CONDITIONS DURING AND PRECEDING STEAM DUMP.

NOTES:  
A. TEMPORARY STRAINER FOR SYSTEM CLEAN UP, TO BE REMOVED AFTER FINAL FLUSH.

HYDROSTATIC TEST TEMP. 60°F

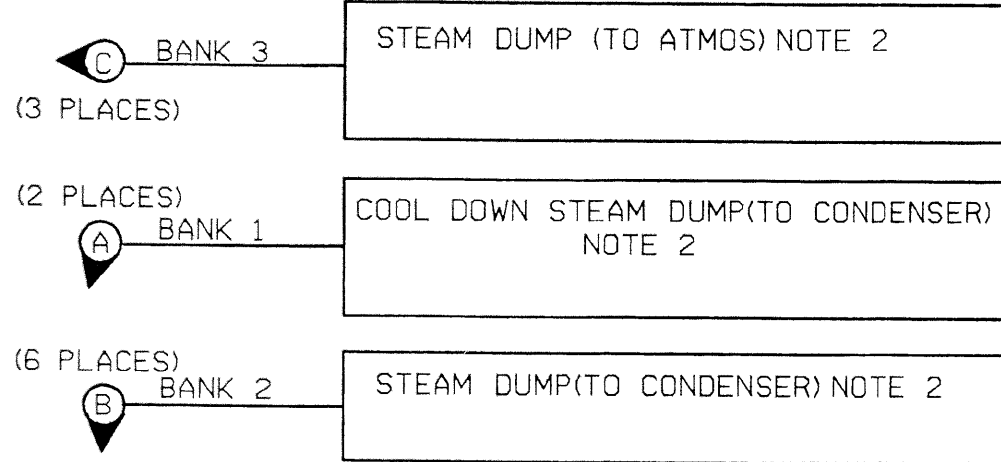
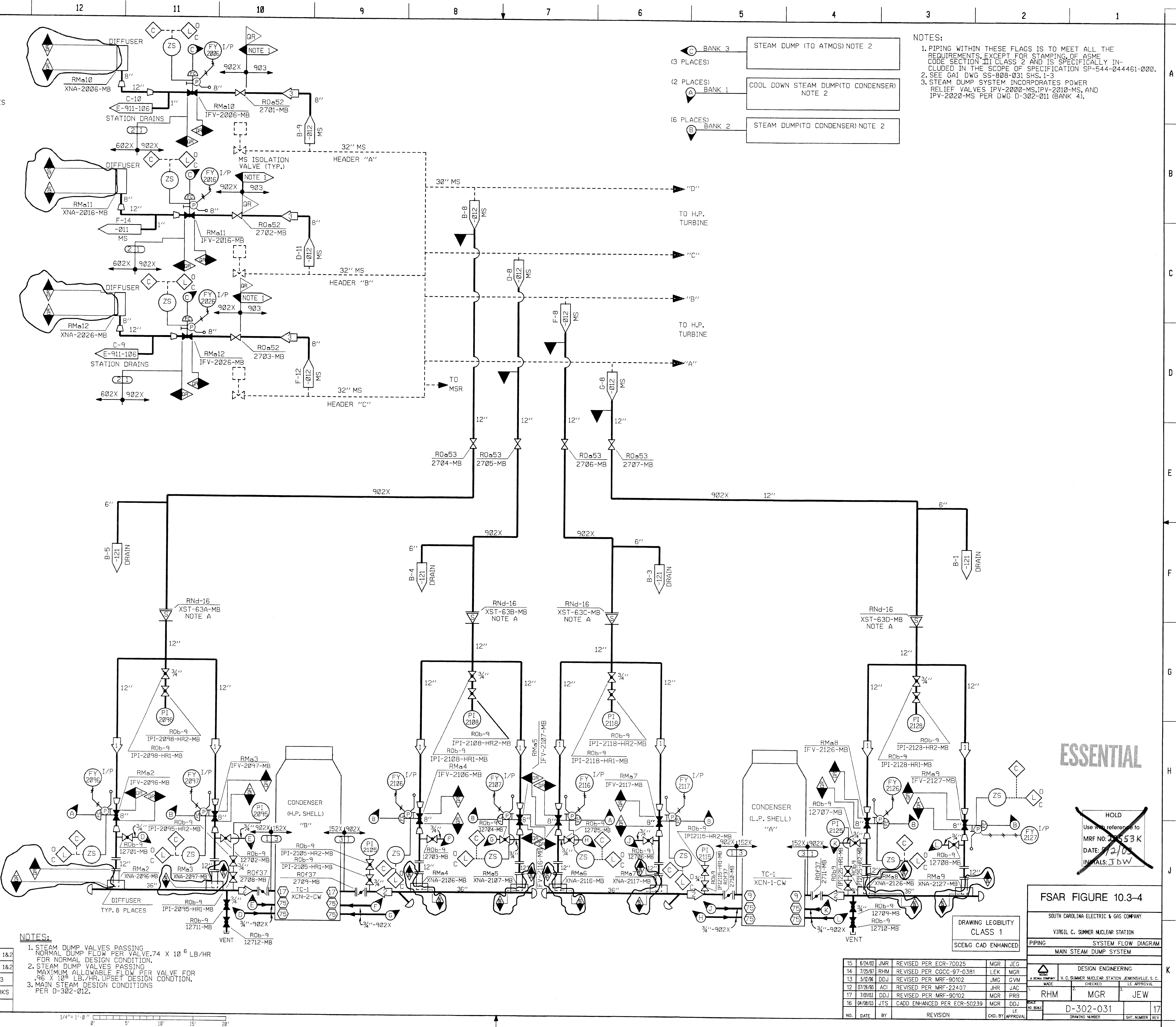
NO.	PSIG	F	BY	REMARKS	
3	100	400	130	380	<1% HNG HNG NOTES 1&2
2	0	AMB	1005	560	<1% 1185 HNG HNG NOTES 1&2
1	1185	600	1284	600	<1% 1780 HNG HNG NOTE 3

DESIGN DATA

PSIG	F	DURATION	HYD	BY	CKD	REMARKS
NORMAL	UPSET					

NOTES:

- STEAM DUMP VALVES PASSING NORMAL DUMP FLOW PER VALVE.  $7.4 \times 10^6$  LB/HR FOR NORMAL DESIGN CONDITION.
- STEAM DUMP VALVES PASSING MAXIMUM ALLOWABLE FLOW PER VALVE FOR  $.96 \times 10^6$  LB/HR. UPSET DESIGN CONDITION.
- MAIN STEAM DESIGN CONDITIONS PER D-302-012.



- NOTES:
- PIPING WITHIN THESE FLAGS IS TO MEET ALL THE REQUIREMENTS, EXCEPT FOR STAMPING OF ASME CODE SECTION III CLASS 2 AND IS SPECIFICALLY INCLUDED IN THE SCOPE OF SPECIFICATION SP-544-044461-000.
  - SEE GAI DWG SS-808-031 SHS.1-3
  - STEAM DUMP SYSTEM INCORPORATES POWER RELIEF VALVES IPV-2000-MS, IPV-2010-MS, AND IPV-2020-MS PER DWG D-302-011 (BANK 4).

ESSENTIAL

HOLD  
Use with reference to MRF NO. 553K  
DATE: 7/2/03  
INITIALS: J b w

FSAR FIGURE 10.3-4  
SOUTH CAROLINA ELECTRIC & GAS COMPANY  
VIRGIL C. SUMNER NUCLEAR STATION, JENKINSVILLE, S.C.  
PIPING SYSTEM FLOW DIAGRAM  
MAIN STEAM DUMP SYSTEM

DRAWING LEGIBILITY CLASS 1  
SCE&G CAD ENHANCED

NO.	DATE	BY	REVISION	REVISION	MGR	JEG	LEK	MGR	QVM	JAC	PRB	DDJ	NO.	DATE	BY	REVISION	REVISION	MGR	JEG	LEK	MGR	QVM	JAC	PRB	DDJ
15	6/24/02	JMR	REVISED PER ECR-70025										16	04/08/03	JTS	CADD ENHANCED PER ECR-50239									
14	7/25/97	RHM	REVISED PER CGCC-97-0381										17	7/26/03	DDJ	REVISED PER MRF-90102									
13	5/02/96	DDJ	REVISED PER MRF-90102										18	01/08/03	JTS	CADD ENHANCED PER ECR-50239									
12	07/26/93	ACI	REVISED PER MRF-22407										19	07/26/93	ACI	REVISED PER MRF-22407									
11	07/26/93	DDJ	REVISED PER MRF-90102										20	07/26/93	DDJ	REVISED PER MRF-90102									
10	07/26/93	DDJ	REVISED PER MRF-90102										21	07/26/93	DDJ	REVISED PER MRF-90102									
9	07/26/93	DDJ	REVISED PER MRF-90102										22	07/26/93	DDJ	REVISED PER MRF-90102									
8	07/26/93	DDJ	REVISED PER MRF-90102										23	07/26/93	DDJ	REVISED PER MRF-90102									
7	07/26/93	DDJ	REVISED PER MRF-90102										24	07/26/93	DDJ	REVISED PER MRF-90102									
6	07/26/93	DDJ	REVISED PER MRF-90102										25	07/26/93	DDJ	REVISED PER MRF-90102									
5	07/26/93	DDJ	REVISED PER MRF-90102										26	07/26/93	DDJ	REVISED PER MRF-90102									
4	07/26/93	DDJ	REVISED PER MRF-90102										27	07/26/93	DDJ	REVISED PER MRF-90102									
3	07/26/93	DDJ	REVISED PER MRF-90102										28	07/26/93	DDJ	REVISED PER MRF-90102									
2	07/26/93	DDJ	REVISED PER MRF-90102										29	07/26/93	DDJ	REVISED PER MRF-90102									
1	07/26/93	DDJ	REVISED PER MRF-90102										30	07/26/93	DDJ	REVISED PER MRF-90102									

