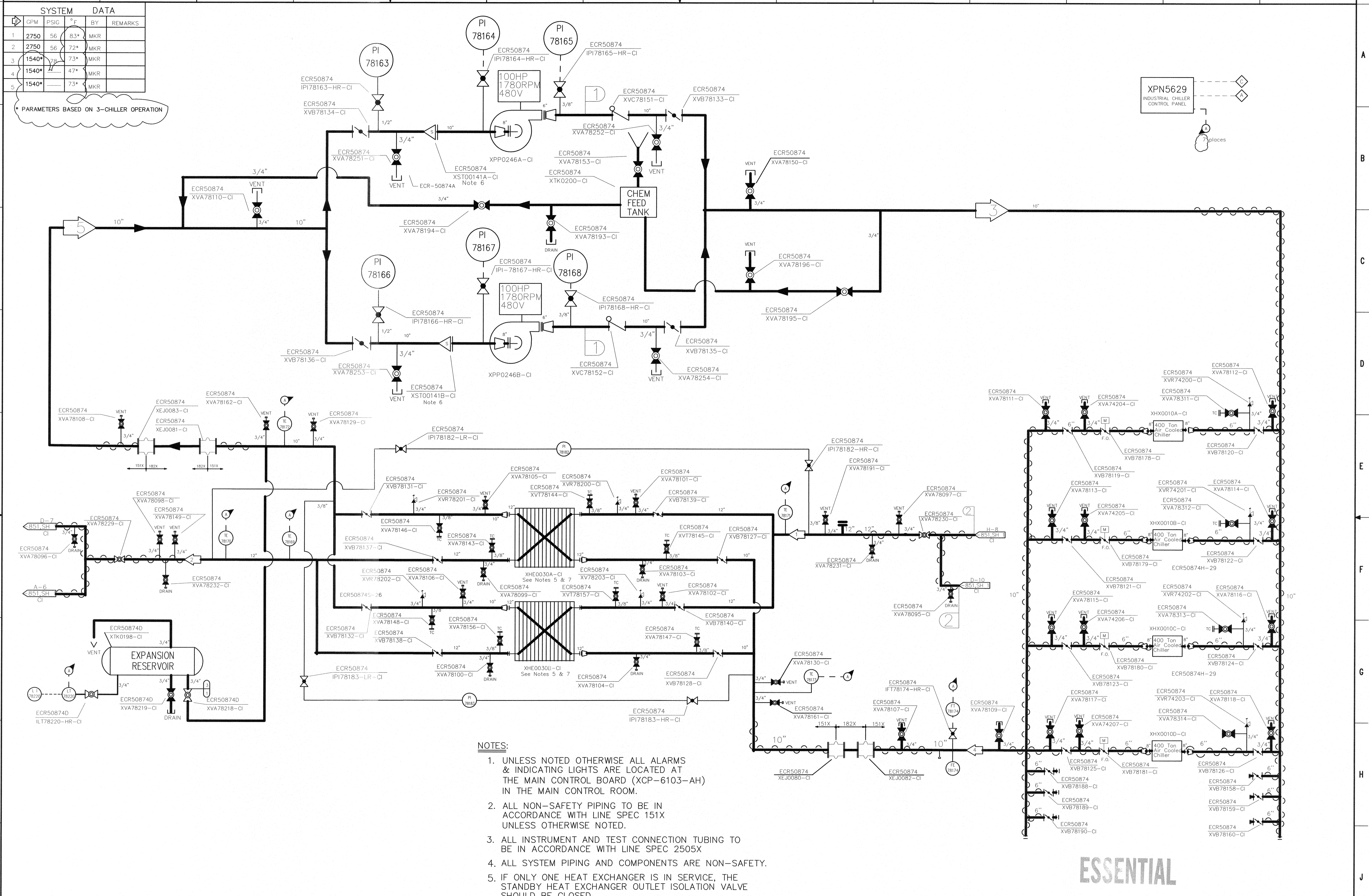


SYSTEM DATA					
OPM	PSIG	°F	BY	REMARKS	
1	2750	56	83*	MKR	
2	2750	56	72*	MKR	
3	1540*	73*	73*	MKR	
4	1540*	47*	47*	MKR	
5	1540*	73*	73*	MKR	

\* PARAMETERS BASED ON 3-CHILLER OPERATION



DESIGN DATA								
PSIG	°F	PSIG	°F	DURATION	HYDRG	BY	CHKD	REMARKS
NORMAL	UPSET							
3	ATM	73	-	-				
2	56	85	60	85				
1	78	54	91	95				

- NOTES:**
- UNLESS NOTED OTHERWISE ALL ALARMS & INDICATING LIGHTS ARE LOCATED AT THE MAIN CONTROL BOARD (XCP-6103-AH) IN THE MAIN CONTROL ROOM.
  - ALL NON-SAFETY PIPING TO BE IN ACCORDANCE WITH LINE SPEC 151X UNLESS OTHERWISE NOTED.
  - ALL INSTRUMENT AND TEST CONNECTION TUBING TO BE IN ACCORDANCE WITH LINE SPEC 2505X
  - ALL SYSTEM PIPING AND COMPONENTS ARE NON-SAFETY.
  - IF ONLY ONE HEAT EXCHANGER IS IN SERVICE, THE STANDBY HEAT EXCHANGER OUTLET ISOLATION VALVE SHOULD BE CLOSED.
  - TEMPORARY STRAINER FOR SYSTEM CLEAN SHOULD BE REMOVED AFTER FINAL FLUSH
  - EACH HX INLET PORT HAS A SST INTERNAL PORT STRAINER, REMOVABLE FROM REAR PRESSURE PLATE

PORT STRAINER SCHEDULE	
EQUIP ID	NAME
XHE0030A-ST1	IND CLG HX A PORT STRAINER
XHE0030A-ST2	IND CLG HX A CHLR SIDE PORT STRAINER
XHE0030B-ST1	IND CLG HX B PORT STRAINER
XHE0030B-ST2	IND CLG HX B CHLR SIDE PORT STRAINER

PENDING/HOLD CHG  
Use with reference to  
ECR: 50874-AD  
DATE: 5/8/2018  
INITIALS: CVT

DRAWING LEGIBILITY CLASS 1

ESSENTIAL

FSAR Figure 9.4-25 SH.2					
SOUTH CAROLINA ELECTRIC & GAS COMPANY					
WRGL C. SUMMER NUCLEAR STATION					
PIPING SYSTEM FLOW DIAGRAM					
INDUSTRIAL COOLING WATER					
DESIGN ENGINEERING					
NO.	DATE	BY	CHKD.	APPROVAL	REVISION
4	5/11/17	JMR			REVISED PER ECR-50874
3	3/21/17	JMR			REVISED PER ECR-50874X
2	10/16	RHM			REVISED PER ECR-50874
1	9/28/16	JMR			REVISED PER ECR-50874
0	11/9/15	JMR			ISSUED PER ECR-50874