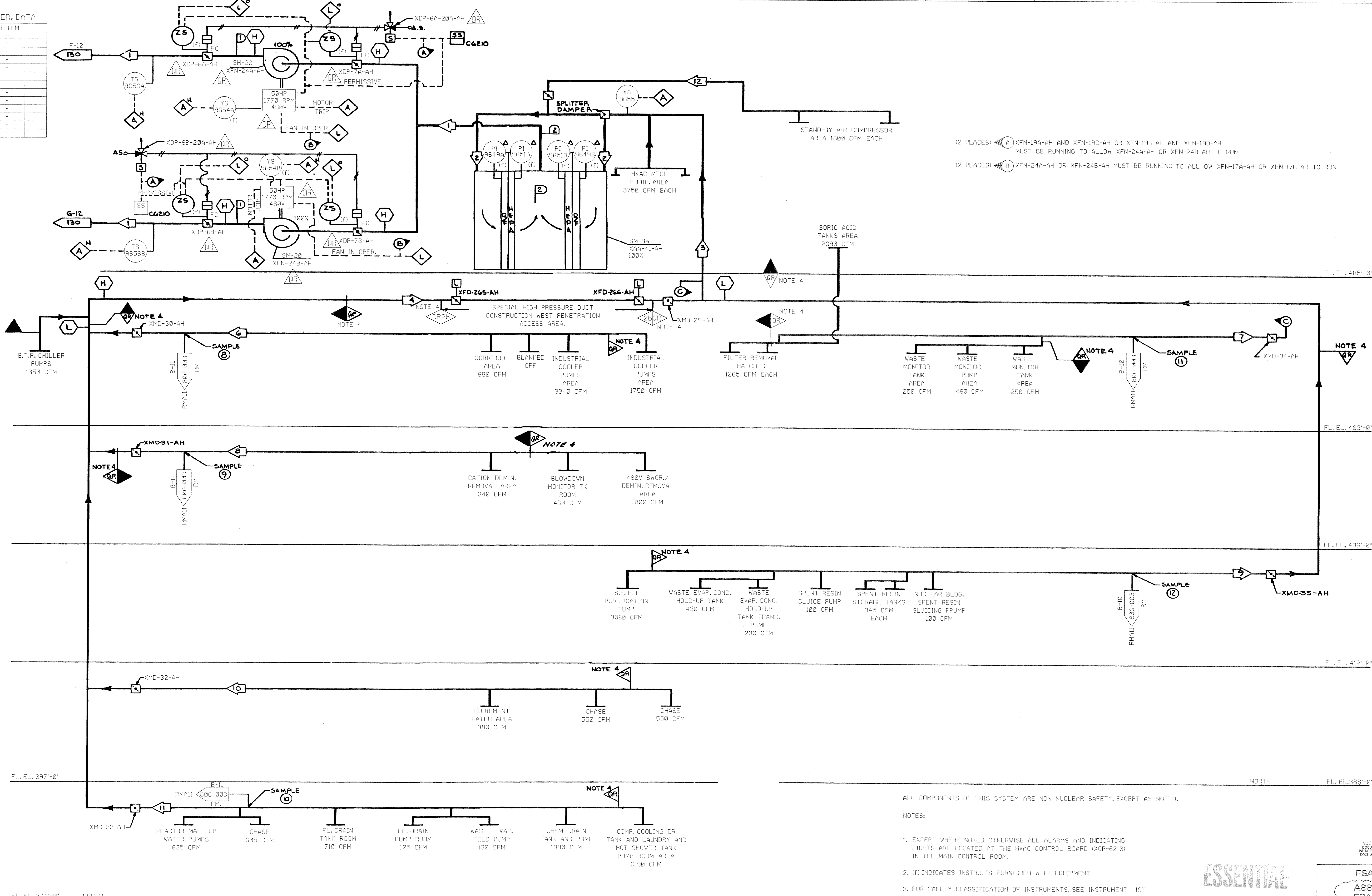


SYSTEM OPER. DATA

	AIR FLOW CFM	AIR TEMP °F
1	39,375	-
2	19,687.5	-
3	28,275	-
4	17,485	-
5	-	-
6	5,770	-
7	6,180	-
8	3,920	-
9	4,610	-
10	1,480	-
11	4,985	-
12	3,600	-



(2 PLACES) (A) XFN-19A-AH AND XFN-19C-AH OR XFN-19B-AH AND XFN-19D-AH  
MUST BE RUNNING TO ALLOW XFN-24A-AH OR XFN-24B-AH TO RUN

(2 PLACES) (B) XFN-24A-AH OR XFN-24B-AH MUST BE RUNNING TO ALL OW XFN-17A-AH OR XFN-17B-AH TO RUN

SYSTEM DESIGN DATA

	AIR FLOW CFM	AIR TEMP °F
1	39,375	65°-95°
2	50,000	65°-95°

ALL COMPONENTS OF THIS SYSTEM ARE NON NUCLEAR SAFETY, EXCEPT AS NOTED.

- NOTES:
- EXCEPT WHERE NOTED OTHERWISE ALL ALARMS AND INDICATING LIGHTS ARE LOCATED AT THE HVAC CONTROL BOARD (XCP-6210) IN THE MAIN CONTROL ROOM.
  - (F) INDICATES INSTR. IS FURNISHED WITH EQUIPMENT
  - FOR SAFETY CLASSIFICATION OF INSTRUMENTS, SEE INSTRUMENT LIST
  - ALL DUCTWORK IDENTIFIED AS QR TO BE PER QRP-4
  - ALL EQUIPMENT IDENTIFIED AS QR TO BE PER TRP-31
- \*QUALITY RELATED-FABRICATION AND INSPECTION PER SCE&G QRP FOR HVAC DUCTS AND SUPPORTS\*

ESSENTIAL

FSAR Figure 9.4-7  
ASSOCIATED WITH  
FSAR Figure 12.2-2

SOUTH CAROLINA ELECTRIC & GAS COMPANY

VIRGIL C. SUMNER NUCLEAR STATION

BUILDING SERVICE SYSTEM FLOW DIAGRAM  
AUX BLDG HEPA EXH SYS  
FLOW DIAGRAM  
DESIGN ENGINEERING

MADE	CHECKED	LE APPROVAL
JMH	DVW	GAA

NO. DATE BY REVISION

21	9/17/02	DDJ	REVISED PER ECR-70249	MGR	DKW
20	10/03/01	DDJ	REVISED PER ECR-70028	MGR	DDJ
19	04/20/93	JMH	REVISED PER CGSS-23-0328	DVW	GAA

D-912-120

