

SYSTEM DATA				
NO.	MAX GPM	PSIG	BY	REMARKS
1	1087	100	KRC	
2	967	100	KRC	
4	262	80	145	KRC
5	240	80	125	KRC
6	150	80	145	KRC
7	5	80	145	KRC
8	120	100	120	KRC
9	120	130	120	KRC
10	40	80	145	KRC
11	1087	70	125	KRC

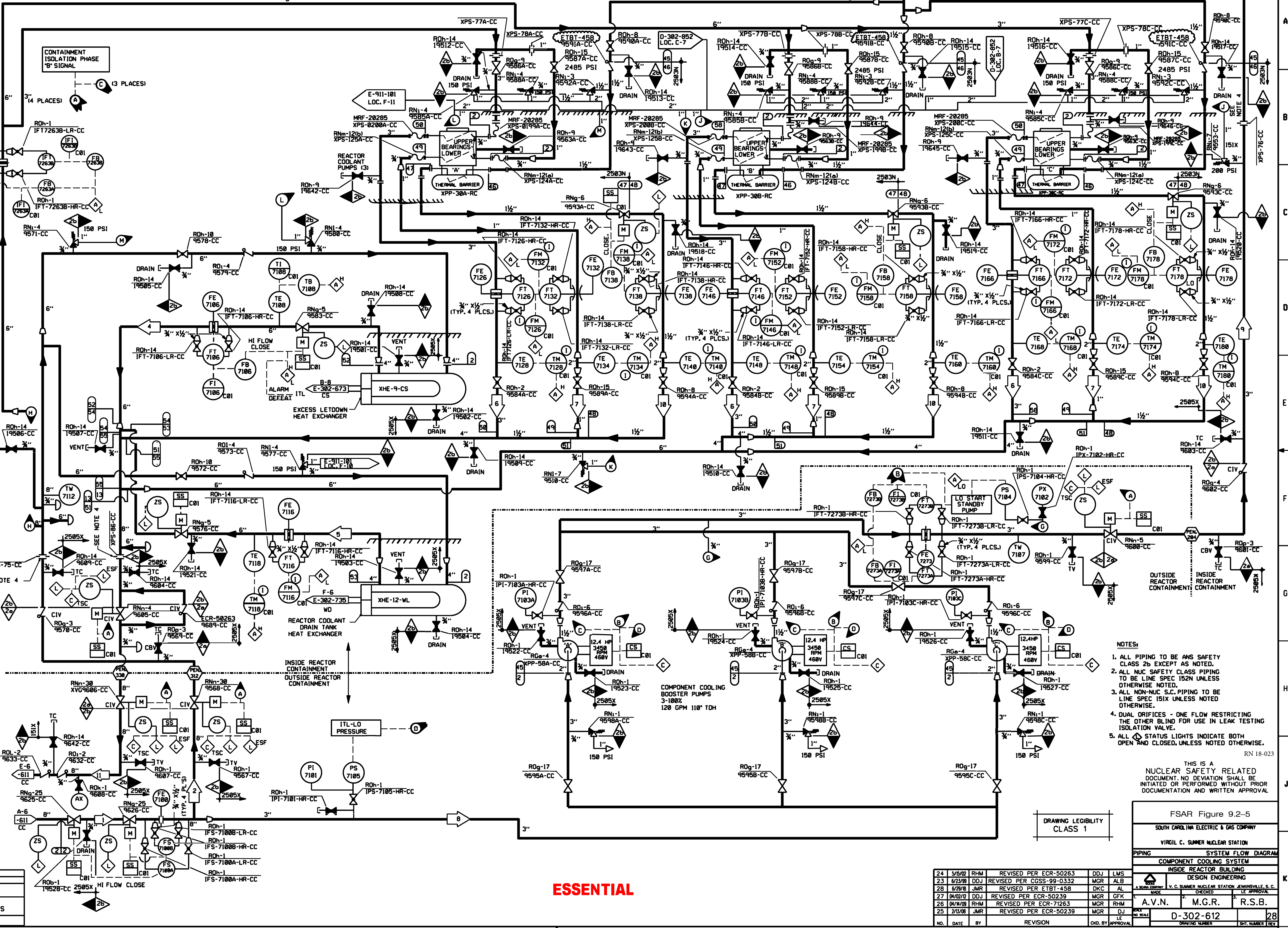
VALVE NUMBERING		
CC	19500	19613
CC	9500	9599
SYSTEM SUFFIX	FIRST NO.	LAST NO.
9691-9699	DWG. E-911-108	

VALVE NUMBERING		
CC	19500	19613
CC	9500	9599
SYSTEM SUFFIX	FIRST NO.	LAST NO.
9691-9699	DWG. E-911-108	

HYDRO TEMP - COLO WATER				
NO.	PSIG	°F	OURA	HY-DRD
46-47	150	168	2405	12
48	150	168	200	12
2-3	120	150	180	12
48-55	120	150	180	12

DESIGN DATA				
NO.	DATE	BY	REVISION	REMARKS
1				

THIS TEMP IS A MAXIMUM EXPECTED FOR 95°F SERVICE WATER TEMP. AND LOSS OF ONE CCW HEAT EXCHANGER DURING PLANT COOL DOWN MODE.

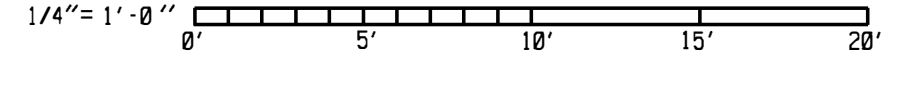


- NOTES:
1. ALL PIPING TO BE ANSI SAFETY CLASS 2b EXCEPT AS NOTED.
 2. ALL NUC SAFETY CLASS PIPING TO BE LINE SPEC 152N UNLESS OTHERWISE NOTED.
 3. ALL NON-NUC S.C. PIPING TO BE LINE SPEC 151X UNLESS NOTED OTHERWISE.
 4. DUAL ORIFICES - ONE FLOW RESTRICTING THE OTHER BLIND FOR USE IN LEAK TESTING ISOLATION VALVE.
 5. ALL STATUS LIGHTS INDICATE BOTH OPEN AND CLOSED, UNLESS NOTED OTHERWISE.

THIS IS A NUCLEAR SAFETY RELATED DOCUMENT. NO DEVIATION SHALL BE INITIATED OR PERFORMED WITHOUT PRIOR DOCUMENTATION AND WRITTEN APPROVAL.

FSAR Figure 9.2-5				
SOUTH CAROLINA ELECTRIC & GAS COMPANY				
VIRGIL C. SUMNER NUCLEAR STATION				
PIPING SYSTEM FLOW DIAGRAM				
COMPONENT COOLING SYSTEM				
INSIDE REACTOR CONTAINMENT BUILDING				
DESIGN ENGINEERING				
CHECKED				
APPROVED				
A.V.N.	M.G.R.	R.S.B.		
D-302-612				

ESSENTIAL



NO.	DATE	BY	REVISION	REVISION
24	5/5/02	RHM	REVISED PER ECR-50263	DOJ LMS
23	6/23/99	DDJ	REVISED PER CGSS-99-0332	MGR ALB
28	6/29/98	JMR	REVISED PER ETBT-458	DKC AL
27	04/02/02	DDJ	REVISED PER ECR-50239	MGR GFK
26	04/01/99	RHM	REVISED PER ECR-71263	MGR RHM
25	2/1/08	JMR	REVISED PER ECR-50239	MGR DJ

RN 18-023

28