

MAX GPM	PSIG	F	BY	REMARKS
1	1887	188	KRC	
2	967	188	KRC	
4	262	88	L45	KRC
5	248	88	125	KRC
6	154	88	145	KRC
7	15	88	145	KRC
8	128	100	128	KRC
9	128	130	128	KRC
10	48	88	145	KRC
11	1887	78	125	KRC

\* THIS TEMP IS A MAXIMUM EXPECTED FOR 95°F SERVICE WATER TEMP. AND LOSS OF ONE CCM HEAT EXCHANGER DURING PLANT COOL DOWN MODE.

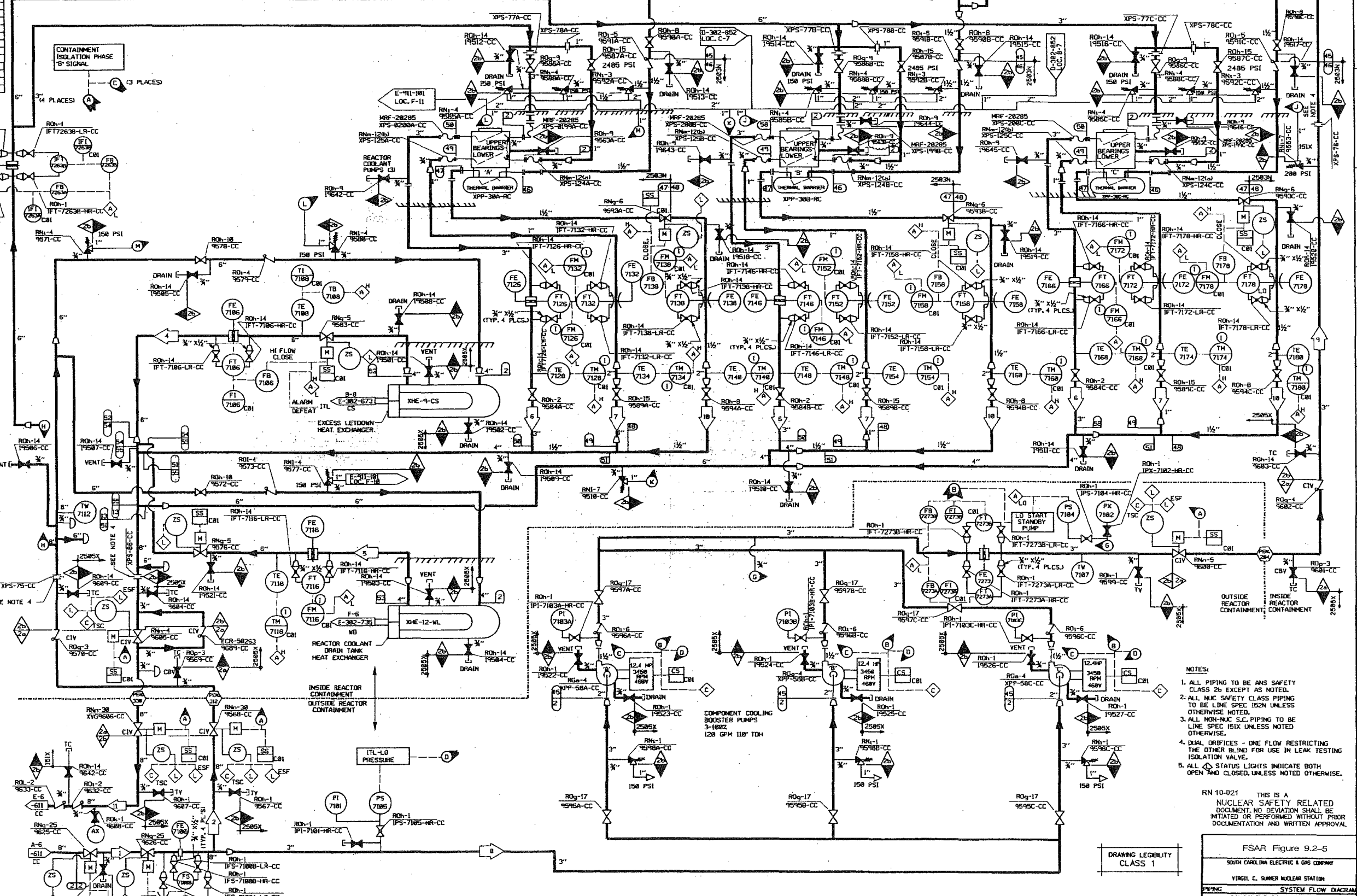
CC	19508	19613
CC	9588	9699

SYSTEM SUPPLY FIRST NO. LAST NO.

VALVE NUMBERING

9691-9699 DWG. E-111-188

NO.	DATE	BY	REVISION	CHKD.	APPROVAL
24	5/5/02	RHM	REVISED PER ECR-50263	DOJ	LMS
23	4/23/00	DOJ	REVISED PER CGSS-99-0332	MGR	ALB
22	10/07/98	JTS	REVISED PER CGSS-98-0424	MGR	MWD
21	10/07/98	JTS	REVISED PER ECR-50239	MGR	GFK
20	4/10/98	RHM	REVISED PER ECR-71263	MGR	RHM
19	3/10/98	JMR	REVISED PER ECR-50239	MGR	DJ



- NOTES:
1. ALL PIPING TO BE ANS SAFETY CLASS 2b EXCEPT AS NOTED.
  2. ALL NUC SAFETY CLASS PIPING TO BE LINE SPEC 152N UNLESS OTHERWISE NOTED.
  3. ALL NON-NUC S.C. PIPING TO BE LINE SPEC 151X UNLESS NOTED OTHERWISE.
  4. DUAL DRIFTERS - ONE FLOW RESTRICTING THE OTHER BLIND FOR USE IN LEAK TESTING ISOLATION VALVE.
  5. ALL STATUS LIGHTS INDICATE BOTH OPEN AND CLOSED, UNLESS NOTED OTHERWISE.

RN 10-021 THIS IS A NUCLEAR SAFETY RELATED DOCUMENT. NO DEVIATION SHALL BE INITIATED OR PERFORMED WITHOUT PRIOR DOCUMENTATION AND WRITTEN APPROVAL.

DRAWING LEGIBILITY CLASS 1

FSAR Figure 9.2-5	
SOUTH CAROLINA ELECTRIC & GAS COMPANY	
YVIGIL C. SUMNER NUCLEAR STATION	
SYSTEM FLOW DIAGRAM	
COMPONENT COOLING SYSTEM	
INSIDE REACTOR BUILDING	
DESIGN ENGINEERING	
V.C. SUMNER NUCLEAR STATION, JONESTOWN, S.C.	
A.V.N.	M.G.R.
R.S.B.	
D-302-612	27