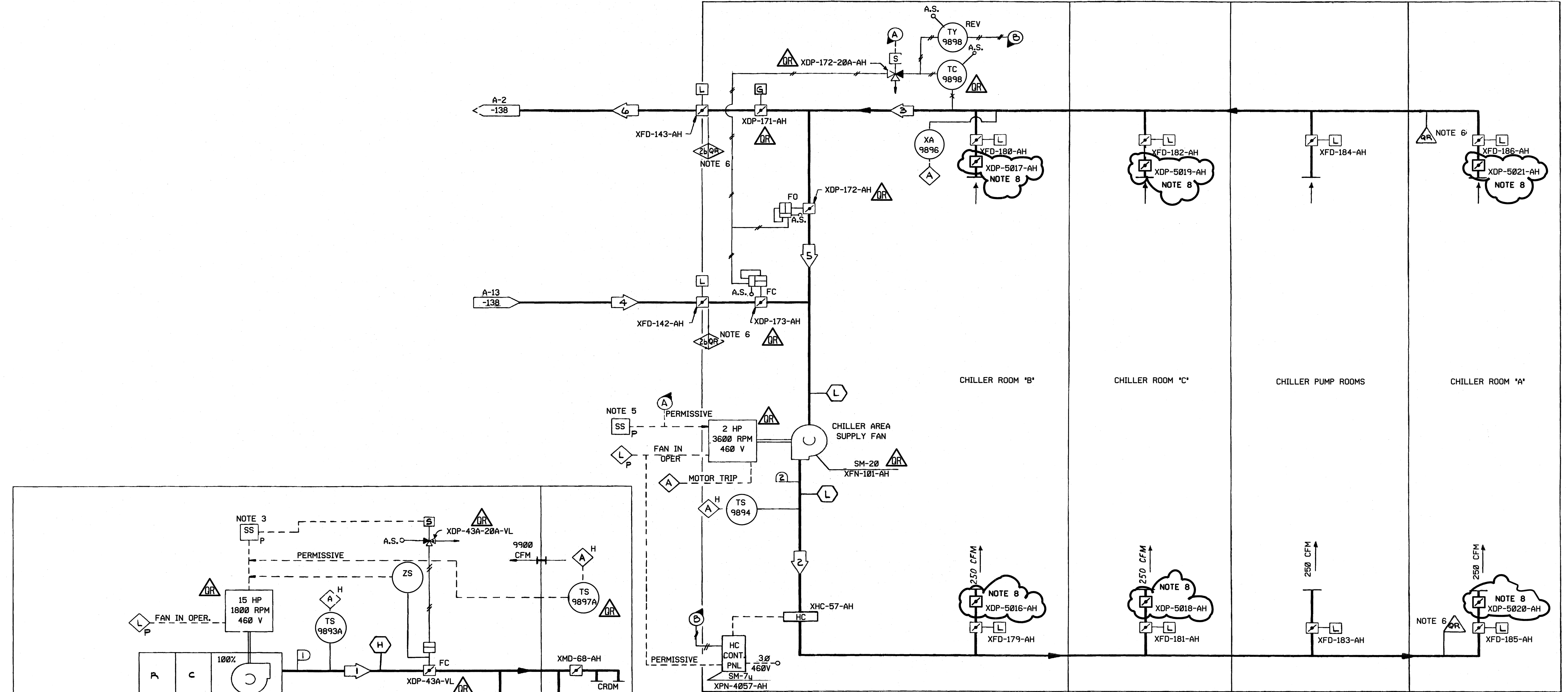


SYSTEM OPERATING DATA

	AIR FLOW CFM	AIR TEMP. ° F
1	9900	54.5
2	1000	65/95
3	1000	65/104
4	1000 TO 0	19/95
5	0 TO 1000	65/85
6	1000 TO 0	65/104

SAFETY CLASS VERIFICATION
 ORIGINATED BY *[Signature]*
 REVIEWED BY *[Signature]*



WATER CHILLER AREA VENTILATION SYSTEM
 INTERMEDIATE BUILDING EL. 412'-0"

- NOTES:**
- EXCEPT WHERE NOTED OTHERWISE ALL ALARMS AND INDICATING LIGHTS ARE LOCATED AT THE HVAC CONTROL BOARD (XCP-6210-AH) IN THE MAIN CONTROL ROOM.
 - (f) INDICATES INSTRUMENT IS FURNISHED WITH EQPT.
 - CRDM SWGR ROOM AIR HANDLING UNIT CONTROL SWITCHES AND MOTOR STATUS LIGHTS ARE LOCATED ON LOCAL PANEL XPN-5134-VL.
 - FOR SAFETY CLASSIFICATION OF INSTRUMENTATION, SEE THE INSTRUMENT LIST.
 - WATER CHILLER AREA VENTILATING FAN CONTROL SWITCH AND MOTOR STATUS LIGHTS ARE LOCATED ON LOCAL PANEL XPN-5193-AH.
 - ALL DUCTWORK IDENTIFIED AS QR TO BE PER TRP-4 & TRP-12.
 - ALL EQUIPMENT IDENTIFIED AS QR TO BE PER TRP-31, EXCEPT THE FOLLOWING:
 - HELB DAMPERS XDP-5016-AH THRU XDP-5021-AH ARE QR PER TRP-12.
 - FAN AND BALANCING (AIR OPERATED) DAMPERS IN THE CHILLER ROOMS ARE QR PER TRP-12 & TRP-31.
 - BEFORE PROPPING THE CHILLER ROOM DOOR OPEN FOR EXTENDED PERIODS OF TIME ENSURE HELB DAMPERS IN THAT ROOM ARE CLOSED.
- 'QUALITY RELATED - FABRICATION, ERECTION, AND INSPECTION PER SCE&G QRP FOR HVAC DUCTS AND SUPPORTS.'

ALL SYSTEM COMPONENTS ARE NON NUCLEAR SAFETY, EXCEPT AS NOTED.

ESSENTIAL

DRAWING CLASS LEGIBILITY 1

THIS IS A NUCLEAR SAFETY RELATED DOCUMENT. NO DEVIATION SHALL BE INITIATED OR PERFORMED WITHOUT PRIOR DOCUMENTATION AND WRITTEN APPROVAL

FSAR Figure 9.4-14

SOUTH CAROLINA ELECTRIC & GAS COMPANY

VIRGIL C. SUMNER NUCLEAR STATION

BUILDING SERVICE SYSTEM FLOW DIAGRAM
 CRDM SWITCHGEAR ROOM COOLING SYSTEM
 AND WATER CHILLER AREA VENTILATION SYSTEM

DESIGN ENGINEERING

NO.	DATE	BY	REVISION	CHKD. BY	APPROVAL
12	2/13/83	RHM	REVISED PER ECR-50585	MGR	RS
11	10/03/01	DDJ	REVISED PER ECR-70028	MGR	DDJ
10	08/03/83	AVN	REVISED PER MRF-34054	JHR	DJC
9	04/22/83	JMH	REVISED PER CGSS-93-0328	RHM	GAA

NO. DATE BY REVISION

NO. DATE BY REVISION

D-912-139

DRAWING NUMBER

SHT. NUMBER

REV

SYSTEM DESIGN DATA

	AIR FLOW CFM	AIR TEMP. ° F
1	9900	54.5
2	1000	65/95

