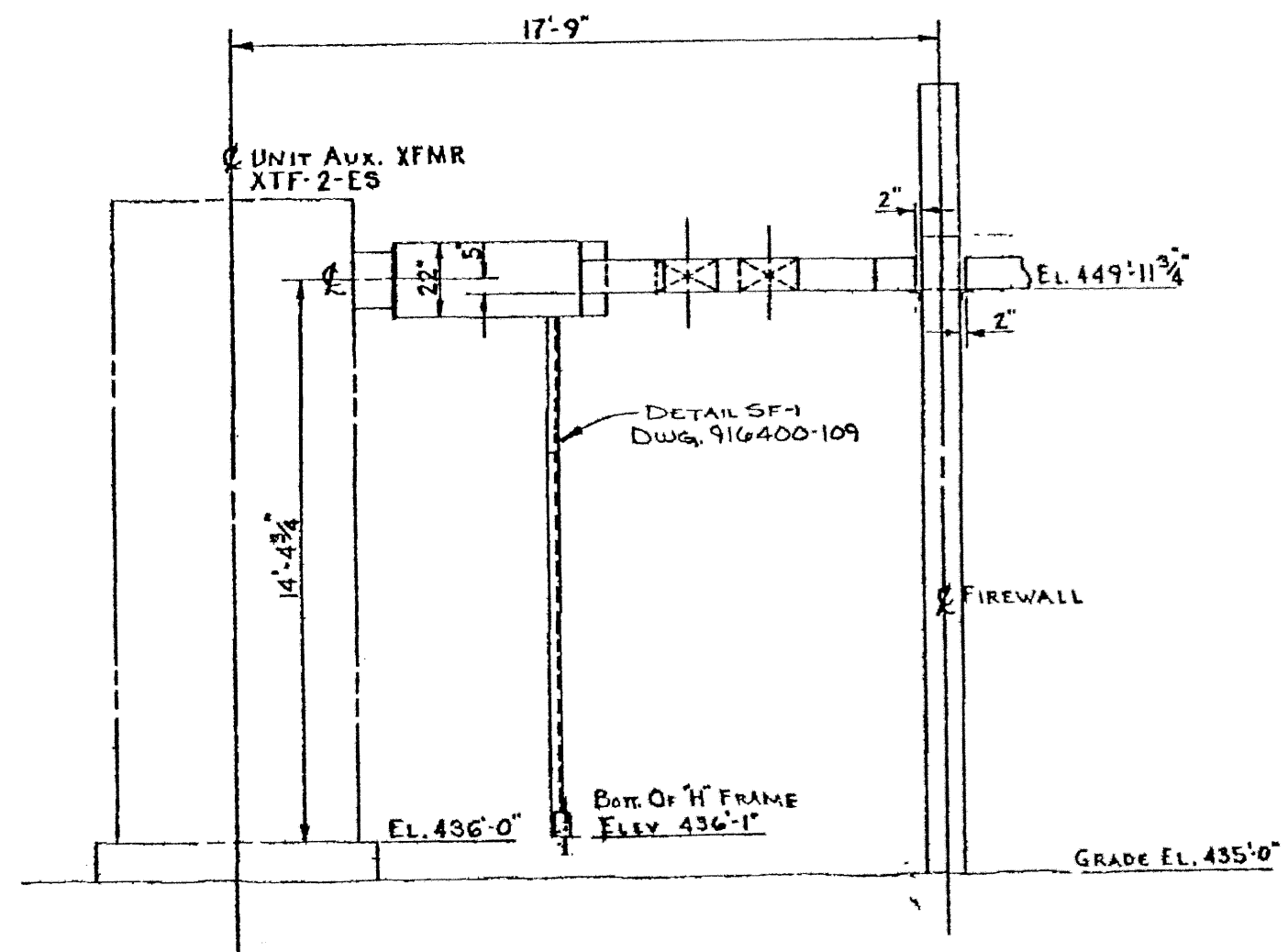
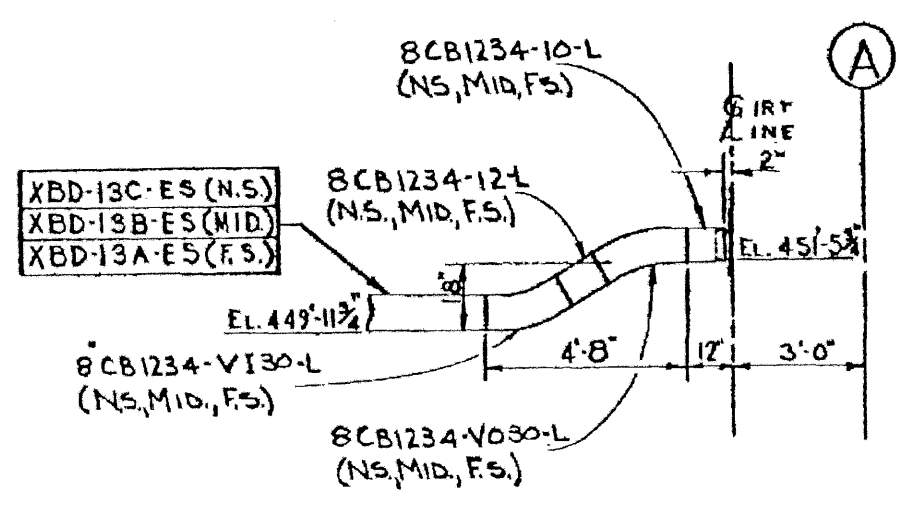


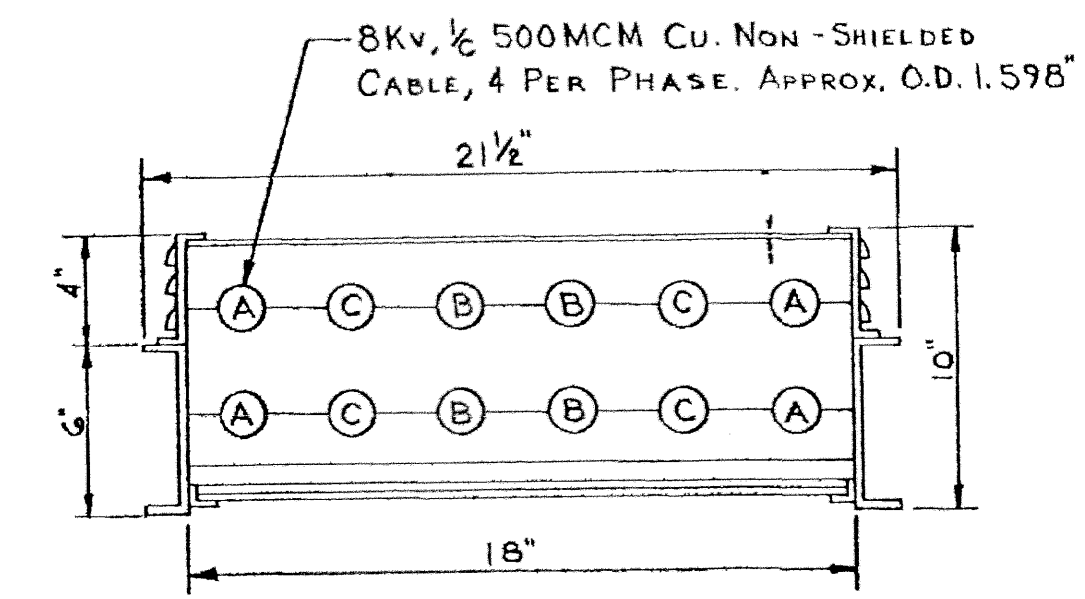
SEE DWG. 916400-108 FOR ANCHOR BOLT PLAN



SECTION 'D-D'



SECTION 'E-E'



2000A 8KV 3Ø-3W SYSTEM  
 CATALOG No BCB1234-( )-L  
 APPROX. WT. PER FT. 44 LBS.

SOUTH CAROLINA ELECTRIC & GAS CO.  
 VIRGIL C. SUMNER NUCLEAR STATION UNIT No. 1

APPROVED CHECKING IS ONLY FOR GENERAL DESIGN AND GENERAL DIMENSIONS SET FORTH IN CONTRACT DOCUMENTS AND DOES NOT RELIEVE CONTRACTOR FROM HIS OBLIGATION AS TO DETAIL WORKMANSHIP AND GUARANTEES.

APPROVED AS NOTED

RETURNED FOR CORRECTION

GILBERT ASSOCIATES, INC.  
 BY R.T. STRAUSSER  
 B/M ITEM No. ED-1 DATE 5/19/77

FSAR Figure 8.3-0a

OUTDOOR CABLE BUS LAYOUT & SECTIONS  
 UNIT AUXILIARY TRANSFORMER AREA  
 HUSKY PRODUCTS INC.  
 916400-101

NO.	DATE	BY	REVISION	MGR	DDJ	LE	1MS-33-008	3
3	10/10/78	DDJ	REVISED PER ECR-70028	MGR	DDJ	LE	1MS-33-008	3
DRAWING NUMBER				SIT. NUMBER		REV		

