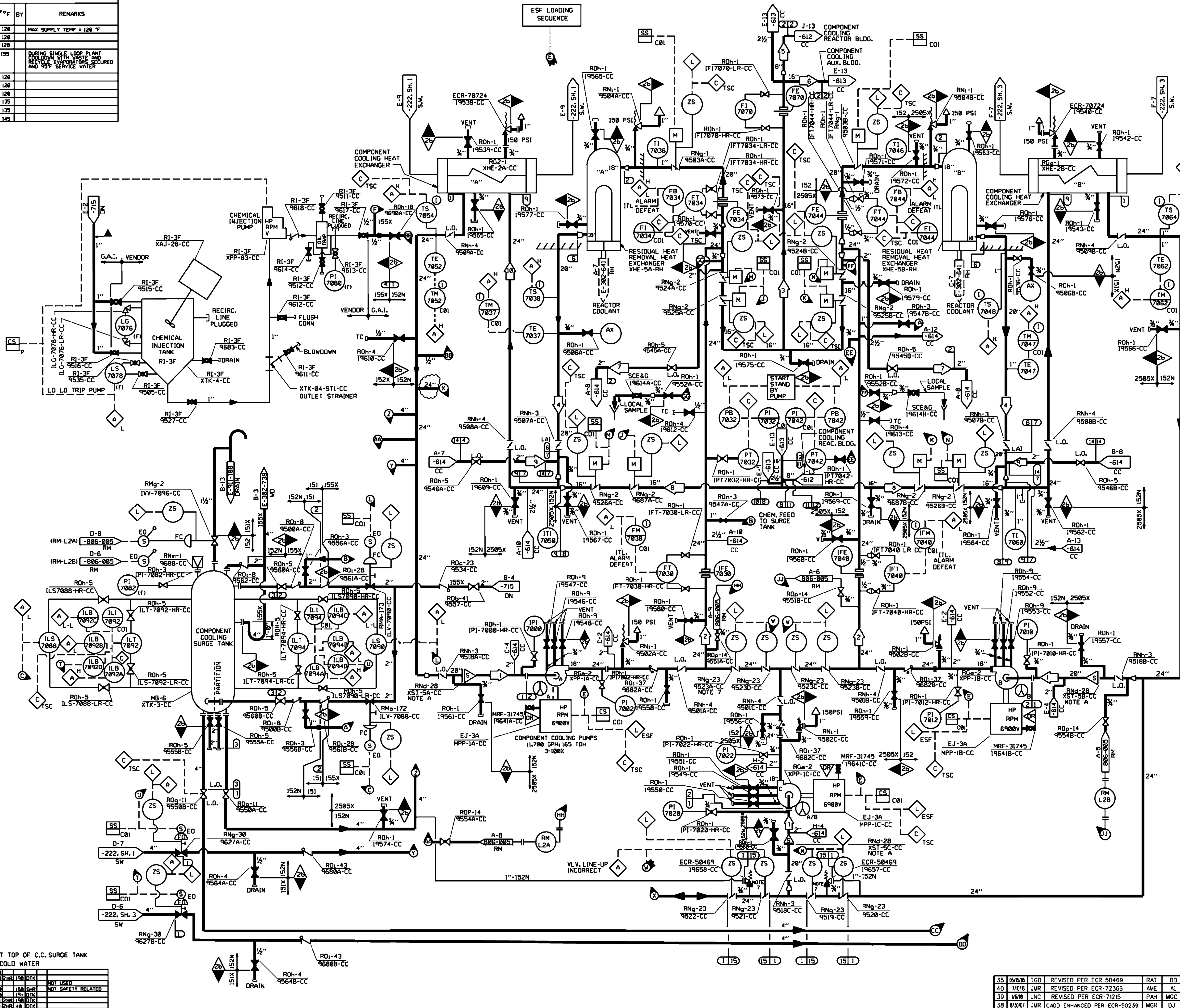


SYSTEM DATA				
ID	MAX. GPM	PSIG	# OF	REMARKS
1	11,915	30	120	MAX SUPPLY TEMP + 120 °F
2	11,860	195	120	
3	6,145	180	120	
4	5,600	70	195	DURING SINGLE LOOP PLANT SHUTDOWN, V.L.V. W/TS AND REACTOR COOLANT SYSTEMS SECURED AND OFF SERVICE WATER
5	1,807	100	120	
6	4,950	100	120	
7	48	100	120	
8	6,145	70	125	
9	48	70	125	
10	11,860	70	145	



- NOTES:
- ALL NUC. SAFETY CLASS PIPING TO BE LINE SPEC. 152N.
  - ALL NON-NUC. SAFETY CLASS PIPING EXCEPT THAT SUPPLIED BY CHEM. INJ. SYSTEM VENDOR, OR AS INDICATED OTHERWISE, TO BE LINE SPEC. 151X.
  - DENOTES MISSION "DUO-CHEK" OR EQUAL.
  - ALL PIPING TO BE ANS. SAFETY CLASS 2B EXCEPT AS NOTED.
  - ITEMS DESIGNATED WITH (F) ARE FURNISHED BY EQUIP. SUPPLIER.
  - ALL ◊ STATUS LIGHTS INDICATE BOTH OPEN AND CLOSED UNLESS NOTED OTHERWISE.
  - BENCH SET PRESSURE OF 120 PSIG + 30 PSIG BACK PRESSURE = DESIGN SET PRESSURE OF 150 PSIG.
- NOTE:  
A. TEMPORARY STRAINER FOR SYSTEM CLEAN UP. TO BE REMOVED AFTER FINAL FLUSH.

THIS IS A NUCLEAR SAFETY RELATED DOCUMENT. NO DEVIATION SHALL BE INITIATED OR PERFORMED WITHOUT PRIOR DOCUMENTATION AND WRITTEN APPROVAL.

FSAR FIGURE 9.2-4	
SOUTH CAROLINA ELECTRIC & GAS COMPANY	
VIRGIL C. SUMNER NUCLEAR STATION	
PIPING SYSTEM FLOW DIAGRAM	
COMPONENT COOLING	

NO.	DATE	BY	REVISION	CHKD. BY	APPROVAL
35	05/05/05	TGB	REVISED PER ECR-50469	RAT	BB
40	7/01/05	JMR	REVISED PER ECR-72366	AME	AL
39	10/09/05	JNC	REVISED PER ECR-71215	PAH	MCC
38	01/07/05	JMR	CADD ENHANCED PER ECR-50239	MGR	DJ
37	03/05/05	JMR	REVISED PER ECR-70724	MGR	MC
36	08/08/05	JTS	REVISED PER ECR-50469	MGR	AME

•• CONDITION AT TOP OF C.C. SURGE TANK HYDRO TEMP - COLD WATER

ID	MAX. GPM	PSIG	# OF	REMARKS
15	30	150	150	
16	120	150	150	NOT USED
17	120	150	150	NOT SAFETY RELATED
18	120	150	150	
19	120	150	150	
20	120	150	150	
21	120	150	150	
22	120	150	150	
23	120	150	150	
24	120	150	150	
25	120	150	150	
26	120	150	150	
27	120	150	150	
28	120	150	150	
29	120	150	150	
30	120	150	150	
31	120	150	150	
32	120	150	150	
33	120	150	150	
34	120	150	150	
35	120	150	150	
36	120	150	150	
37	120	150	150	
38	120	150	150	
39	120	150	150	
40	120	150	150	
41	120	150	150	
42	120	150	150	
43	120	150	150	
44	120	150	150	
45	120	150	150	
46	120	150	150	
47	120	150	150	
48	120	150	150	
49	120	150	150	
50	120	150	150	

ESSENTIAL