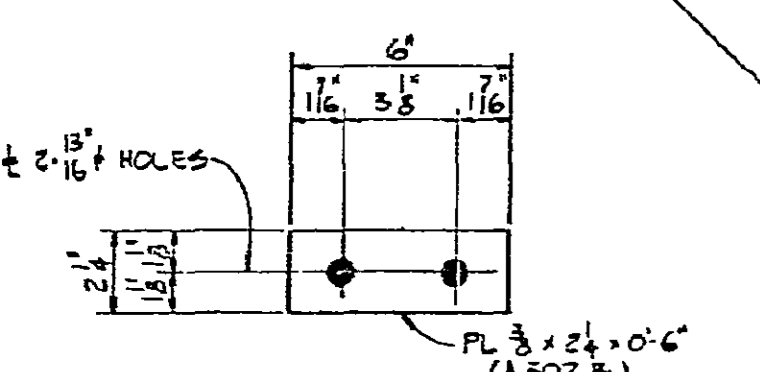
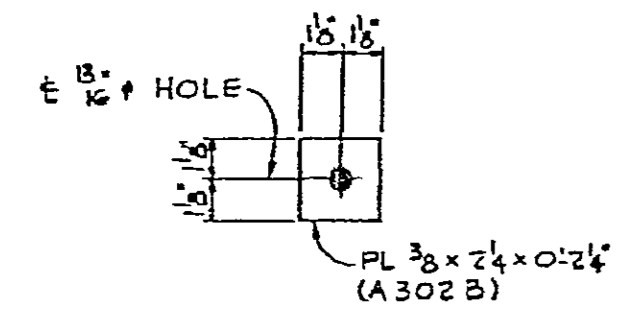


RELEASED FOR DETAILING & FABRICATION 7/11/75

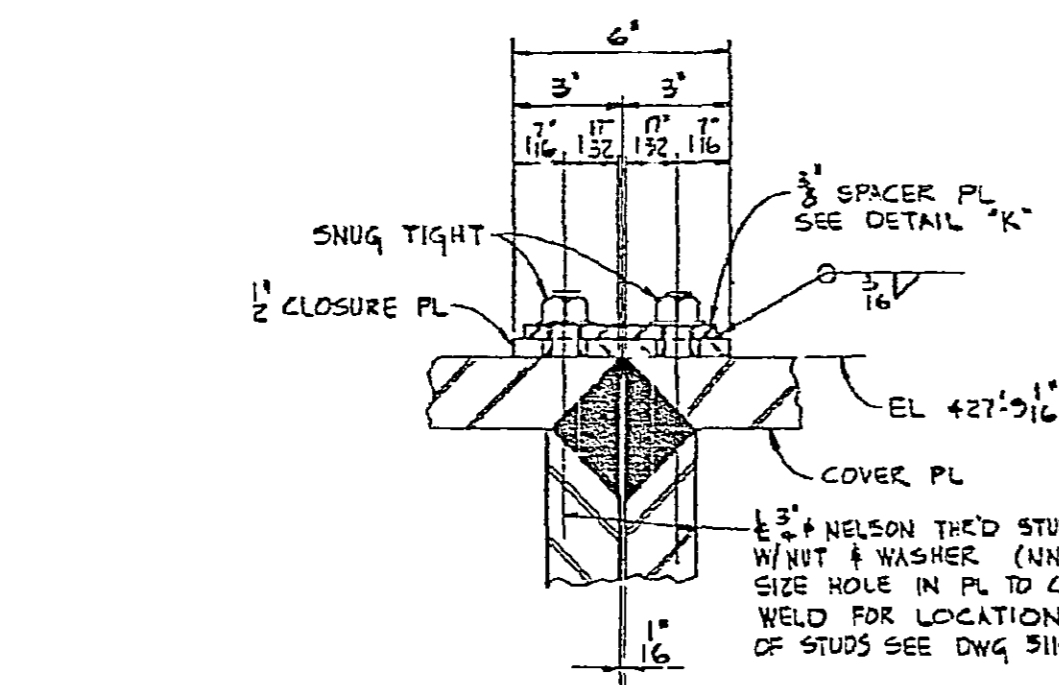


- 6 REQD - BAFFLE 'A'
- 6 REQD - BAFFLE 'B'
- 6 REQD - BAFFLE 'C'
- 6 REQD - BAFFLE 'D'
- 6 REQD - BAFFLE 'E'
- 6 REQD - BAFFLE 'F'

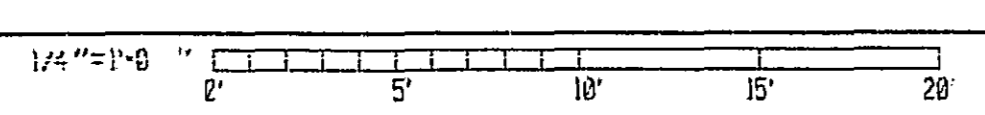


- 6 REQD - BAFFLE 'A'
- 6 REQD - BAFFLE 'C'
- 9 REQD - BAFFLE 'B'
- 6 REQD - BAFFLE 'D'
- 6 REQD - BAFFLE 'E'
- 6 REQD - BAFFLE 'F'

SECTIONAL PLAN AT ELEV. 426'-9"



- NOTES:-
1. NUCLEAR SAFETY CLASS (NSC). FOR ITEMS SPECIFICALLY MARKED NON-NUCLEAR SAFETY (NNS) SPECIFICATION SP-701-4481-00 IS NOT APPLICABLE.
 2. QUALITY ASSURANCE PROGRAM REQUIREMENTS Q4-1. SEE Q41 SPECIFICATION "QUALITY ASSURANCE PROGRAM REQUIREMENTS" SP-701-4481-00.
 3. MATERIAL, WELDING, FABRICATION AND TOLERANCES OF SPECIAL STEEL FOR REACTOR BUILDING, TO BE IN ACCORDANCE WITH Q41 SPECIFICATION SPECIAL STEEL FOR REACTOR BUILDING SP-023-04481-008.
 4. ALL STRUCTURAL STEEL AS SHOWN ON THIS DRAWING SHALL BE MADE OF ASTM A302 GRADE B MATERIAL, WITH SUPPLEMENTAL REQUIREMENT TO ASTM A302, S1, S2 & S4 UNLESS NOTED OTHERWISE.
 5. 20% MAGNETIC PARTICLE TESTING OF WELDS ON RANDOM SELECTED BASIS WILL BE REQUIRED AS ADVISED BY THE ENGINEER.
 6. ALL EXPOSED CARBON STEEL SURFACES TO BE PAINTED IN ACCORDANCE WITH Q41 SPECIFICATION, "PAINTING STEEL-INSIDE REACTOR BUILDING" SP-713-4481-00.
 7. ALL FULL PENETRATION GROOVE WELDS SHALL BE 100% ULTRASONICALLY INSPECTED IN ACCORDANCE WITH ASTM E1254-74 "ULTRASONIC CONTACT EXAMINATION OF WELDS, RECOMMENDED PRACTICE FOR".
 8. THE ANGLE OF THE PREPARATION GROOVE SHALL BE IN ACCORDANCE WITH THE WELDING PROCESS USED AND SHALL BE SUBMITTED TO THE ENGINEER FOR APPROVAL.
 9. ALL WELDS INDICATED F.F. SHALL BE FULL PENETRATION AIR WELDS INDICATED P.F. SHALL BE PARTIAL PENETRATION.



THIS IS A NUCLEAR SAFETY RELATED DOCUMENT. NO DEVIATION SHALL BE INITIATED OR PERFORMED WITHOUT PRIOR DOCUMENTATION AND WRITTEN APPROVAL.

FSAR Figures 6.2-65
SOUTH CAROLINA ELECTRIC & GAS COMPANY
VPRC, C. SAMPNER NUCLEAR STATION
REACTOR BUILDING
PIPE SLEEVES & LINER PLATE

SECTIONAL PLANS	SECTIONAL PLANS
DESIGN ENGINEERING	SECTIONAL PLANS
DDJ	MGR
DDJ	DDJ
REVISED PER ECR-70388	MGR
DATE	BY
REVISION	DATE
E-511-219	