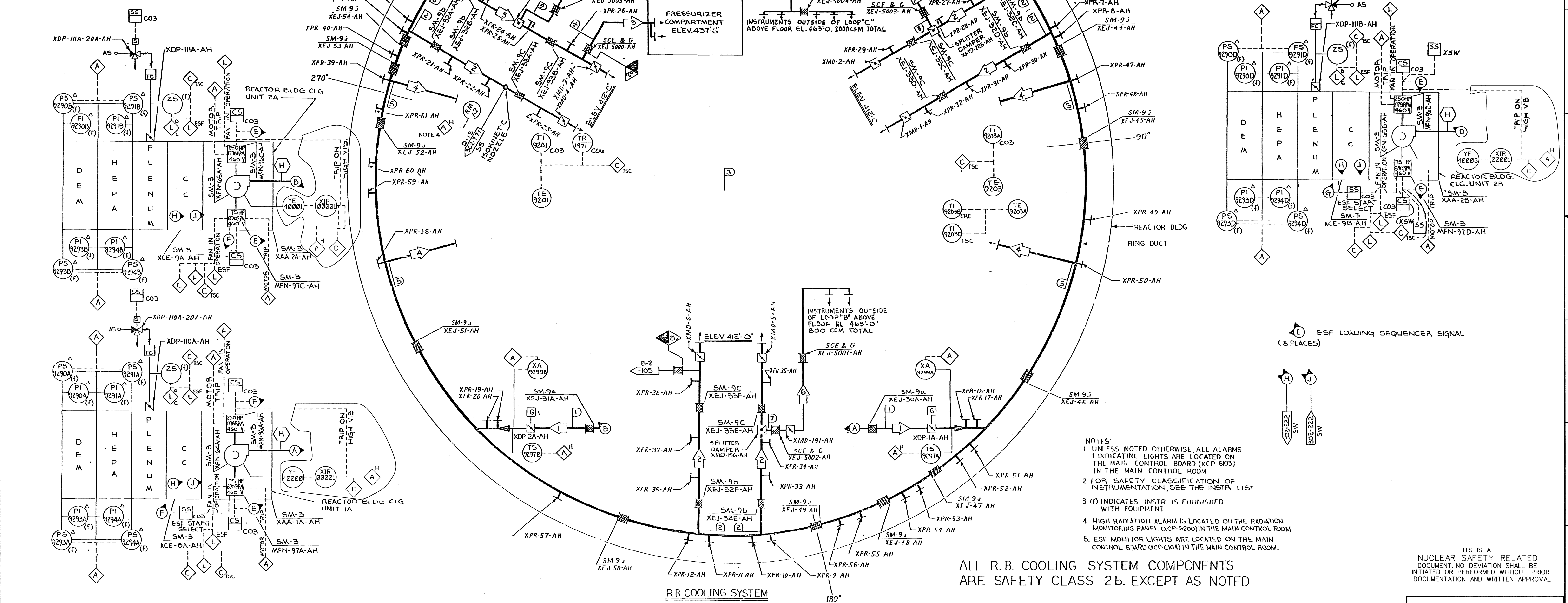


SYSTEM OPERATING DATA

ACFM	AIR TEMP
1 123,000	100
2 58,160	100
3 5,200	100
4 5,000	100
5 58,200	100
6 800	100
7 2,000	100
8 3,000	100

SAFETY CLASS VERIFICATION

ORIGINATED BY 9/17/94 W. G. STELLER
REVIEWED BY 9/17/94 W. G. STELLER



ACFM	AIR TEMP	810	540	216
9 3,000	100	810	540	216
8 2,000	100	810	540	216
7 800	100	810	540	216
6 5,200	100	19,140	16,000	17,000
5 5,000	100	16,000	17,000	20,540
4 5,200	100	17,000	20,540	19,500
3 367,000	120	19,500	17,000	16,000
2 58,160	100	16,000	17,000	19,500
1 123,000	100	19,500	17,000	16,000

SYSTEM DESIGN DATA

NORMAL EMERGENCY

ALL R.B. COOLING SYSTEM COMPONENTS ARE SAFETY CLASS 2b. EXCEPT AS NOTED

- NOTES:
- UNLESS NOTED OTHERWISE, ALL ALARMS INDICATING LIGHTS ARE LOCATED ON THE MAIN CONTROL BOARD (XCP-603) IN THE MAIN CONTROL ROOM
 - FOR SAFETY CLASSIFICATION OF INSTRUMENTATION, SEE THE INSTR. LIST
 - (f) INDICATES INSTR IS FURNISHED WITH EQUIPMENT
 - HIGH RADIATION ALARM IS LOCATED ON THE RADIATION MONITORING PANEL (XCP-6200) IN THE MAIN CONTROL ROOM
 - ESF MONITOR LIGHTS ARE LOCATED ON THE MAIN CONTROL BOARD (XCP-604) IN THE MAIN CONTROL ROOM.

THIS IS A NUCLEAR SAFETY RELATED DOCUMENT. NO DEVIATION SHALL BE INITIATED OR PERFORMED WITHOUT PRIOR DOCUMENTATION AND WRITTEN APPROVAL

FSAR Figure 6.2-49		
SOUTH CAROLINA ELECTRIC & GAS COMPANY		
VIRGIL C. SUMNER NUCLEAR STATION		
BUILDING SERVICE SYSTEM FLOW DIAGRAM		
R.B. COOLING SYSTEM		
DESIGN ENGINEERING		
21	11/20/09	RHM
20	10/02/09	DDJ

NO.	DATE	BY	REVISION	CKD.	BY APPROVAL
21	11/20/09	RHM	REVISED PER ECR-50683	RHM	MM
20	10/02/09	DDJ	REVISED PER ECR-70028	MGR	DDJ
NO SCALE			D-912-102		
DRAWING NUMBER			SHT. NUMBER		
			21		