

| SYSTEM DATA |      |    |    |         |  |
|-------------|------|----|----|---------|--|
| CFM         | PSIG | "F | BY | REMARKS |  |
| 1           | 0.5  | 3  | 90 | DJK     |  |
| 2           | 100  | 3  | 90 | DJK     |  |
| 3           | 600  | 3  | 90 | DJK     |  |
| 4           |      |    |    |         |  |

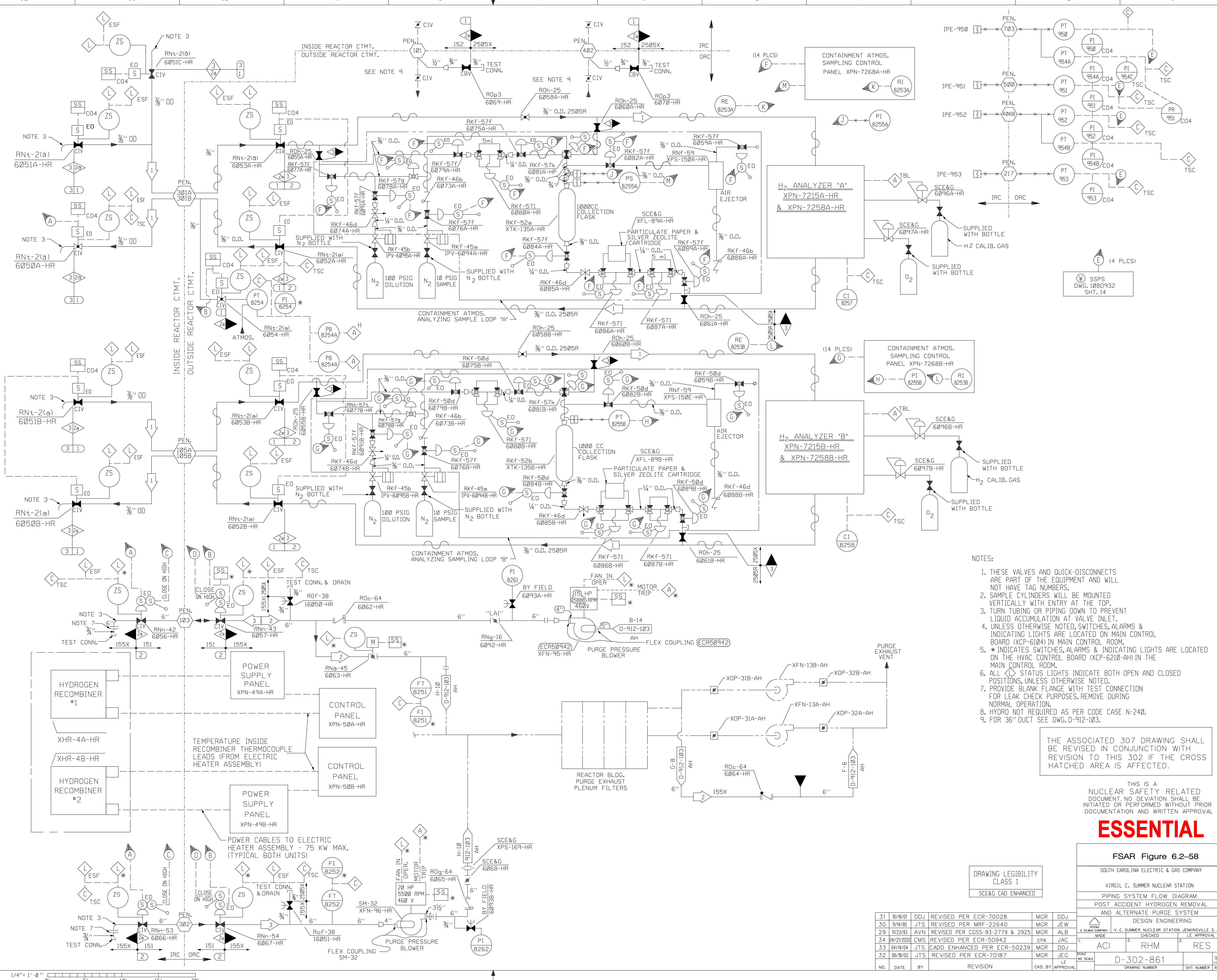
| SAFETY CLASS VERIFICATION |             |  |
|---------------------------|-------------|--|
| ORIGINATED BY             | REVIEWED BY |  |
|                           |             |  |

| HR          | 16050     | 16051    |
|-------------|-----------|----------|
| HR          | 6050      | 6097     |
| SYS. SUFFIX | FIRST NO. | LAST NO. |
|             |           |          |

NEXT NO. USED P

| HYDROTEST TEMP. 40°F MIN |      |     |      |     |          |       |      |    |         |
|--------------------------|------|-----|------|-----|----------|-------|------|----|---------|
| #                        | PSIG | "F  | PSIG | "F  | DURATION | HYDRO | CHKD | BY | REMARKS |
| 3                        | ATM  | 120 | 66   | 283 | < 1/2    |       |      |    | NOTE 8  |
| 2                        | ATM  | 120 | 66   | 190 | < 1/2    |       |      |    | 85      |
| 1                        | ATM  | 120 | 66   | 283 | < 1/2    |       |      |    | 85      |
|                          |      |     |      |     |          |       |      |    |         |

DESIGN DATA



- NOTES:
1. THESE VALVES AND QUICK-DISCONNECTS ARE PART OF THE EQUIPMENT AND WILL NOT HAVE TAG NUMBERS.
  2. SAMPLE CYLINDERS WILL BE MOUNTED VERTICALLY WITH ENTRY AT THE TOP.
  3. TURN TUBING OR PIPING DOWN TO PREVENT LIQUID ACCUMULATION AT VALVE INLET.
  4. UNLESS OTHERWISE NOTED, SWITCHES, ALARMS & INDICATING LIGHTS ARE LOCATED ON MAIN CONTROL BOARD (XCP-6104) IN MAIN CONTROL ROOM.
  5. \* INDICATES SWITCHES, ALARMS & INDICATING LIGHTS ARE LOCATED ON THE HVAC CONTROL BOARD (XCP-6210-AH) IN THE MAIN CONTROL ROOM.
  6. ALL  $\diamond$  STATUS LIGHTS INDICATE BOTH OPEN AND CLOSED POSITIONS, UNLESS OTHERWISE NOTED.
  7. PROVIDE BLANK FLANGE WITH TEST CONNECTION FOR LEAK CHECK PURPOSES. REMOVE DURING NORMAL OPERATION.
  8. HYDRO NOT REQUIRED AS PER CODE CASE N-240.
  9. FOR 36" DUCT SEE DWG. D-912-103.

THE ASSOCIATED 307 DRAWING SHALL BE REVISED IN CONJUNCTION WITH REVISION TO THIS 302 IF THE CROSS HATCHED AREA IS AFFECTED.

THIS IS A NUCLEAR SAFETY RELATED DOCUMENT. NO DEVIATION SHALL BE INITIATED OR PERFORMED WITHOUT PRIOR DOCUMENTATION AND WRITTEN APPROVAL.

**ESSENTIAL**

DRAWING LEGIBILITY CLASS 1  
SCE&G CAD ENHANCED

| FSAR Figure 6.2-58  |     |                                 |          |
|---|-----|---------------------------------|----------|
| SOUTH CAROLINA ELECTRIC & GAS COMPANY                     |     |                                 |          |
| VIRGIL C. SUMNER NUCLEAR STATION                          |     |                                 |          |
| PIPING SYSTEM FLOW DIAGRAM                                |     |                                 |          |
| POST ACCIDENT HYDROGEN REMOVAL AND ALTERNATE PURGE SYSTEM |     |                                 |          |
| DESIGN ENGINEERING  |     |                                 |          |
| DATE  | BY  | REVISION                        | APPROVAL |
| 31 10/01/01   | DDJ | REVISED PER ECR-70028           | MGR DDJ  |
| 30 10/14/95   | JTS | REVISED PER MRF-22640           | MGR JEW  |
| 29 10/23/93   | AVN | REVISED PER CGSS-93-2779 & 2925 | MGR ALB  |
| 34 04/21/2000   | CMS | REVISED PER ECR-50942           | chk JAC  |
| 33 04/14/04   | JTS | CADD ENHANCED PER ECR-50239     | MGR DDJ  |
| 32 06/18/02   | JTS | REVISED PER ECR-70187           | MGR JEG  |

| NO. | DATE       | BY  | REVISION                        | CKD. | BY  | APPROVAL |
|-----|------------|-----|---------------------------------|------|-----|----------|
| 31  | 10/01/01   | DDJ | REVISED PER ECR-70028           | MGR  | DDJ |          |
| 30  | 10/14/95   | JTS | REVISED PER MRF-22640           | MGR  | JEW |          |
| 29  | 10/23/93   | AVN | REVISED PER CGSS-93-2779 & 2925 | MGR  | ALB |          |
| 34  | 04/21/2000 | CMS | REVISED PER ECR-50942           | chk  | JAC |          |
| 33  | 04/14/04   | JTS | CADD ENHANCED PER ECR-50239     | MGR  | DDJ |          |
| 32  | 06/18/02   | JTS | REVISED PER ECR-70187           | MGR  | JEG |          |

DRAWING NUMBER: D-302-861  
SHEET NUMBER: 34