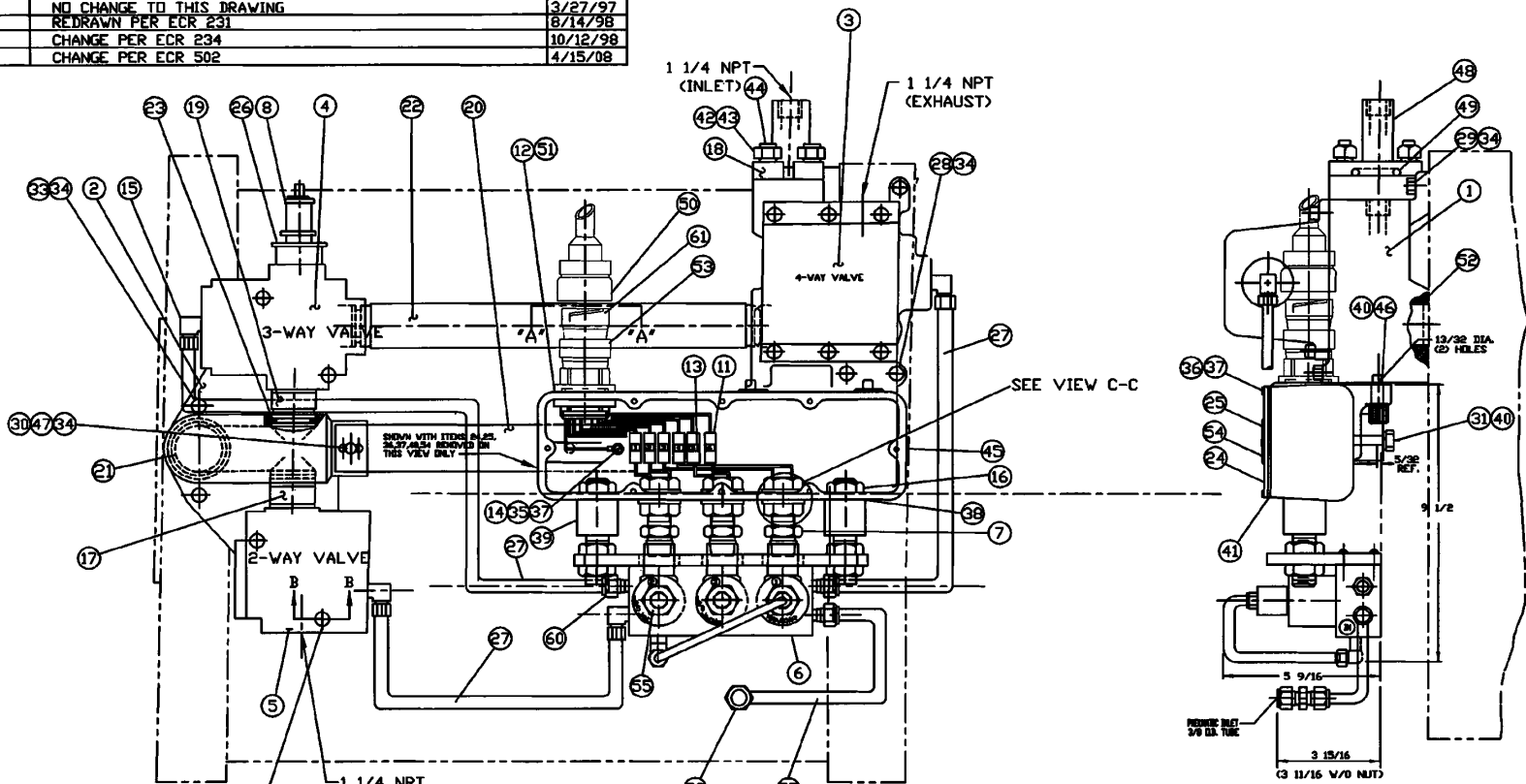
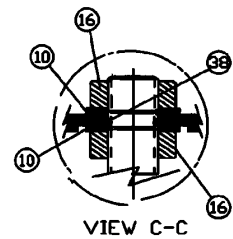
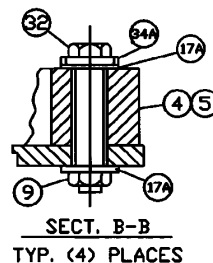
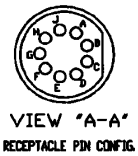


REV	CHANGE DETAIL	DATE
1	ITEM #40 WAS 102-218	1/20/89
2	REDRAWN-MOVED PARTS LIST	4/11/90
3	ADDED SECTION "B-B"	8/9/91
4	ADD TORQUE CHART (ECR# 94)	11/25/92
5	NO CHANGE TO THIS DRAWING	3/27/97
6	REDRAWN PER ECR 231	8/14/98
7	CHANGE PER ECR 234	10/12/98
8	CHANGE PER ECR 502	4/15/08

ITEM No.	TORQUE
16, 28 29, 30 31, 33, 46	25 FT.-LBS
32	15 FT.-LBS
42	20 FT.-LBS
35 36, 59	30 IN.-LBS



FUNCTION	SOL.	VALVE	WIRE	HOOK-UP	VOLTS
MAIN AC VALVE	1	C	3		180V 60Hz
EXERCISE VALVE	3	E	5		180V 60Hz
MAIN DC VALVE	2	A	1		125VDC
		B	2		
		G		NOT USED	
		H			
		J			



AS BUILT
450249440

STATUS: Release
STATUS DATE: 10/21/2014
DS APPROVED: KASCHIZ
VER: AB REV: 01 SIZE: A

- NOTES:
1. ALLOWABLE FASTENER TENSION TOL. ±5%.
 2. TORQUE FASTENERS TO NORMAL VALUES LISTED.
 3. TORQUE 4-WAY VALVE RETAINER SCREWS TO 10 FT.-LBS.

VERSIONS/REVISIONS BY N.P.P.D.				
NO.	DESCRIPTION	DFT	DATE	ENG
AB/01	DR-2014-0255	DLR	4/8/14	KASCHIZ

9	941	1-12-12	-	MoB	1-11-12	
8	502	BJS	4/15/08	-	JFM	4/15/08
7	234	RAC	10/15/98	MAC10/15/98	NJK10/15/98	
6	231	DB	8/25/98	MACB/24/98	NJKB/24/98	
REV.	ECR	APPROVED	CHECKED	DRAWN		
RALPH A. HILLER COMPANY						
6005 ENTERPRISE DRIVE EXPORT PA. 15632						
SHEET 4 OF 6			SCALE: N. T. S.			
TITLE: 20 X 5 MSIV ACTUATOR						
DRAWING NUMBER: SA-A085						