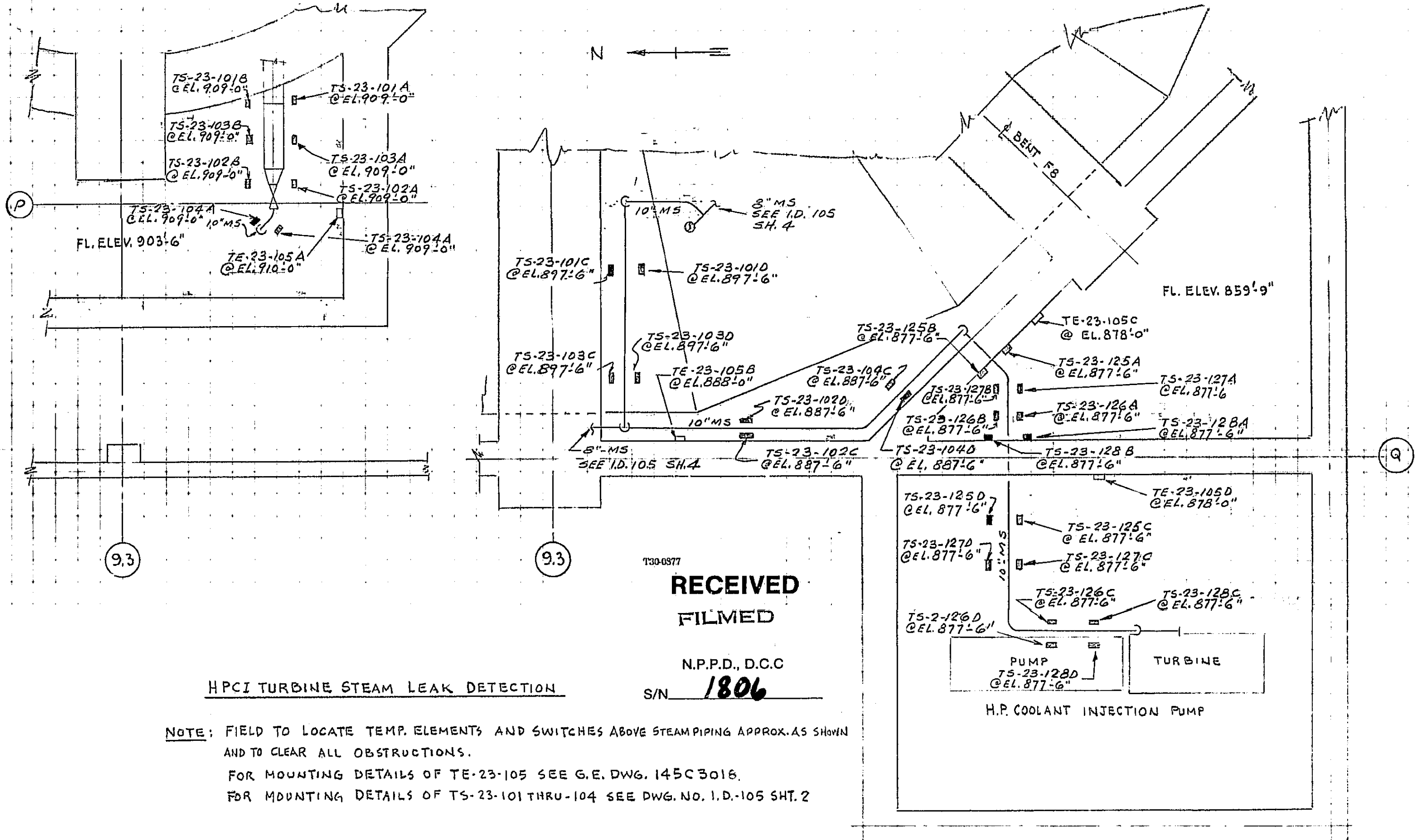


BY: K.M.L. DATE: _____
 CHKD. BY: _____ DATE: _____

SUBJECT: NEBRASKA PUBLIC POWER DISTRICT SHEET NO. 6 OF 7
 COOPER NUCLEAR STATION JOB NO. 2520-02
 INSTALLATION DETAILS - TEMPERATURE DETECTORS FOR NUCLEAR BOILER SYSTEMS LEAK DETECTION

REV. No. 7

IL-E-70-3 SHT. NO. 107 E
 DWG. NO. I.D.-105 SHEET-G



HPCI TURBINE STEAM LEAK DETECTION

NOTE: FIELD TO LOCATE TEMP. ELEMENTS AND SWITCHES ABOVE STEAM PIPING APPROX. AS SHOWN AND TO CLEAR ALL OBSTRUCTIONS.
 FOR MOUNTING DETAILS OF TE-23-105 SEE G.E. DWG. 145C3016.
 FOR MOUNTING DETAILS OF TS-23-101 THRU-104 SEE DWG. NO. I.D.-105 SHT. 2

T30-0977
RECEIVED
FILMED
 N.P.P.D., D.C.C
 S/N **1806**