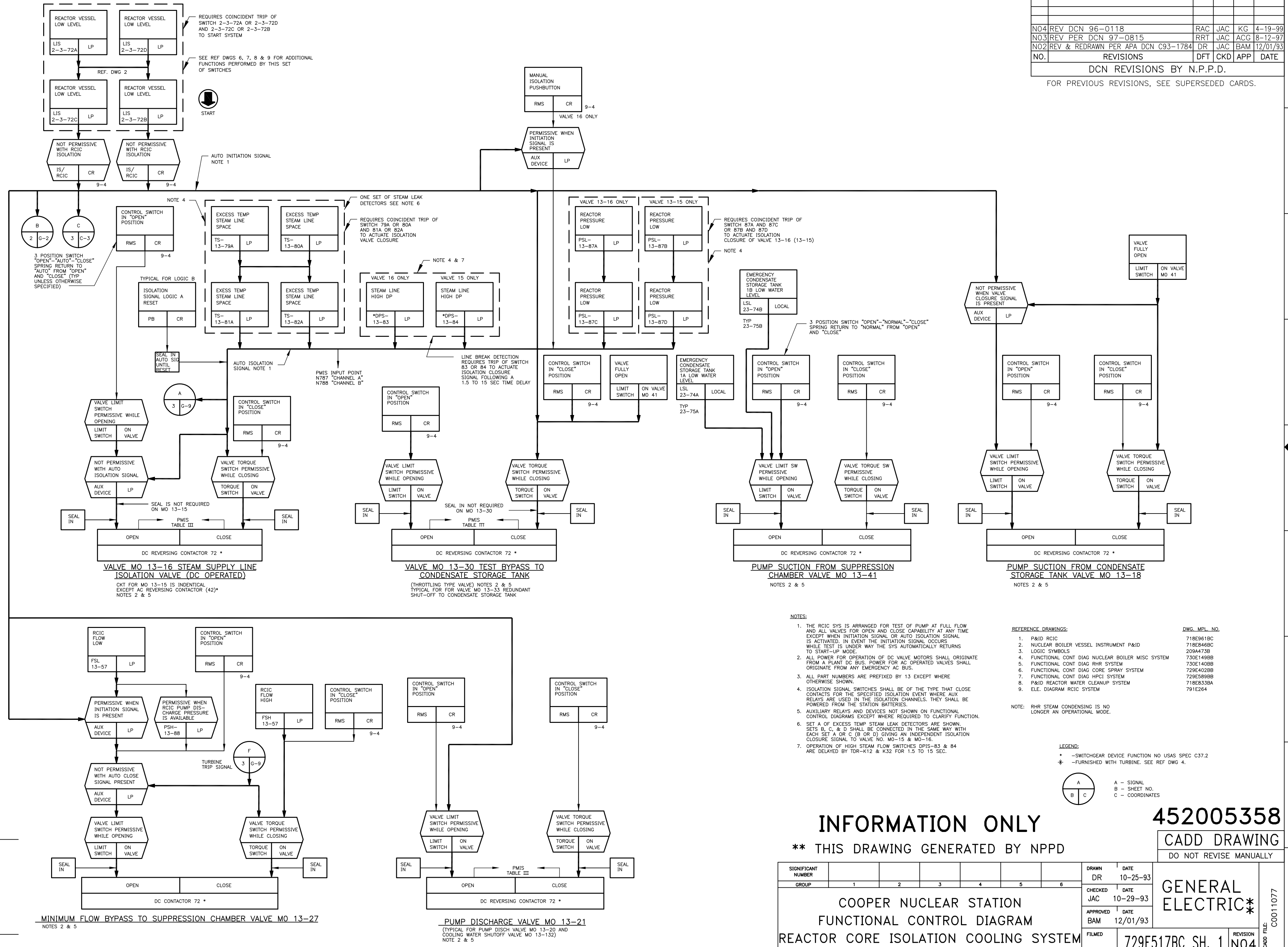


NO4	REV DCN 96-0118	RAC	JAC	KG	4-19-99
NO3	REV PER DCN 97-0815	RRT	JAC	ACG	8-12-97
NO2	REV & REDRAWN PER APA DCN C93-1784	DR	JAC	BAM	12/01/93
NO.	REVISIONS	DFT	CKD	APP	DATE

DCN REVISIONS BY N.P.P.D.

FOR PREVIOUS REVISIONS, SEE SUPERSEDED CARDS.



**NOTES:**

- THE RCIC SYS IS ARRANGED FOR TEST OF PUMP AT FULL FLOW AND ALL VALVES FOR OPEN AND CLOSE CAPABILITY AT ANY TIME EXCEPT WHEN INITIATION SIGNAL OR AUTO ISOLATION SIGNAL IS ACTIVATED. IN EVENT THE INITIATION SIGNAL OCCURS WHILE TEST IS UNDER WAY THE SYS AUTOMATICALLY RETURNS TO START-UP MODE.
- ALL POWER FOR OPERATION OF DC VALVE MOTORS SHALL ORIGINATE FROM A PLANT DC BUS. POWER FOR AC OPERATED VALVES SHALL ORIGINATE FROM ANY EMERGENCY AC BUS.
- ALL PART NUMBERS ARE PREFIXED BY 13 EXCEPT WHERE OTHERWISE SHOWN.
- ISOLATION SIGNAL SWITCHES SHALL BE OF THE TYPE THAT CLOSE CONTACTS FOR THE SPECIFIED ISOLATION EVENT WHERE AUX RELAYS ARE USED IN THE ISOLATION CHANNELS. THEY SHALL BE POWERED FROM THE STATION BATTERIES.
- AUXILIARY RELAYS AND DEVICES NOT SHOWN ON FUNCTIONAL CONTROL DIAGRAMS EXCEPT WHERE REQUIRED TO CLARIFY FUNCTION.
- SET A OF EXCESS TEMP STEAM LEAK DETECTORS ARE SHOWN. SETS B, C, & D SHALL BE CONNECTED IN THE SAME WAY WITH EACH SET A OR C (B OR D) GIVING AN INDEPENDENT ISOLATION CLOSURE SIGNAL TO VALVE NO. MO-15 & MO-16.
- OPERATION OF HIGH STEAM FLOW SWITCHES DPIS-83 & 84 ARE DELAYED BY TDR-K12 & K32 FOR 1.5 TO 15 SEC.

**REFERENCE DRAWINGS:**

1. P&ID RCIC	DWS_MFLW_NO.	718E961BC
2. NUCLEAR BOILER VESSEL INSTRUMENT P&ID		718E946BC
3. LOGIC SYMBOLS		209M473B
4. FUNCTIONAL CONT DIAG NUCLEAR BOILER MISC SYSTEM		730E149BB
5. FUNCTIONAL CONT DIAG RHR SYSTEM		730E140BB
6. FUNCTIONAL CONT DIAG CORE SPRAY SYSTEM		729E402BB
7. FUNCTIONAL CONT DIAG HPCI SYSTEM		729E599BB
8. P&ID REACTOR WATER CLEANUP SYSTEM		718E833BA
9. ELE. DIAGRAM RCIC SYSTEM		791E264

**NOTE:** RHR STEAM CONDENSING IS NO LONGER AN OPERATIONAL MODE.

**LEGEND:**

- \* - SWITCHGEAR DEVICE FUNCTION NO USAS SPEC C37.2
- † - FURNISHED WITH TURBINE. SEE REF DWG 4.

**Legend Symbols:**

- A - SIGNAL
- B - SHEET NO.
- C - COORDINATES

**INFORMATION ONLY**

**452005358**

**CADD DRAWING**

DO NOT REVISE MANUALLY

\*\* THIS DRAWING GENERATED BY NPPD

SIGNIFICANT NUMBER	1	2	3	4	5	6
GROUP						

DRAWN	DATE	10-25-93
DR		
CHECKED	DATE	10-29-93
JAC		
APPROVED	DATE	12/01/93
BAM		
FILMED		

COOPER NUCLEAR STATION  
FUNCTIONAL CONTROL DIAGRAM  
REACTOR CORE ISOLATION COOLING SYSTEM

729E517BC SH. 1 NO4

REVISION NO4

CADD FILE: CO011077