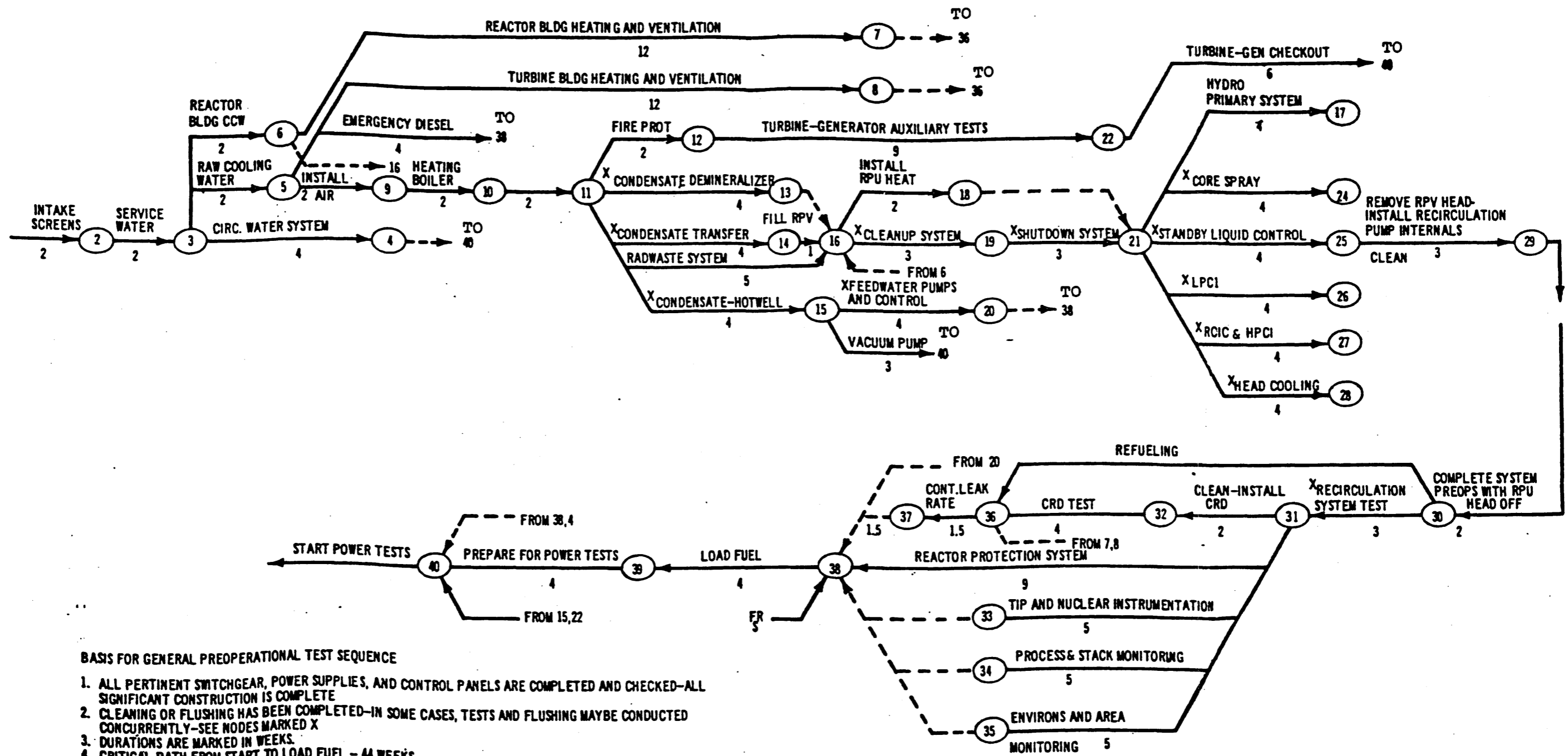


Figure 13.2.1 thru 13.2.5

Deleted

Figure 13.3.1

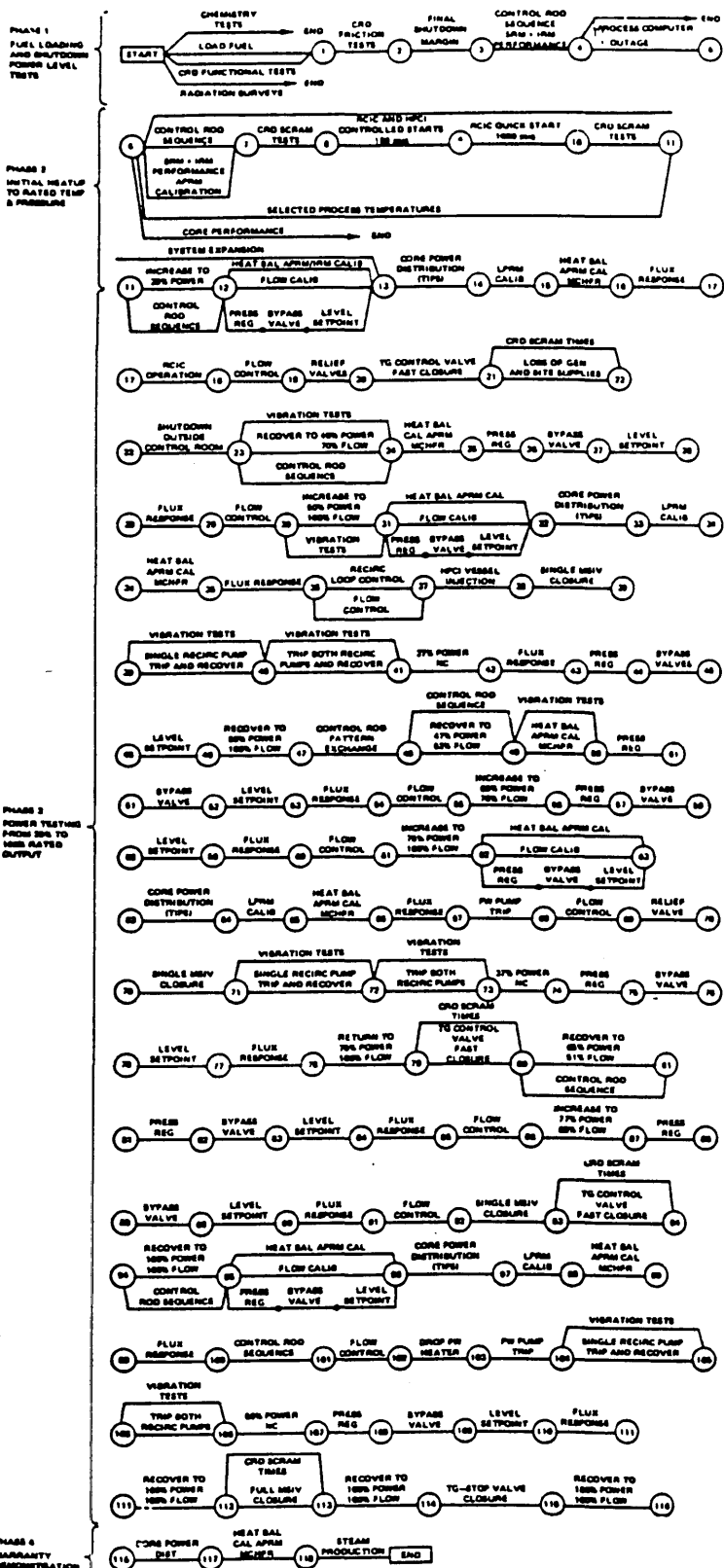
Deleted



BASIS FOR GENERAL PREOPERATIONAL TEST SEQUENCE

1. ALL PERTINENT SWITCHGEAR, POWER SUPPLIES, AND CONTROL PANELS ARE COMPLETED AND CHECKED-ALL SIGNIFICANT CONSTRUCTION IS COMPLETE
2. CLEANING OR FLUSHING HAS BEEN COMPLETED-IN SOME CASES, TESTS AND FLUSHING MAYBE CONDUCTED CONCURRENTLY-SEE NODES MARKED X
3. DURATIONS ARE MARKED IN WEEKS.
4. CRITICAL PATH FROM START TO LOAD FUEL - 44 WEEKS
5. "D" REFERS TO DUMMY RESTRAINT
6. A NUMBER OF CHECKS ON THE CRD SYSTEM CAN BE PERFORMED ON ELECTRICAL VALVES, INDICATORS, ETC. PRIOR TO THE CRD TEST.
7. AREA MONITORING FOR THE FUEL RECEIVING AND INSPECTION AREAS WILL BE COMPLETED FOR EARLY RECEIPT OF FUEL

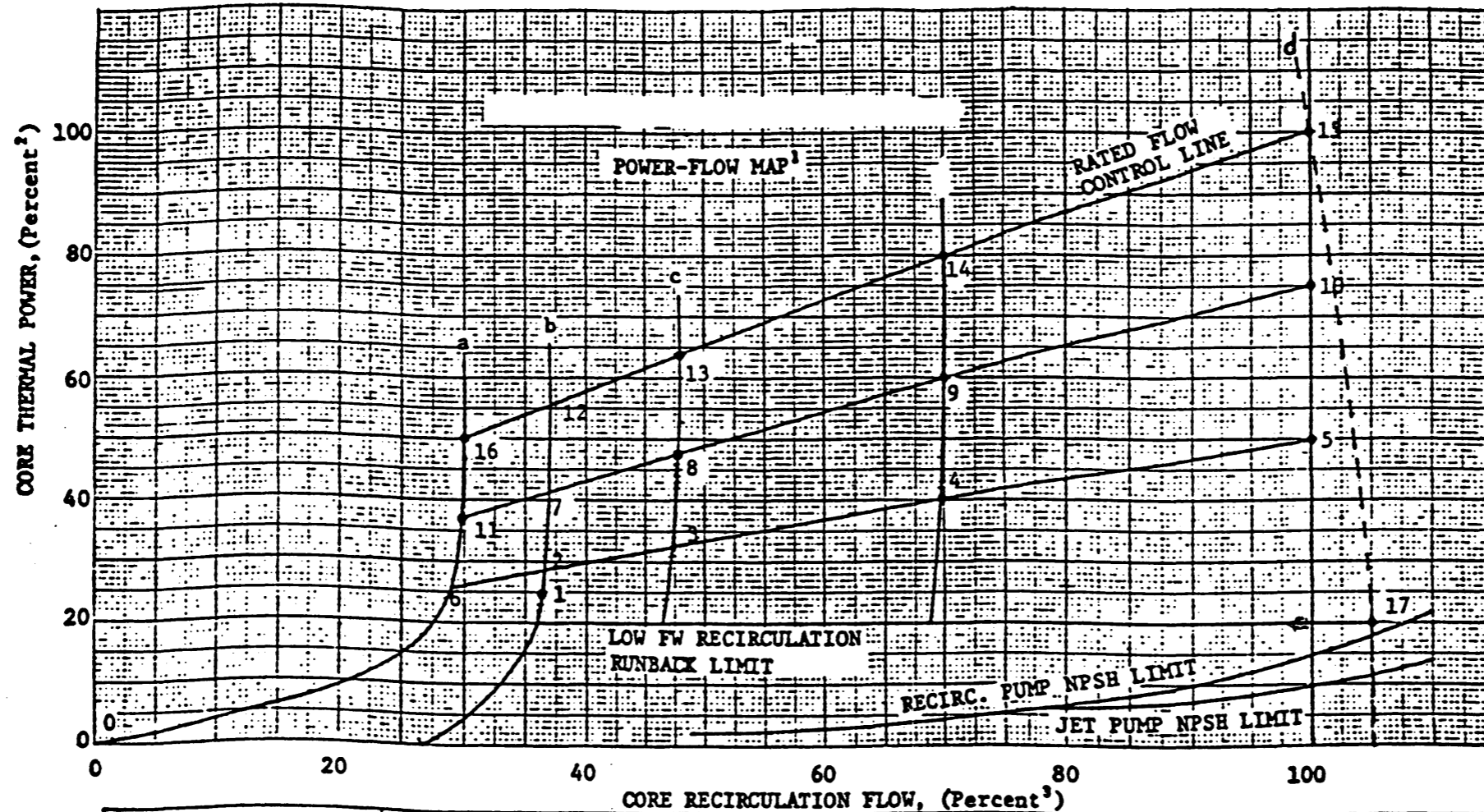
<p>PECO ENERGY COMPANY PEACH BOTTOM ATOMIC POWER STATION UNITS 2 AND 3 UPDATED FINAL SAFETY ANALYSIS REPORT</p>
<p>PRE-OPERATIONAL TEST SEQUENCE</p>
<p>FIGURE 13.4.1 REV. 14 05/97</p>



**PECO ENERGY COMPANY
PEACH BOTTOM ATOMIC POWER STATION
UNITS 2 AND 3
UPDATED FINAL SAFETY ANALYSIS REPORT**

STARTUP TEST SEQUENCE

FIGURE 13.5.1 REV. 14 05/97



TEST CONDITION NO.	0	1	2	3	4	5	6	7	8	9	10	11	12	13	14	15	16	17
ROD PATTERN	V	V	a*	a*	a*	a	a*	b*	b*	b*	b	b*	c*	c*	c*	c	c*	V
Z PUMP SPEED	0*	20	20	--	--	--	0*	20	--	--	--	0*	20	--	--	--	0*	--
Z POWER	0	15- 25	25- 33	30- 40	35- 45	45- 55	~27	35- 45	45- 55	55- 65	70- 80	~37	45- 55	55- 65	67- 77	95- 100	~50	V
Z CORE FLOW	0	~37	39	53	75	100	NC	39	~52	70	100	NC	~38	~51	~68	100	NC	100

CONSTANT PUMP SPEED LINES

- ¹See Table 13.5.3 for Startup Test Titles.
- ²Power in percent of rated thermal power, (3293)Mwt.
- ³Core flow in percent of rated core recirculation flow, (102.5) x 10⁶lbs/hr.
- *Asterisked values are set as initial test conditions,
- NC=Natural circulation condition
- V=Varies
- a) Natural circulation.
- b) 20% pump speed.
- c) Contractual lower limit of master flow control.
- d) Pump speed for full flow at full power.

PECO ENERGY COMPANY
PEACH BOTTOM ATOMIC POWER STATION
UNITS 2 AND 3
UPDATED FINAL SAFETY ANALYSIS REPORT

TEST POINT DESIGNATION POWER FLOW
MAP

FIGURE 13.5.2 REV. 14 05/97