

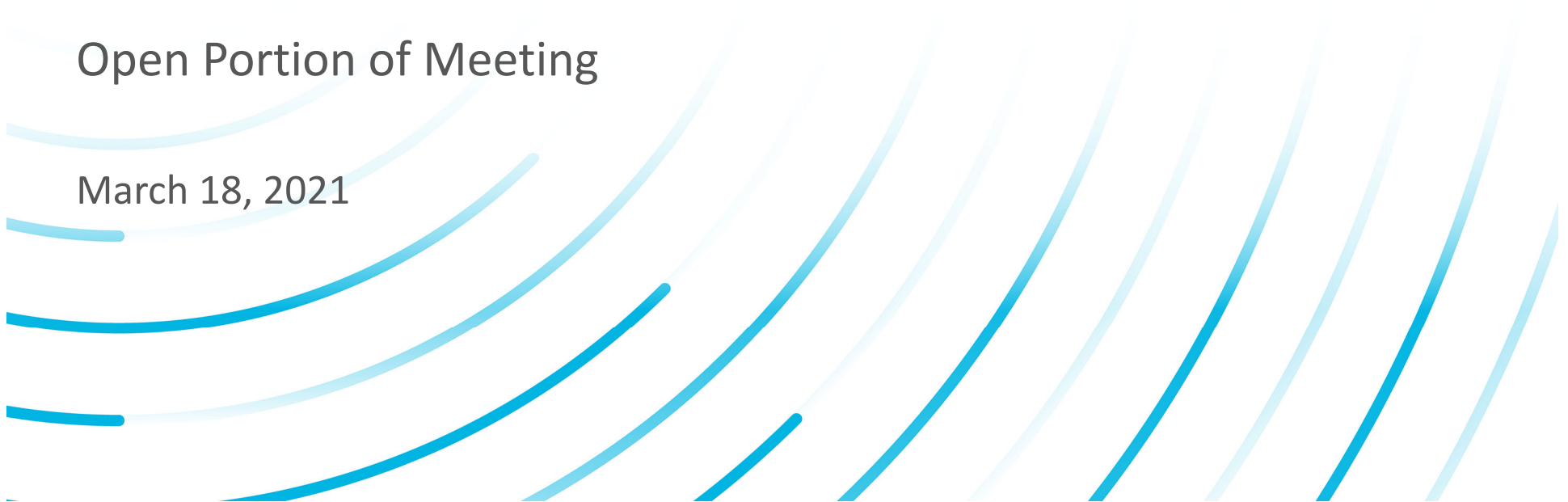
Non-Proprietary Information



GNF's Risk-Informed Licensing for High Burnup Extension

Open Portion of Meeting

March 18, 2021



Agenda

(1) Public Presentation

(2) Closed Session

- Updated Risk-Informed Approach
- Submittal and Approval Strategy
- Risk Assessments for Specific Impacted Analyses
- Future High Burnup Core Designs

Risk-Based v. Risk-Informed

Risk-Based

“A “risk-based” approach to regulatory decision-making is one in which such decision-making is solely based on the numerical results of a risk assessment.”

Risk-Informed

“A “risk-informed” approach enhances the deterministic approach Where appropriate, a risk-informed regulatory approach can also be used to reduce unnecessary conservatism in purely deterministic approaches...”

The Risk-Informed Proposition for Extension of the Exposure Limit

Is the risk of using GNF's current deterministic approaches to a higher burnup limit small enough to conclude the applicability range of the deterministic approaches can be extended to the higher burnup limit?

Are the physics, processes, and uncertainties sufficiently well understood that there is minimal risk in extrapolating the models to a higher burnup?

Are the consequences in the extrapolation of models sufficiently small that there would be no additional risk to the health and safety of the public?