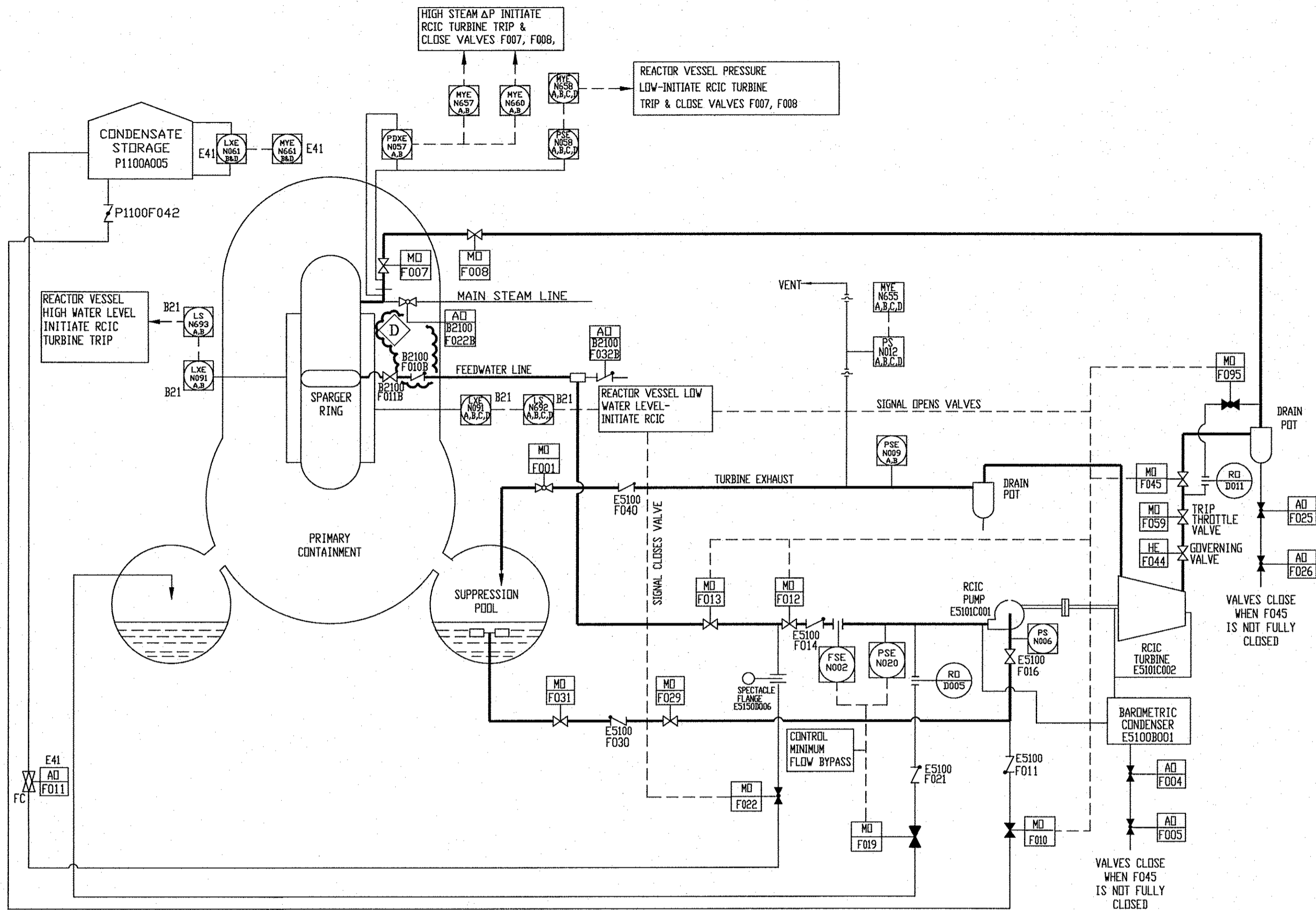


TRIP SIGNALS AND SETTINGS TO INITIATE TRANSFER OF PUMP SUCTION TO THE SUPPRESSION POOL.		
TRIP	SETTING	ACTION
CONDENSATE LOW LEVEL-ALARM ONLY	E41 LXE N661B,D	REMOTE MANUAL OPENING OF VALVES F029 & F031 CAUSES AUTOMATIC CLOSING OF VALVE F010

THERE ARE NO TRIP SIGNALS TO RETURN RCIC PUMP SUCTION TO THE CONDENSATE STORAGE TANK.



- NOTES:
- FOR TECH SPEC SETTING VALVES, REFER TO TECH. SPECS.
  - ALL INSTRUMENTATION SHOWN ON THIS DIAGRAM SHOULD BE PREFIXED BY E51 UNLESS NOTED OTHERWISE.
  - ALL VALVES AND ORIFICES SHOWN ON THIS DIAGRAM SHOULD BE PREFIXED BY E5150 UNLESS NOTED OTHERWISE.

4M721-5878  
LATEST REVISION

NUCLEAR SAFETY RELATED

THIS IS A MICROSTATION PRODUCED DRAWING. CHANGES OR REVISIONS MUST BE BROUGHT TO THE ATTENTION OF THE PLANT ENGINEERING DESIGN GROUP TO ENSURE THAT CONFIGURATION CONTROL IS MAINTAINED.

THIS DRAWING WAS REFORMATTED BY MICROSTATION AT REVISION "C". ALL PREVIOUS APPROVAL SIGNATURES ARE ON FILE ON MICROFILM IN DOCUMENT CONTROL.

DCD'S INCORPORATED: EDP 36178.B010, REV. 0			
OTHER REVISIONS:			
PREPARED BY	DATE	CHECKED BY	DATE
WJ ADLER	3/29/11	<i>[Signature]</i>	5-18-11
APPROVED BY	DATE	CHECKED BY	DATE
<i>[Signature]</i>	5-26-11	<i>[Signature]</i>	5-26-11

A PORTION OF THIS DRAWING IS AFFECTED BY THE FOLLOWING:		PREPARED BY	DATE
TC	CHANGE DOCUMENT	CHECKED BY	DATE
		APPROVED BY	DATE
		OTHER APPROVALS	DATE

INC. CODE	Detroit Edison		Fermi 2
U	TITLE REACTOR CORE ISOLATION COOLING FOLLOWING MAIN CONDENSER ISOLATION USING SUPPRESSION POOL AS A BACKUP WATER SOURCE		
	APERTURE CARD TITLE UFSAR FIG. 5.5-10		
	PLANT IDENTIFICATION SYSTEM NUMBER E5100		ARMS RECIPIENT #
	DOCUMENT TYPE CODE DDMEC	NUC OPS FILE NO. 1801	DATE ISSUED TO IS 5-26-11
	DRAWING NUMBER 4M721-5878		REV. D