

NOTES

- FOR LEGEND OF SYMBOLS AND ABBREVIATIONS SEE M-2001.
- PIPING SHOWN DOTTED IS EXISTING.
- NUMBERS IN RECTANGLES ON THIS DRAWING THUS: [3103] INDICATE ISOMETRIC DRAWINGS SHOWING CONNECTING SYSTEMS.
- REFER TO DESIGN INSTRUCTION NO. 136.
- THE PLANT IDENTIFICATION NUMBER FOR THE STANDBY FEEDWATER SYSTEM IS N 21-03.
- ALL SBFW SYSTEM PIPING IS GROUP "D", QUALITY ASSURANCE LEVEL II, EXCEPT WHERE NOTED.
- FOR SBFW PUMP AREA PLAN DRAWING SEE M-5087.
- DESIGNATIONS THUS: "ANSI-900" INDICATE PRESSURE CLASS OF VALVES AND/OR FLANGES TO THE BOUNDARY INDICATED.
- UNLESS OTHERWISE NOTED: ALL INSTRUMENT PIS #s ARE PREFIXED N21. ALL VALVE & EQUIPMENT PIS #s ARE PREFIXED N2103.
- FOR SYSTEM FUNCTIONAL OPERATING SKETCH SEE DWG. M-5715-3.

REFERENCE DRAWINGS

- M-2090 NUCLEAR BOILER SYSTEM P&ID.
- M-2006 CONDENSATE STORAGE SYSTEM P&ID.
- M-2023 FEEDWATER SYSTEM P&ID.
- DELETED.
- M-2035 HIGH PRESSURE COOLANT INJECTION SYSTEM P&ID.
- I-2310-24 THRU 34 SBFW SYS LOGIC DWG. 'S'.
- I-2315-10 S/D SBFW SYS INSTRUMENTATION.
- I-2311-35 THRU 43 SBFW SYS CONTROL S/D.

6M721-5083
LATEST REVISION

NON-NUCLEAR SAFETY RELATED

THIS IS A MICROSTATION PRODUCED DRAWING. CHANGES OR REVISIONS MUST BE BROUGHT TO THE ATTENTION OF THE PLANT ENGINEERING DESIGN GROUP TO ENSURE THAT CONFIGURATION CONTROL IS MAINTAINED.

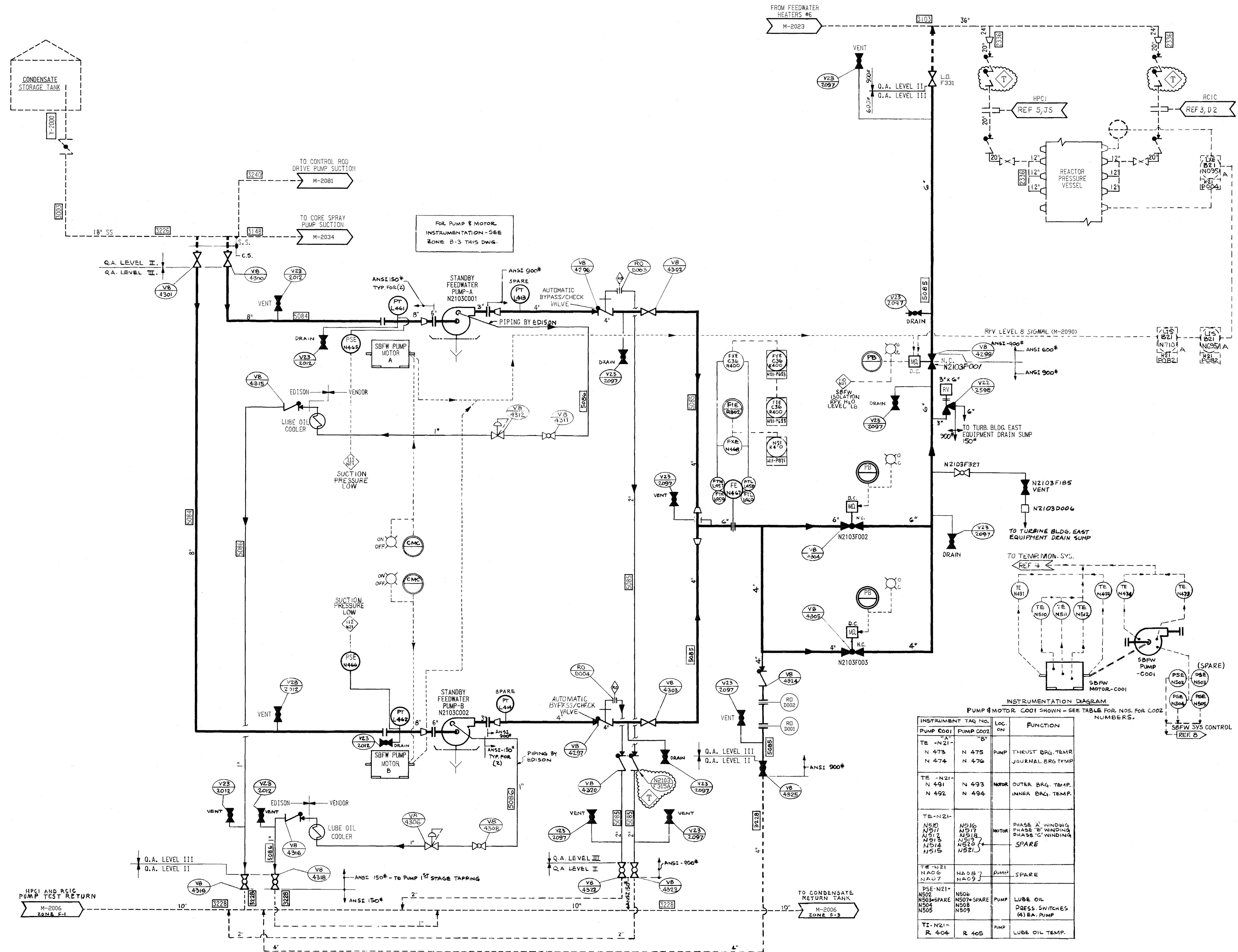
INC. CODE	Detroit Edison	Fermi 2
TITLE	PIPING & INSTRUMENT DIAGRAM STANDBY FEEDWATER SYSTEM	
APERTURE CARD TITLE	DIAG SBFW SYSTEM UNIT 2	
PLANT IDENTIFICATION SYSTEM NUMBER	N2103	
DOCUMENT TYPE CODE	DDDMEC	NUC OPS FILE NO. 1801
DATE ISSUED TO IS	12-28-17	ARMS RECEIPT #
DRAWING NUMBER	6M721-5083	REV. T

INSTRUMENTATION DIAGRAM
PUMP & MOTOR COOL - SHOWN - SEE TABLE FOR NOS. FOR CODE NUMBERS.

INSTRUMENT TAG NO.	PUMP COOL	PUMP COOL	LOC.	FUNCTION
TE -N21- N 473	N 473	N 473	PUMP	THRUST BRG. TEMP
N 474	N 474	N 474	PUMP	JOURNAL BRG. TEMP
TE -N21- N 491	N 491	N 493	MOTOR	OUTER BRG. TEMP.
N 492	N 492	N 494	MOTOR	INNER BRG. TEMP.
TE -N21- N510	N516	N517	MOTOR	PHASE 'A' WINDING
N511	N517	N518	MOTOR	PHASE 'B' WINDING
N512	N518	N519	MOTOR	PHASE 'C' WINDING
N514	N520	N521	MOTOR	SPARE
N515	N521	N522	MOTOR	SPARE
TE -N21- NAC6	NAC7	NAC9	PUMP	SPARE
PSE -N21- NS02	NS04	NS05	PUMP	LUBE OIL PRESS. SWITCHES (A) & (B) PUMP
NS03-SPARE	NS04-SPARE	NS05-SPARE	PUMP	
TE -N21- R 404	R 404	R 405	PUMP	LUBE OIL TEMP.

THIS DRAWING WAS REFORMATTED BY MICROSTATION AT REVISION "T". ALL PREVIOUS APPROVAL SIGNATURES ARE ON FILE ON MICROFILM IN DOCUMENT CONTROL.

DCI'S INCORPORATED: RID-80736, REV. #	DATE	5/16/12
OTHER REVISIONS:	DATE	
ADMINISTRATIVE CHANGES PER PEP-0019	DATE	
PREPARED BY J. KEELER	DATE	12/28/17
APPROVED BY <i>[Signature]</i>	DATE	12-28-17
DATE	5/16/12	



FOR PUMP & MOTOR INSTRUMENTATION - SEE ZONE B-3 THIS DWG.

INSTRUMENTATION DIAGRAM
PUMP & MOTOR COOL - SHOWN - SEE TABLE FOR NOS. FOR CODE NUMBERS.

INSTRUMENT TAG NO.	PUMP COOL	PUMP COOL	LOC.	FUNCTION
TE -N21- N 473	N 473	N 473	PUMP	THRUST BRG. TEMP
N 474	N 474	N 474	PUMP	JOURNAL BRG. TEMP
TE -N21- N 491	N 491	N 493	MOTOR	OUTER BRG. TEMP.
N 492	N 492	N 494	MOTOR	INNER BRG. TEMP.
TE -N21- N510	N516	N517	MOTOR	PHASE 'A' WINDING
N511	N517	N518	MOTOR	PHASE 'B' WINDING
N512	N518	N519	MOTOR	PHASE 'C' WINDING
N514	N520	N521	MOTOR	SPARE
N515	N521	N522	MOTOR	SPARE
TE -N21- NAC6	NAC7	NAC9	PUMP	SPARE
PSE -N21- NS02	NS04	NS05	PUMP	LUBE OIL PRESS. SWITCHES (A) & (B) PUMP
NS03-SPARE	NS04-SPARE	NS05-SPARE	PUMP	
TE -N21- R 404	R 404	R 405	PUMP	LUBE OIL TEMP.

THIS DRAWING WAS REFORMATTED BY MICROSTATION AT REVISION "T". ALL PREVIOUS APPROVAL SIGNATURES ARE ON FILE ON MICROFILM IN DOCUMENT CONTROL.

DCI'S INCORPORATED: RID-80736, REV. #	DATE	5/16/12
OTHER REVISIONS:	DATE	
ADMINISTRATIVE CHANGES PER PEP-0019	DATE	
PREPARED BY J. KEELER	DATE	12/28/17
APPROVED BY <i>[Signature]</i>	DATE	12-28-17
DATE	5/16/12	