



GENERAL NOTES:

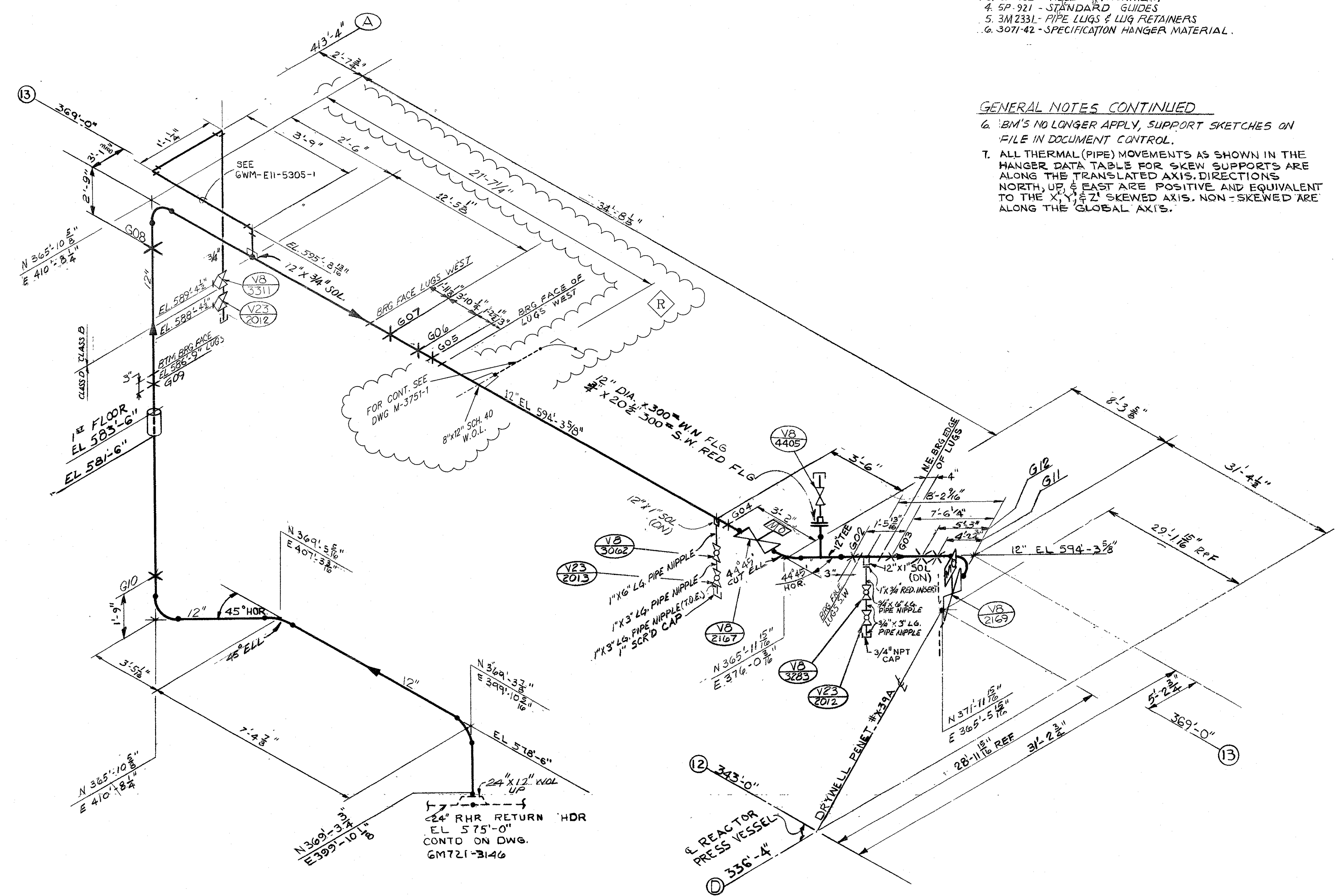
1. FOR INSTALLATION SEE 6M721-3240-2
2. ATTACH HANGER TO STRUCTURE IN ACCORDANCE WITH SP732
3. REMOVE EXCESS GREASE FROM THREADED MEMBERS AFTER ERECTION
4. AFTER ERECTION IS COMPLETE, FIELD WILL FURNISH EG.47 WITH A MARKED COPY OF THIS DRAWING GIVING AS-BUILT DIMENSIONS
5. FOR SUPPORT SYSTEM COMPONENT STRUCTURAL CALCULATIONS SEE DESIGN CALCULATION NUMBER DC.605 ON FILE IN THE FERM 2 DOCUMENT CONTROL CENTER.

REFERENCE DRAWINGS:

1. 6M721-3159-1 PIPE FABRICATION ISOMETRIC
2. 3M2323 - STANDARD HANGERS
3. SP-732 - WELD ATTACHMENT
4. SP-921 - STANDARD GUIDES
5. 3M2331 - PIPE LUGS & LUG RETAINERS
6. 3071-42 - SPECIFICATION HANGER MATERIAL.

GENERAL NOTES CONTINUED

6. BMS NO LONGER APPLY, SUPPORT SKETCHES ON FILE IN DOCUMENT CONTROL.
7. ALL THERMAL (PIPE) MOVEMENTS AS SHOWN IN THE HANGER DATA TABLES FOR SKEW SUPPORTS ARE ALONG THE TRANSLATED AXIS. DIRECTIONS NORTH, UP & EAST ARE POSITIVE AND EQUIVALENT TO THE X, Y, & Z SKEWED AXIS. NON-SKEWED ARE ALONG THE GLOBAL AXIS.



HANGER DATA						PER S.I.L. STRESS REPORT EMD-5205 RHR-16, REV. 05 *					
MARK	LOGIC	TYPE	DETAIL	DWG 3M-2329	B/M	B/W	LOAD	PIPE MOVE	H/C	REMARKS	
				TYPE	PART	ITEM	HOT	COLD	E-W	N-S	U-D
E11-3159-G02	D4	SNUB		3M-2329H-8			4155 (E-W)	36N	65S	19U	NODE 30
E11-3159-G03	D4	SNUB		3M-2329H-9			5104 (E-W)	50W	54N	27U	NODE 33
E11-3159-G04	D4	SOLID		3M-2329H-10			7228 (U-D)	50W	58N	0	NODE 64
E11-3159-G05	D5	SNUB		3M-2329H-11			2086 (E-W)	59W	20S	01D	NODE 33
E11-3159-G06	D5	SOLID		A.B. 3M-2329H-12			4929 (U-D)	60W	24S	0	NODE 33
E11-3159-G07	F3	SNUB		3M-2329H-13			1142 (N-S)	62W	34S	04U	NODE 30
E11-3159-G08	E6	GUIDE		3M-2329H-14			1814 (E-W)	65W	0	04U	NODE 35
E11-3159-G09	D6	SNUB		3M-2329H-15			6466 (U-D)	45N	33S	0	NODE 30
E11-3159-G10	D6	GUIDE		3M-2329H-16			1999 (E-W)	0	48S	05D	NODE 20B
E11-3159-G11	D3	SNUB					6771 (U-D)	67W	59N	45U	NODE 97
E11-3159-G12	D3	SPRG					3822	64W	58N	40U	NODE 95

* STRESS REPORT DOES NOT REFLECT SUPPORT RELOCATIONS LISTED IN REV.H
 * STRESS REPORT DOES NOT REFLECT SUPPORT RELOCATIONS LISTED IN REV.G
 * STRESS REPORT DOES NOT REFLECT SUPPORT RELOCATIONS LISTED IN REV.F

6M721-3159-2
LATEST REVISION R

CLASS 1
INSTALLATION

NUCLEAR SAFETY RELATED

THIS IS A MICROSTATION PRODUCED DRAWING. CHANGES OR REVISIONS MUST BE BROUGHT TO THE ATTENTION OF THE PLANT ENGINEERING DESIGN GROUP TO ENSURE THAT CONFIGURATION CONTROL IS MAINTAINED.

THIS DRAWING WAS REFORMATTED BY MICROSTATION AT REVISION "R". ALL PREVIOUS APPROVAL SIGNATURES ARE ON FILE ON MICROFILM IN DOCUMENT CONTROL.

INC. CODE	Detroit Edison	Fermi 2
TITLE	HANGERS - PIPING ISOMETRIC RHR CONTAINMENT SPRAY (NORTH) FROM HDR TO RPV VESSEL REACTOR BLDG	
APERTURE CARD TITLE	HGR RHR CONT SPRAY NORTH	
PLANT IDENTIFICATION SYSTEM NUMBER	E1150	
DOCUMENT TYPE CODE	DDDMC	NUC OPS FILE NO 1801
DRAWING NUMBER	6M721-3159-2	DATE ISSUED TO IS 4/19/10
REV	R	REV

APPROVED BY: J. M. M... DATE: 1-20-16
 CHECKED BY: C. M... DATE: 2/10/16
 PREPARED BY: C. MCDONNELL DATE: 1-20-16