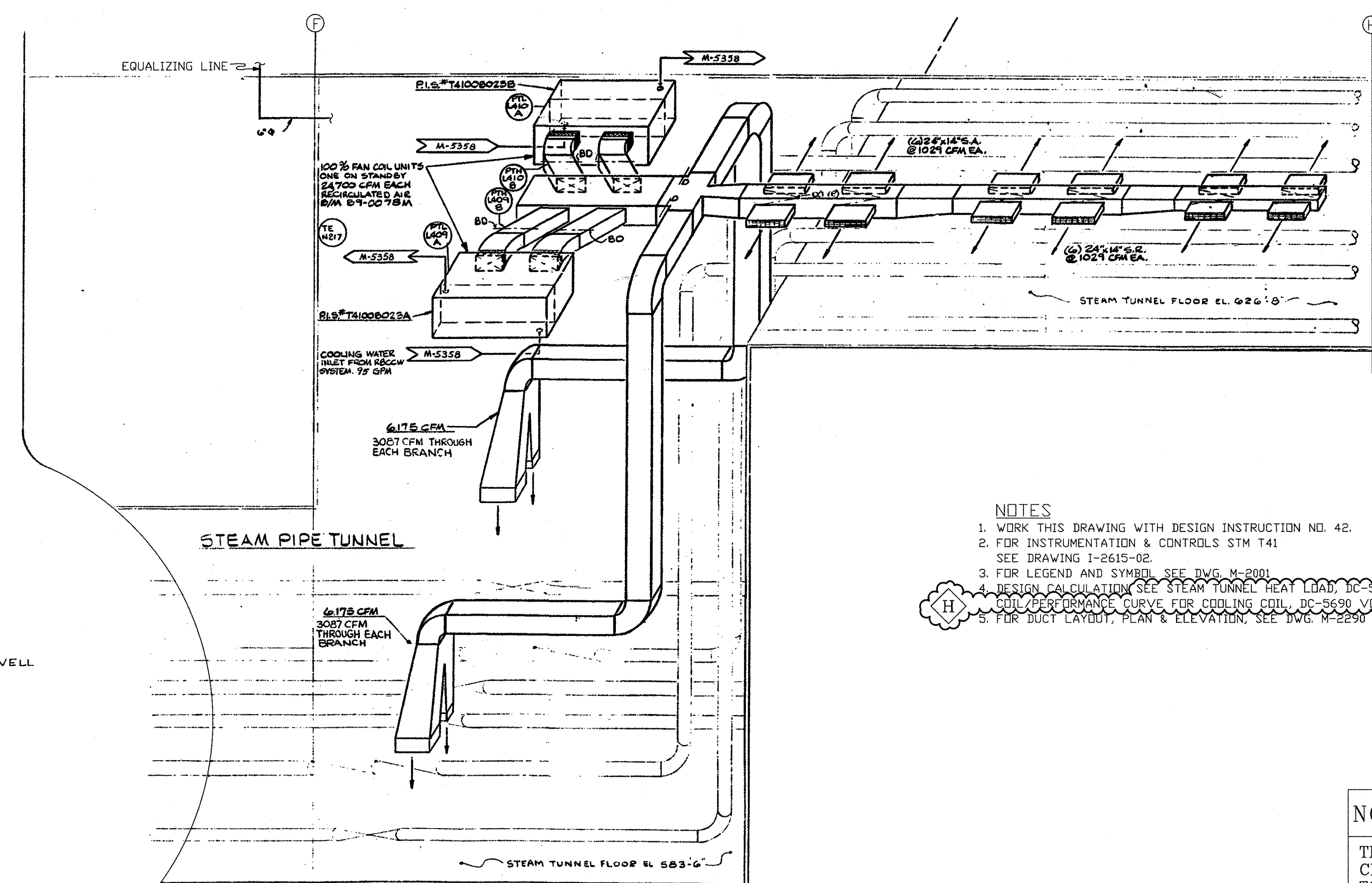


D

C

B

A



- NOTES**
1. WORK THIS DRAWING WITH DESIGN INSTRUCTION NO. 42.
 2. FOR INSTRUMENTATION & CONTROLS STM T41 SEE DRAWING I-2615-02.
 3. FOR LEGEND AND SYMBOL SEE DWG. M-2001.
 4. DESIGN CALCULATION SEE STEAM TUNNEL HEAT LOAD, DC-5576 VOL. 1 AND WTR COIL PERFORMANCE CURVE FOR COOLING COIL, DC-5630 VOL. 1.
 5. FOR DUCT LAYOUT, PLAN & ELEVATION, SEE DWG. M-2250.



5M721-2756
LATEST REVISION H



NON-NUCLEAR SAFETY RELATED

THIS IS A MICROSTATION PRODUCED DRAWING. CHANGES OR REVISIONS MUST BE BROUGHT TO THE ATTENTION OF THE PLANT ENGINEERING DESIGN GROUP TO ENSURE THAT CONFIGURATION CONTROL IS MAINTAINED.

THIS DRAWING WAS REFORMATTED BY MICROSTATION AT REVISION "H". ALL PREVIOUS APPROVAL SIGNATURES ARE ON FILE ON MICROFILM IN DOCUMENT CONTROL.

H DCD'S INCORPORATED: EDP 36969.B049, REV. 0			
A PORTION OF THIS DRAWING IS AFFECTED BY THE FOLLOWING:			
TC	CHANGE DOCUMENT	PREPARED BY	DATE
		CHECKED BY	DATE
OTHER REVISIONS: ADMINISTRATIVE CHANGES PER PEP-0019.			
PREPARED BY	DATE	CHECKED BY	DATE
K. BENNETT	3-13-14	D. KAKULZINS	3/13/14
APPROVED BY	DATE	EDP POSTING ENTRIES REQUIRE THE ADDITION OF THE ARMS STATUS CODE: EITHER "APC" OR "ASD"	DATE
John M... 7/16/13	7/16/13		3/25/14

INC. CODE	Detroit Edison		Fermi 2
T	TITLE DIAGRAM-STEAM TUNNEL COOLING SYSTEM REACTOR BUILDING		
APERTURE CARD TITLE DIAG. STEAM TUNNEL COOLING			
PLANT IDENTIFICATION SYSTEM NUMBER T4100		ARMS RECIPIENT #	
DOCUMENT TYPE CODE DDDMEC	NUC OPS FILE NO. 1801	DATE ISSUED TO IS 03.28.2014	
DRAWING NUMBER 5M721-2756	REV. H		