

REACTOR & AUXILIARY BUILDINGS
SEE NOTE 8

RADWASTE BUILDING
SEE NOTE 9

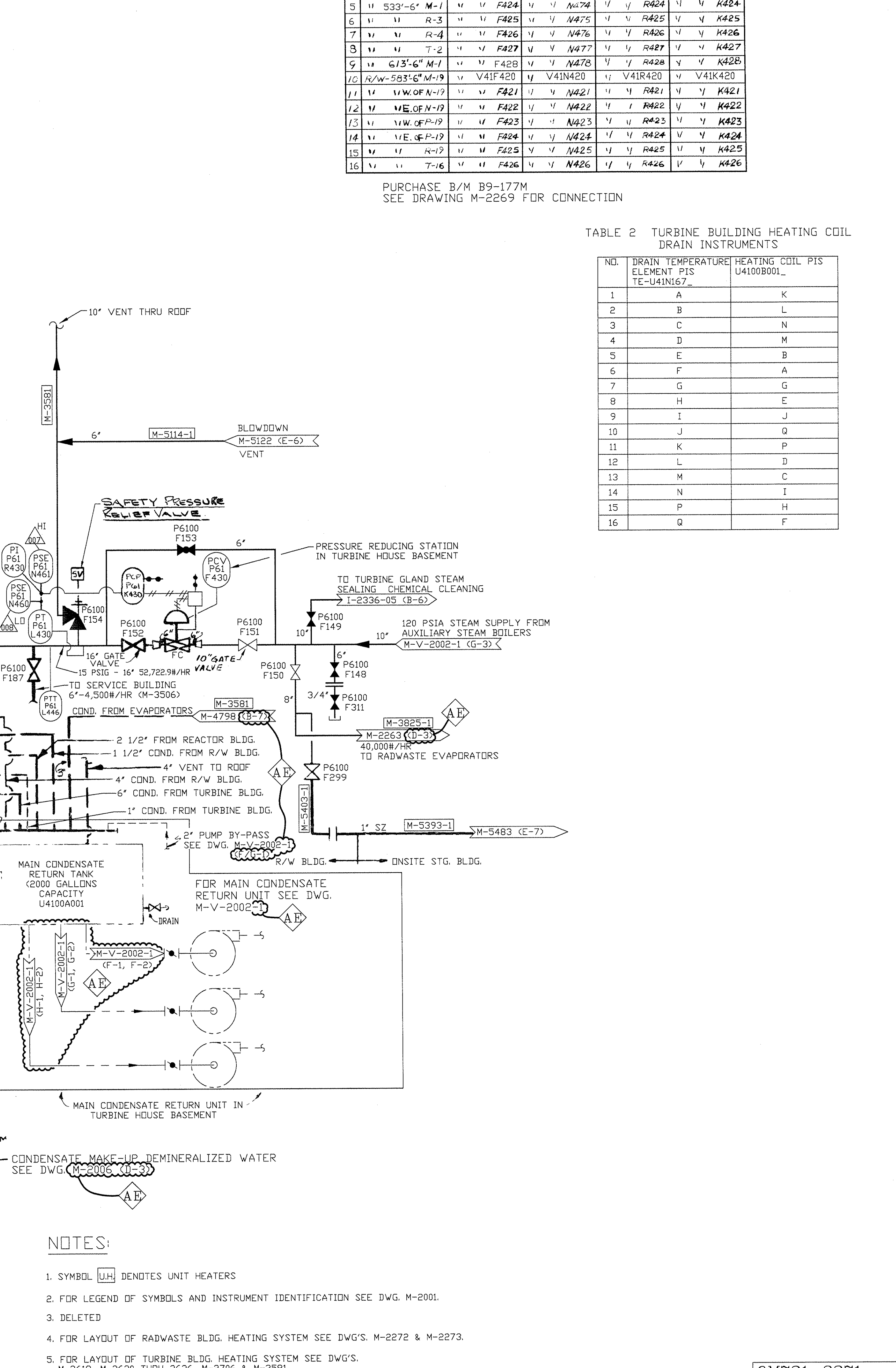
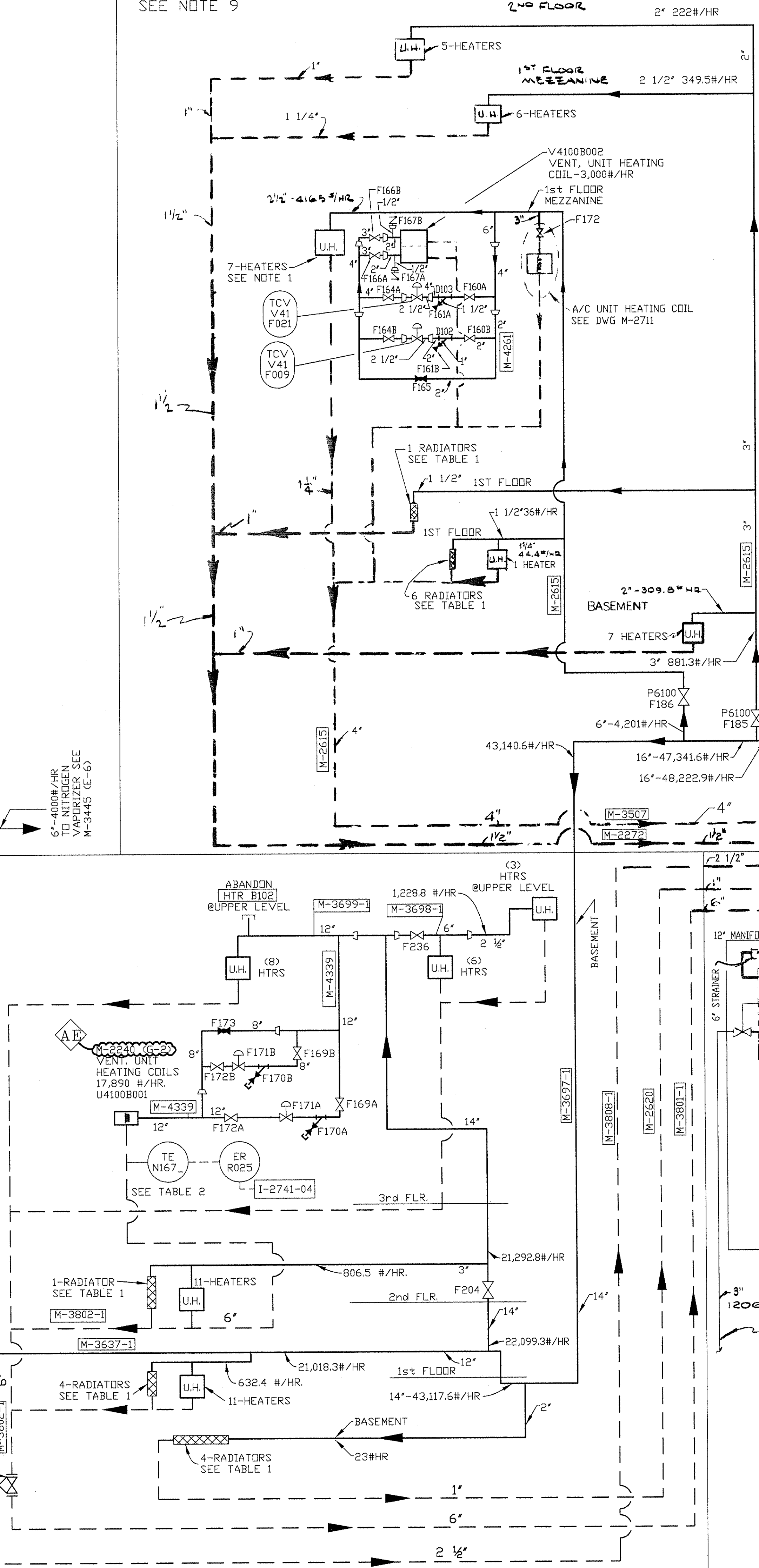
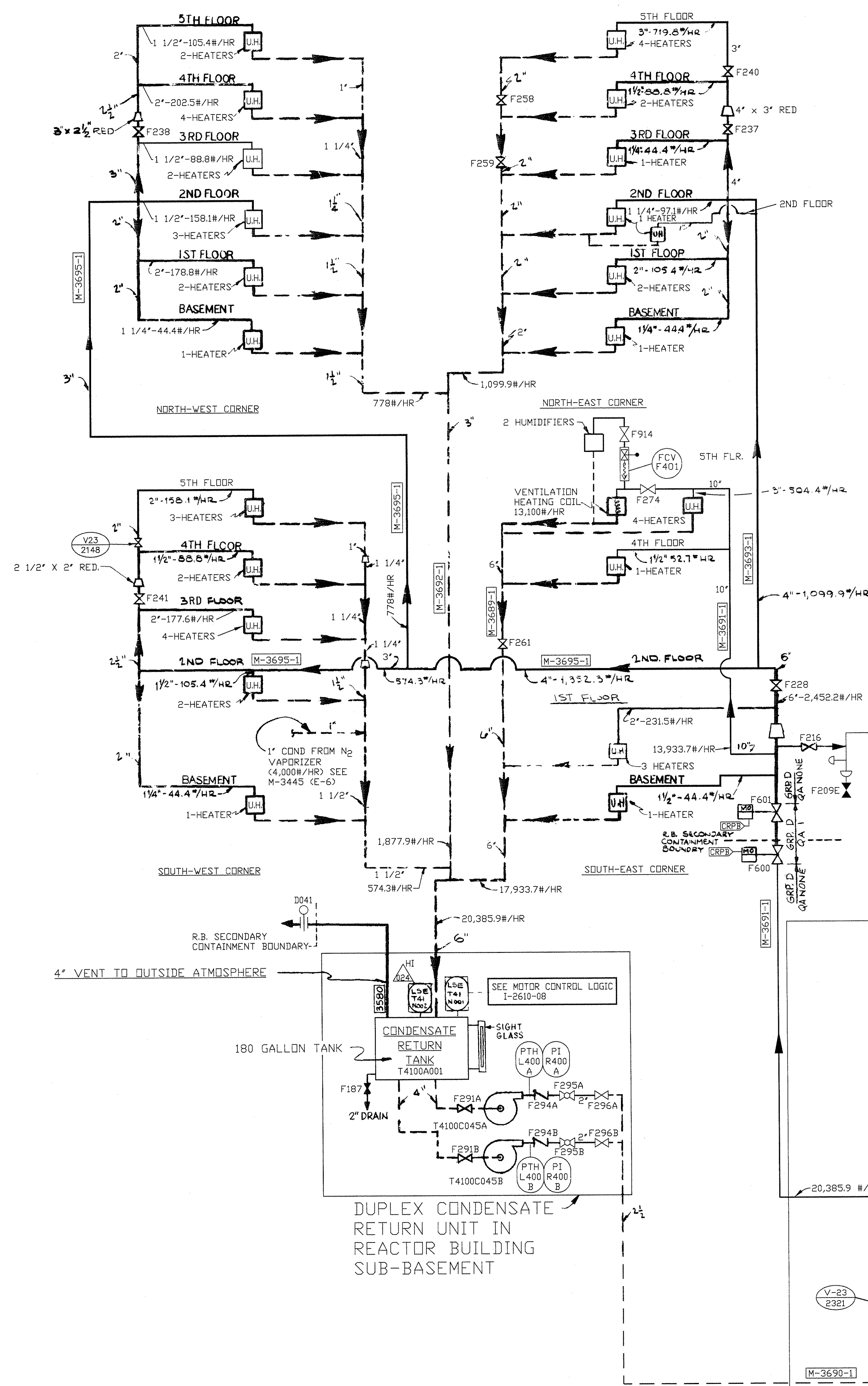
TABLE 1 RADIATOR CONTROL INSTRUMENTS

NO.	T/P	LOCATION	CONTROL VALVE	T. TRANSMITTER	T. INDICATOR	T. CONTROLLER
1	T/B	564-01 M-1	TCV-U41F420	TXP-U41N470	775-U41R420	TCU-U41K420
2	"	"	"	"	"	"
3	"	"	"	"	"	"
4	"	"	"	"	"	"
5	"	"	"	"	"	"
6	"	"	"	"	"	"
7	"	"	"	"	"	"
8	"	"	"	"	"	"
9	"	"	"	"	"	"
10	"	"	"	"	"	"
11	"	"	"	"	"	"
12	"	"	"	"	"	"
13	"	"	"	"	"	"
14	"	"	"	"	"	"
15	"	"	"	"	"	"
16	"	"	"	"	"	"

PURCHASE B/M B9-177M
SEE DRAWING M-2269 FOR CONNECTION

TABLE 2 TURBINE BUILDING HEATING COIL DRAIN INSTRUMENTS

NO.	DRAIN TEMPERATURE ELEMENT PIS	HEATING COIL PIS
1	A	K
2	B	L
3	C	N
4	D	M
5	E	B
6	F	A
7	G	G
8	H	E
9	I	J
10	J	Q
11	K	P
12	L	D
13	M	C
14	N	I
15	P	H
16	Q	F



- NOTES:
- SYMBOL UH DENOTES UNIT HEATERS
 - FOR LEGEND OF SYMBOLS AND INSTRUMENT IDENTIFICATION SEE DWG. M-2001.
 - DELETED
 - FOR LAYOUT OF RADWASTE BLDG. HEATING SYSTEM SEE DWG'S. M-2272 & M-2273.
 - FOR LAYOUT OF TURBINE BLDG. HEATING SYSTEM SEE DWG'S. M-2618, M-2620 THRU 2626, M-2706 & M-3381
 - FOR LAYOUT OF REACTOR & AUXILIARY BLDG'S HEATING SYSTEMS SEE DWG'S. M-2636 THRU M-2642, M-2616 & M-2617
 - SEE M-2269 FOR RADIATOR CONTROL INSTALLATION DETAIL.
 - UNLESS OTHERWISE SHOWN: ALL INSTRUMENT PIS NOS ARE PREFIXED T41 ALL VALVE AND EQUIPMENT PIS NOS ARE PREFIXED T4100
 - UNLESS OTHERWISE SHOWN: ALL INSTRUMENT PIS NOS ARE PREFIXED V41 ALL VALVE AND EQUIPMENT PIS NOS ARE PREFIXED V4100
 - UNLESS OTHERWISE SHOWN: ALL INSTRUMENT PIS NOS ARE PREFIXED U41 ALL VALVE AND EQUIPMENT PIS NOS ARE PREFIXED U4100

NON-NUCLEAR SAFETY RELATED

THIS IS A MICROSTATION PRODUCED DRAWING. CHANGES OR REVISIONS MUST BE BROUGHT TO THE ATTENTION OF THE PLANT ENGINEERING DESIGN GROUP TO ENSURE THAT CONFIGURATION CONTROL IS MAINTAINED.

6M721-2271
LATEST REVISION AE

INC. CODE: Detroit Edison
TITLE: HEATING FLOW DIAGRAM FOR TURBINE-RADWASTE & REACTOR BUILDINGS

APERTURE CARD TITLE: HEATING FLOW DIAGRAM
PLANT IDENTIFICATION SYSTEM NUMBER: T4100, U4100, V4100

PREPARED BY: DATE: 9/24/13
APPROVED BY: DATE: 9/24/13

EDC'S INCORPORATED: A PORTION OF THIS DRAWING IS APPLICABLE TO THE FOLLOWING: TC CHANGE DOCUMENT CHECKED BY DATE

OTHER REVISIONS: ADDED & REVISED DWG. CONTINUATION REFERENCE AT ZONES C-3, D-3, D-5, E-2, E-3, PER MES09 STEP 3.1.2.4, REF LCR 13-081-UF5, REV. #

DOCUMENT TYPE CODE: DDDMEC
DRAWING NUMBER: 6M721-2271

DATE ISSUED TO IS: 10/1/13
REV: 13