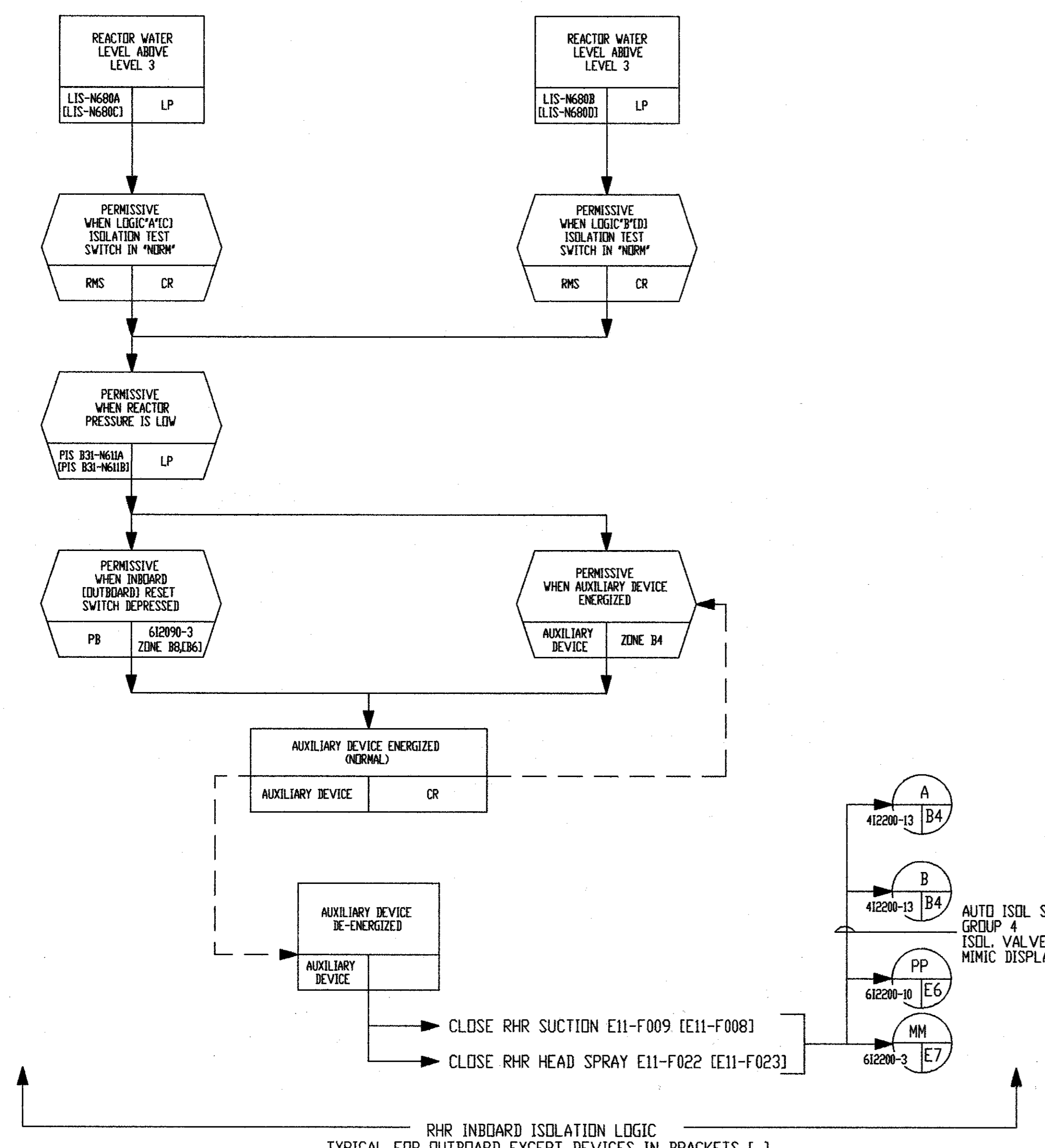
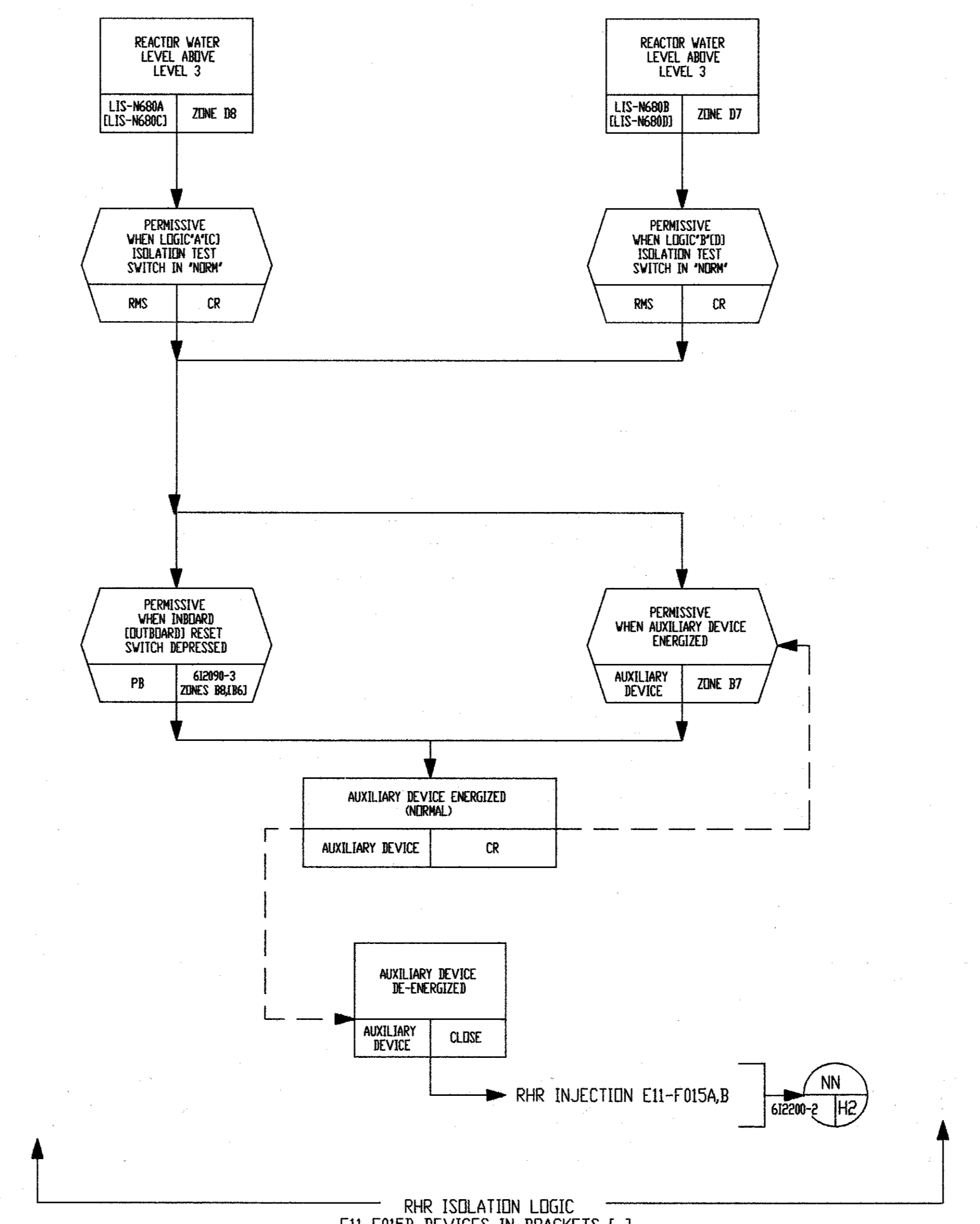


INBOARD ISOLATION LOGIC (EXCEPT MAIN STEAMNOTE 9) TYPICAL FOR OUTBOARD OR AS NOTED. OUTBOARD DEVICES IN BRACKETS []



RHR INBOARD ISOLATION LOGIC TYPICAL FOR OUTBOARD EXCEPT DEVICES IN BRACKETS []



RHR ISOLATION LOGIC E11-F015B DEVICES IN BRACKETS []

NOTES

1. SEE 61721-2090-1 FOR NOTES, REFERENCES, AND LEGEND.

61721-2090-02 LATEST REVISION C

NUCLEAR SAFETY RELATED

THIS IS AN AUTOCAD PRODUCED DRAWING. CHANGES OR REVISIONS MUST BE BROUGHT TO THE ATTENTION OF THE PLANT ENGINEERING DESIGN GROUP TO ENSURE THAT CONFIGURATION CONTROL IS MAINTAINED.

INC. CODE U		TITLE LOGIC DIAGRAM NUCLEAR BOILER SYSTEM	
PREPARED BY T.M. SIAK		DATE 4-22-94	
CHECKED BY sp		DATE 4-22-94	
APPROVED BY [Signature]		DATE 4-22-94	
DOCUMENT TYPE CODE DDINC		NUC OPS FILE NO 1801	
DRAWING NUMBER 61721-2090-02		ARMS RECEIPT # 6-21-94	