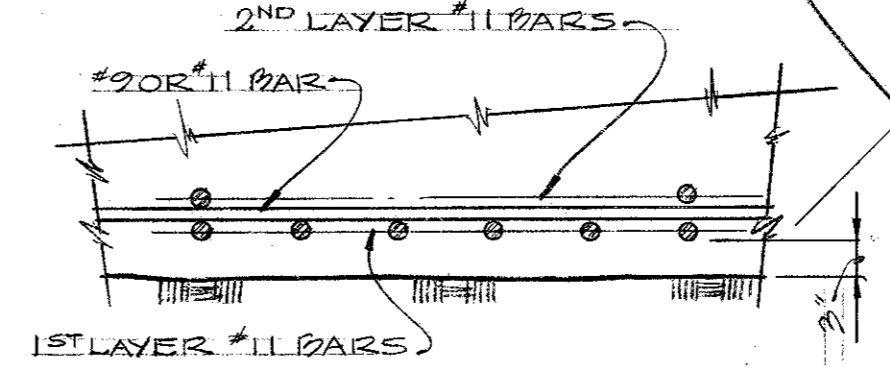
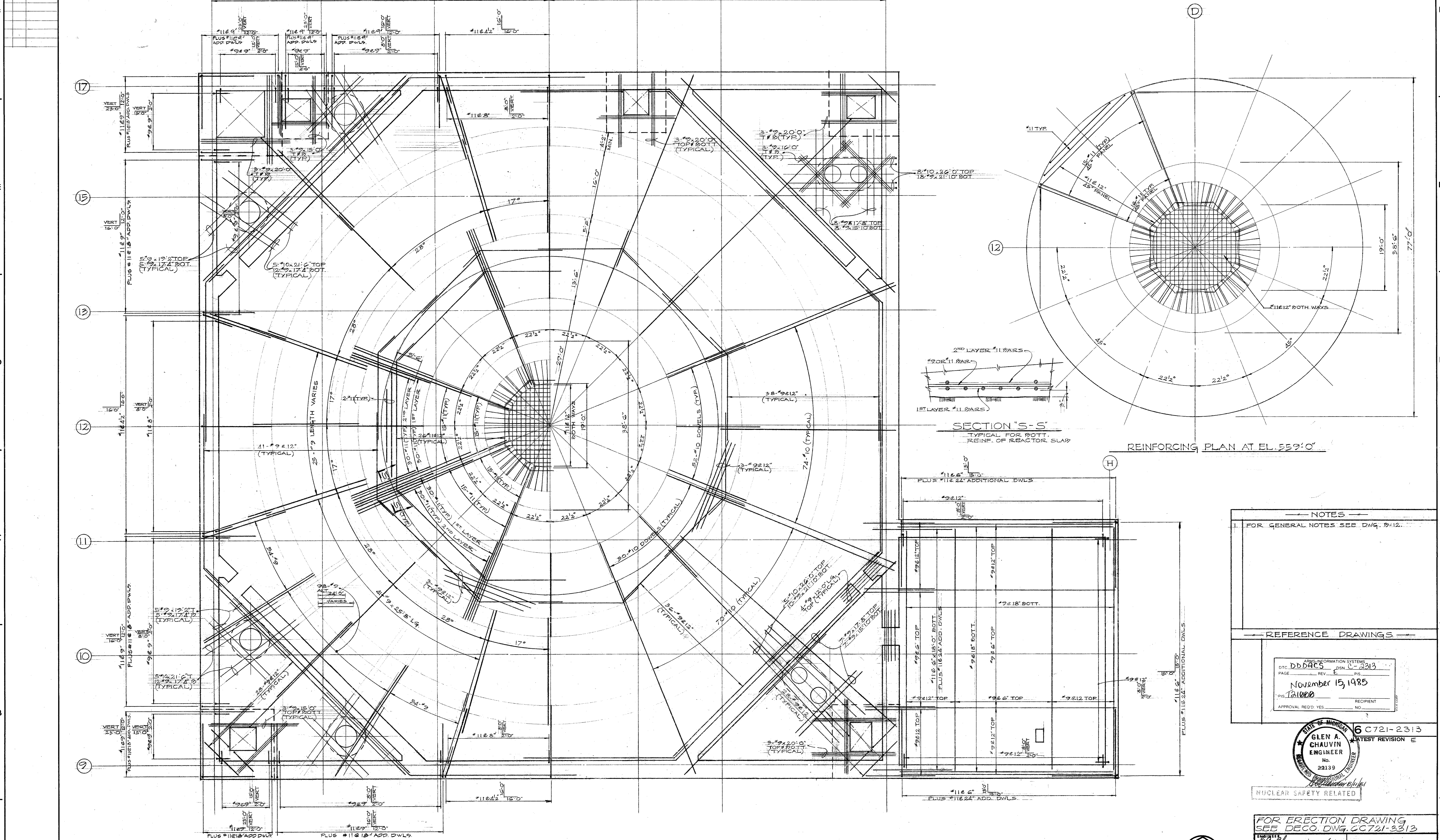


5 & L. REV. RECORD
REV. DATE
4-1-70 FOR CONSTR.
5-9-70 REV. CONSTR.
7-2-70 REV. CONSTR.

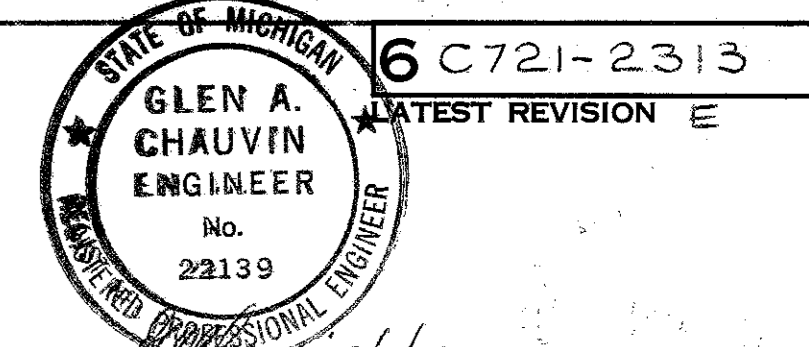


REINFORCING PLAN AT EL. 559'-0"

NOTES
FOR GENERAL NOTES SEE DWG. D-12.

REFERENCE DRAWINGS

DATE	11/15/85
REV.	1
NO.	22139
PROJECT	REACTOR AUXILIARY BUILDING FOUNDATION
UNIT	UNIT 2
LOCATION	ENRICO FORMI ATOMIC P.P.



FOR ERECTION DRAWING
SEE DECO. DWG. C721-3313

APPROVED
Glen A. Chauvin 4-1-70

DATE
12-19-69

CHECKED BY
K. CHHABLANI

DATE
3-31-70

PROJECT DESIGNER
DATE

PROJECT ENGINEER
DATE

PROJECT DIRECTOR
DATE

CHIEF DESIGN ENGINEER
DATE

REACTOR AUXILIARY BUILDING FOUNDATION
REINFORCING PLAN
UNIT 2
ENRICO FORMI ATOMIC P.P.

THE DETROIT EDISON COMPANY
ENGINEERING DESIGN AND SERVICES DEPARTMENT

DRAWING NUMBER
6C721-2313

SCALE
AS SHOWN

USE DIMENSIONS
UNLESS NOTED

ORDER WORK
BOP/IAO

NO.	DATE	BY	FOR	DESCRIPTION
1	4-1-70	[Signature]	FOR CONSTR.	ISSUED FOR CONSTRUCTION
2	5-9-70	[Signature]	REV. CONSTR.	REVISIONS TO REINFORCING PLAN
3	7-2-70	[Signature]	REV. CONSTR.	REVISIONS TO REINFORCING PLAN

NO.	DATE	BY	FOR	DESCRIPTION
1	4-1-70	[Signature]	FOR CONSTR.	ISSUED FOR CONSTRUCTION
2	5-9-70	[Signature]	REV. CONSTR.	REVISIONS TO REINFORCING PLAN
3	7-2-70	[Signature]	REV. CONSTR.	REVISIONS TO REINFORCING PLAN

ALL PREVIOUS REVISIONS TO THIS DOCUMENT HAVE BEEN APPROVED BY EDISON AND ARE FILED ON MICROFILM IN DOCUMENT CONTROL.

DOCUMENT CONTROL NO. T21-00-0
REACTOR AUXILIARY BUILDING FOUNDATION REINFORCING PLAN

