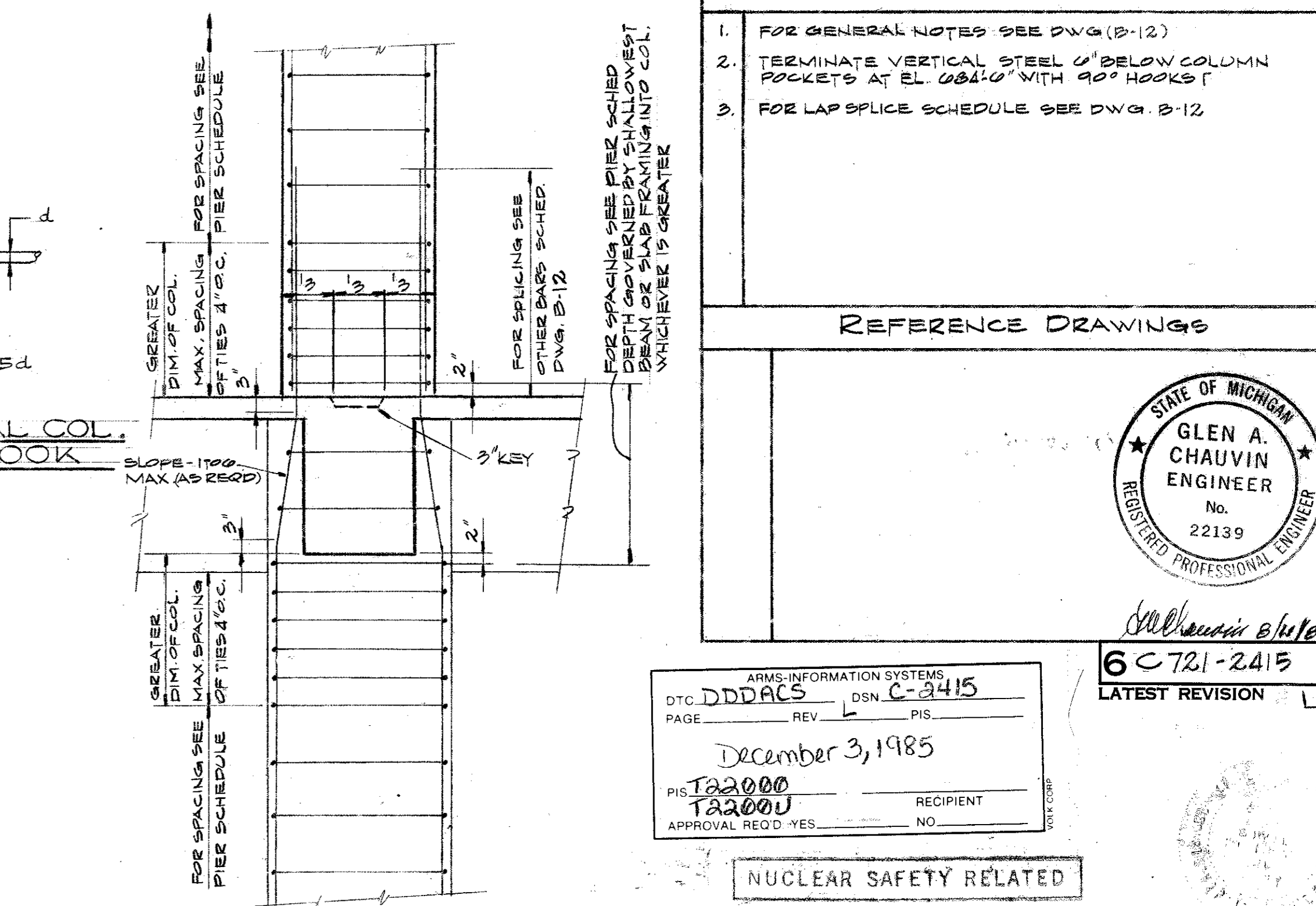
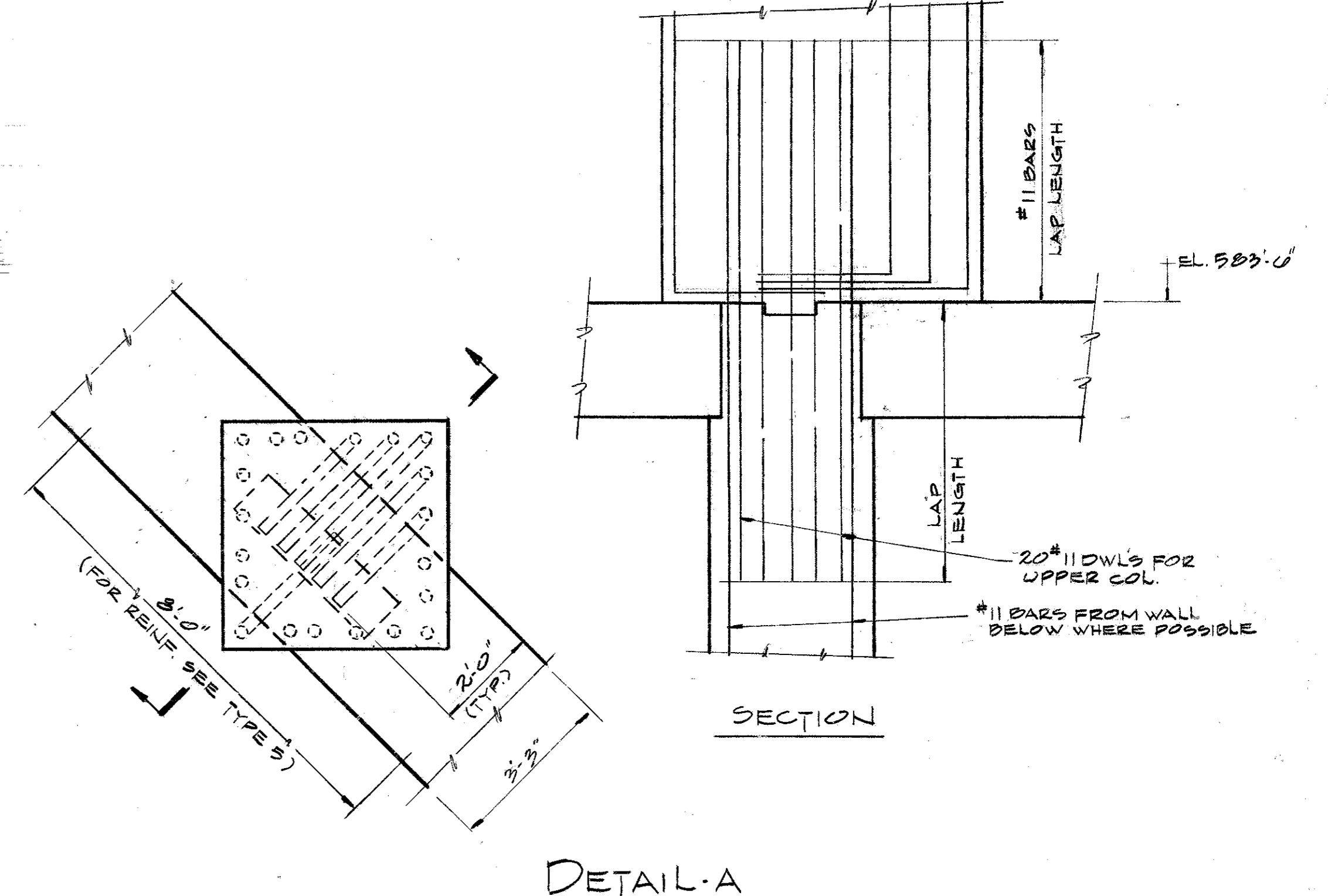
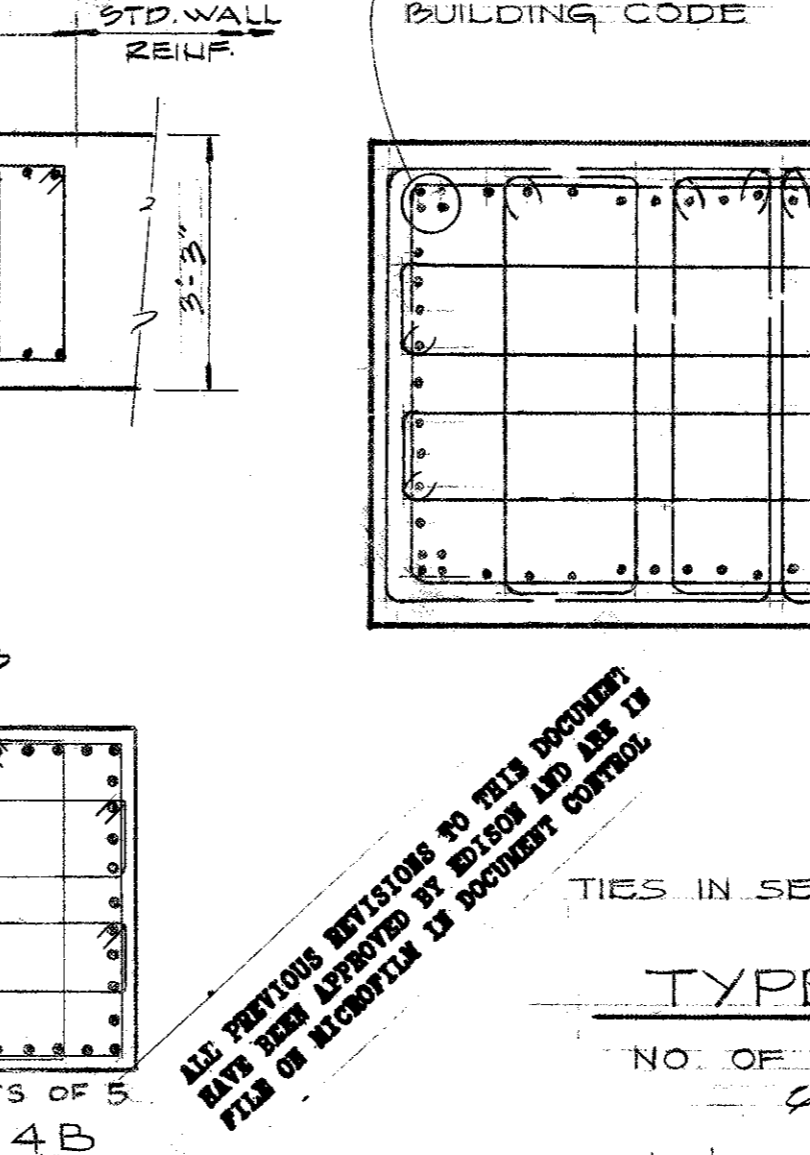
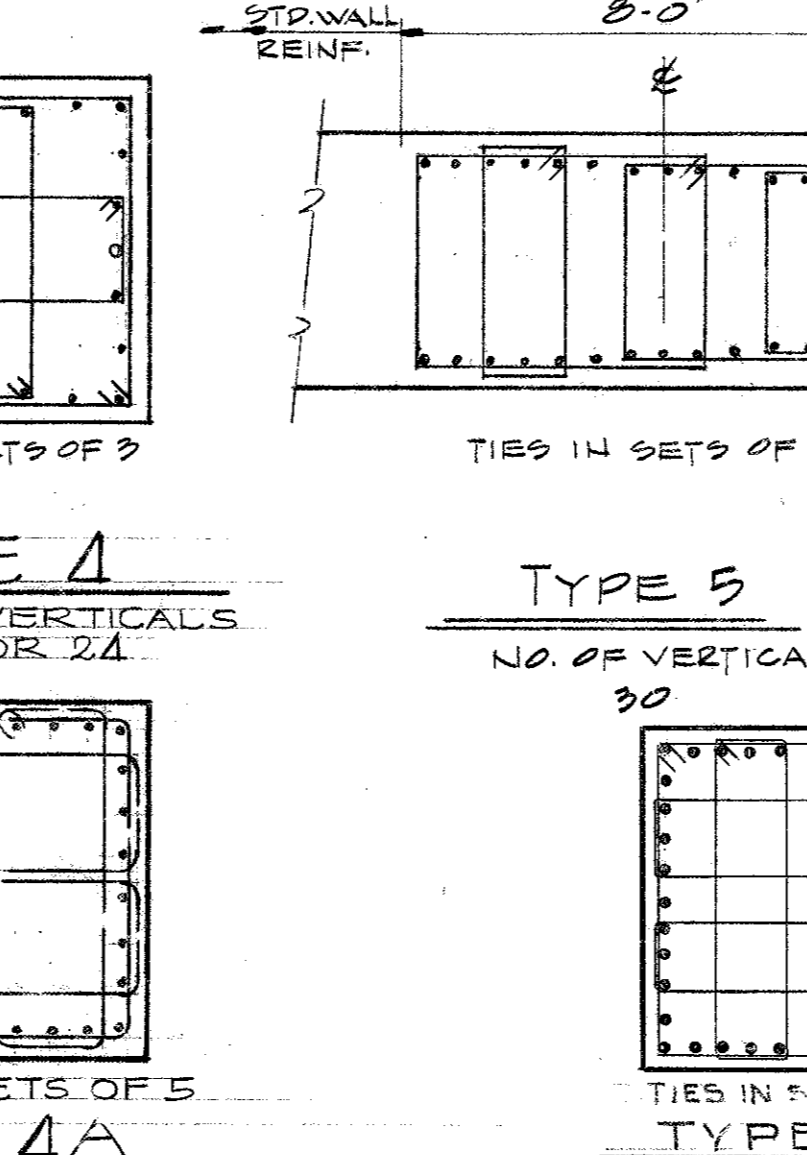
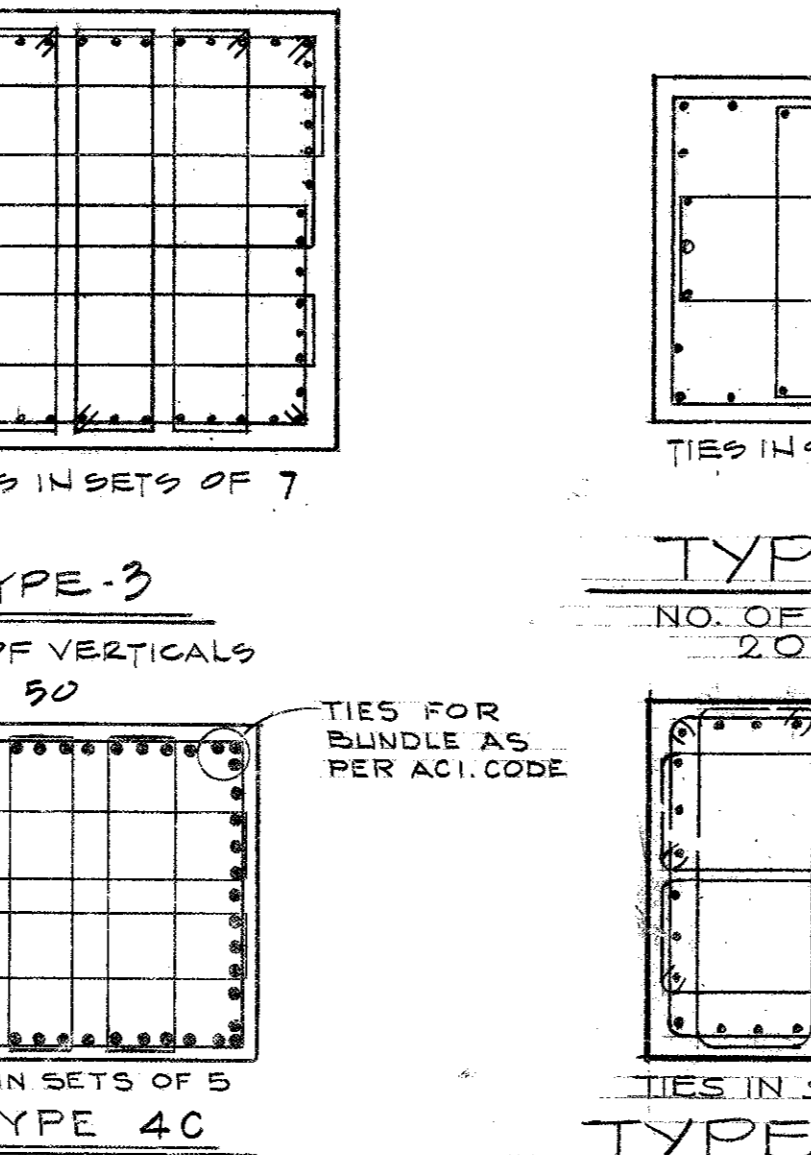
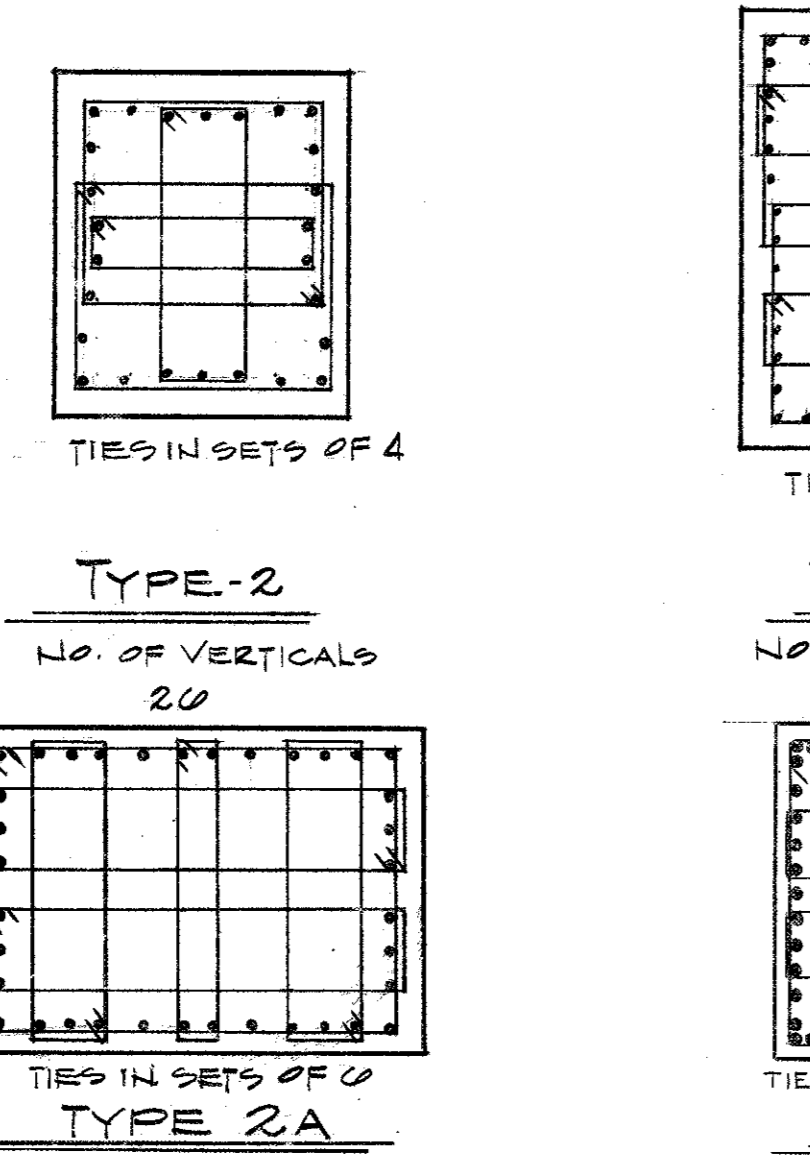
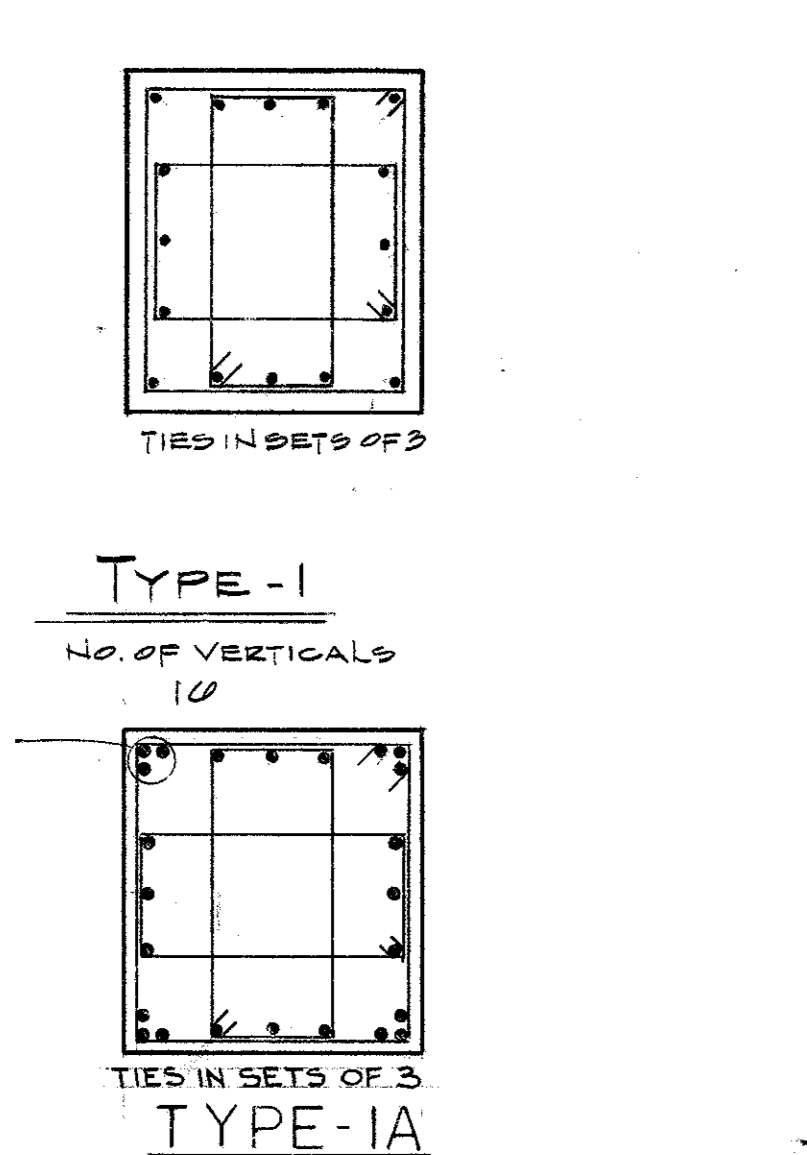
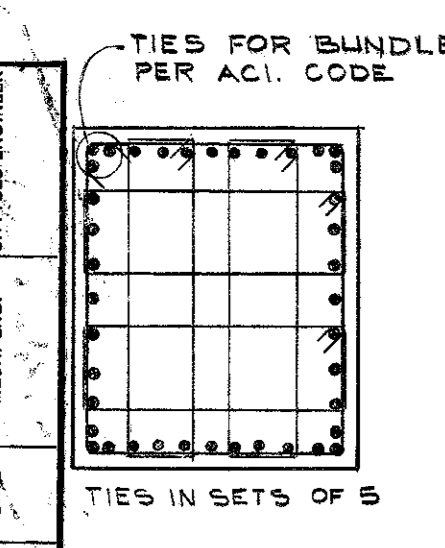
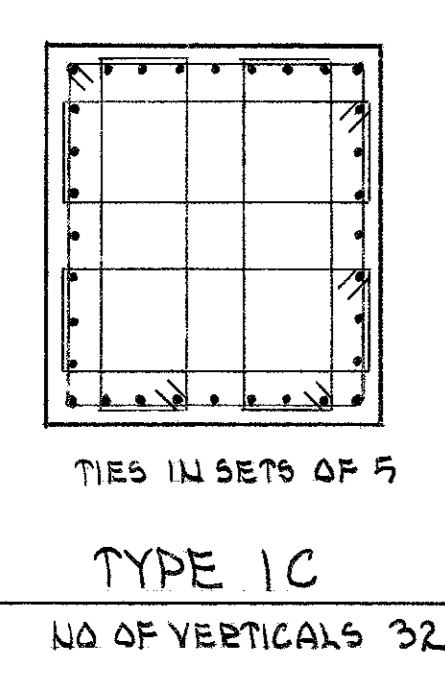
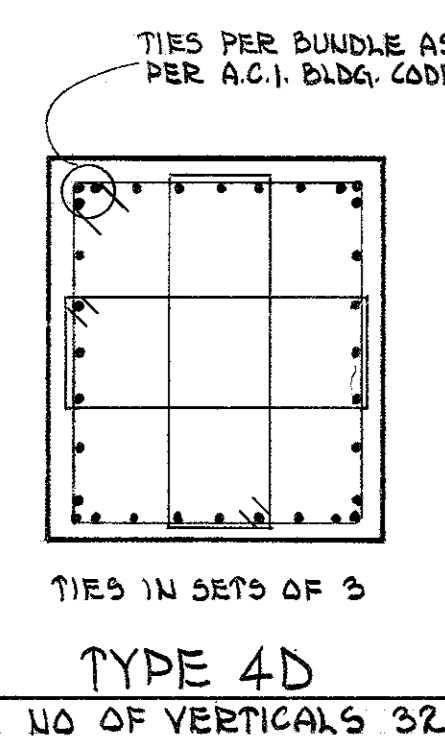
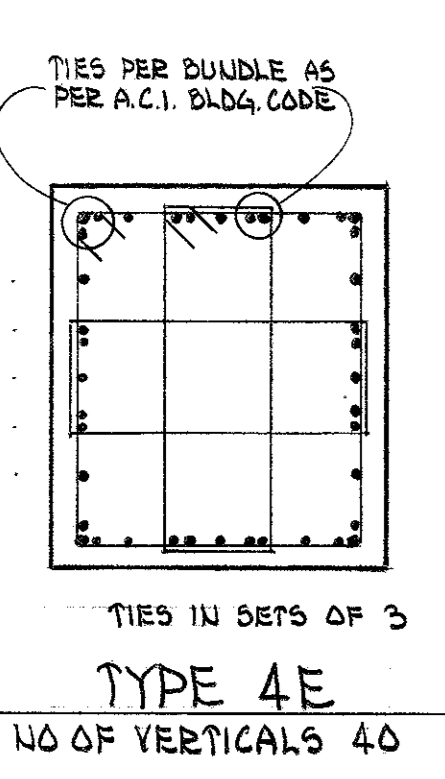


REVISION RECORD

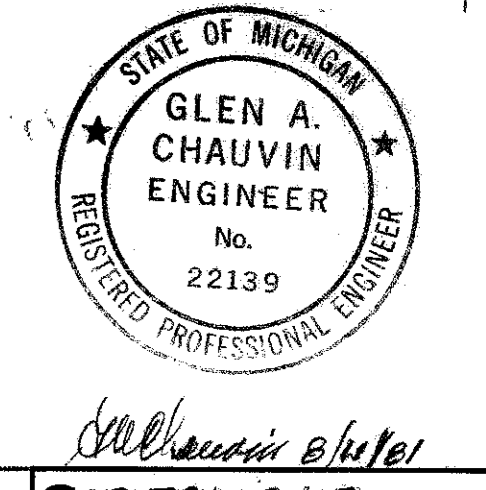
NO.	DATE	DESCRIPTION
1-10	FOR CONSTR.	
11-20	REV. CONSTR.	
21-30	REV. CONSTR.	

ELEVATION	Dwg. No.	PIER MARK	PIER SCHEDULE																															
			A9	A10	A11	A12	A13	A14	A15	A16	A17	A18	A19	A20	A21	A22	A23	A24	A25	A26	A27	A28	A29	A30	A31	A32	A33	A34	A35	A36	A37	A38	A39	A40
EL. 0241.0' / EL. 0771.0'			[Grid of Pier Data]																															
EL. 0391.0'			[Grid of Pier Data]																															
EL. 0431.0' / EL. 0411.0'			[Grid of Pier Data]																															
EL. 0131.0'			[Grid of Pier Data]																															
EL. 583.0'			[Grid of Pier Data]																															
EL. 540.0'			[Grid of Pier Data]																															



- NOTES
- FOR GENERAL NOTES SEE DWG. (D-12)
 - TERMINATE VERTICAL STEEL 0' BELOW COLUMN POCKETS AT EL. 0411.0' WITH 90° HOOKS
 - FOR LAP SPLICE SCHEDULE SEE DWG. D-12

REFERENCE DRAWINGS



6 C 721-2415
LATEST REVISION

NUCLEAR SAFETY RELATED

FOR ERECTION DRAWING SEE DECO. DWG. GC721-3A15

REVISION RECORD

NO.	DATE	DESCRIPTION
1	11-17	REVISED PIER SCHEDULE P9, F0
2	11-17	ADDED TYPES 1C, 4A, 4B, 5A, 5B, 6A, 6B TO SCHEDULES ABOVE EL. 0411.0' ADDED NOTE
3	12-1	ADDED REINFORCING BETWEEN EL. 0411.0' & EL. 0431.0' ADDED PIER TYPE 1B
4	12-1	REVISED PIER SCHEDULE BETWEEN EL. 583.0' & EL. 0131.0' ADDED PIER TYPE 1A
5	12-1	ADDED TYPE 1A, 2A, 3A TO SCHEDULES ABOVE EL. 0411.0'
6	12-1	ADDED TYPE 4A, 4B TO SCHEDULES ABOVE EL. 0411.0'
7	12-1	ADDED TYPE 5A, 5B TO SCHEDULES ABOVE EL. 0411.0'
8	12-1	ADDED TYPE 6A, 6B TO SCHEDULES ABOVE EL. 0411.0'

DOCUMENT CONTROL NO. 10-22000

6 C 721-2415

December 3, 1985

RECEIVED 3-31-79

NUCLEAR SAFETY RELATED

REACTOR BUILDING AUXILIARY BUILDING CONCRETE PIER SCHEDULE UNIT 2

LOCATION: ENGINEERING DESIGN AND SERVICES DEPARTMENT

DRAWING NUMBER: 6 C 721-2415