

## Appendix 13B. Figures

Figure 13-1. Corporate Organization

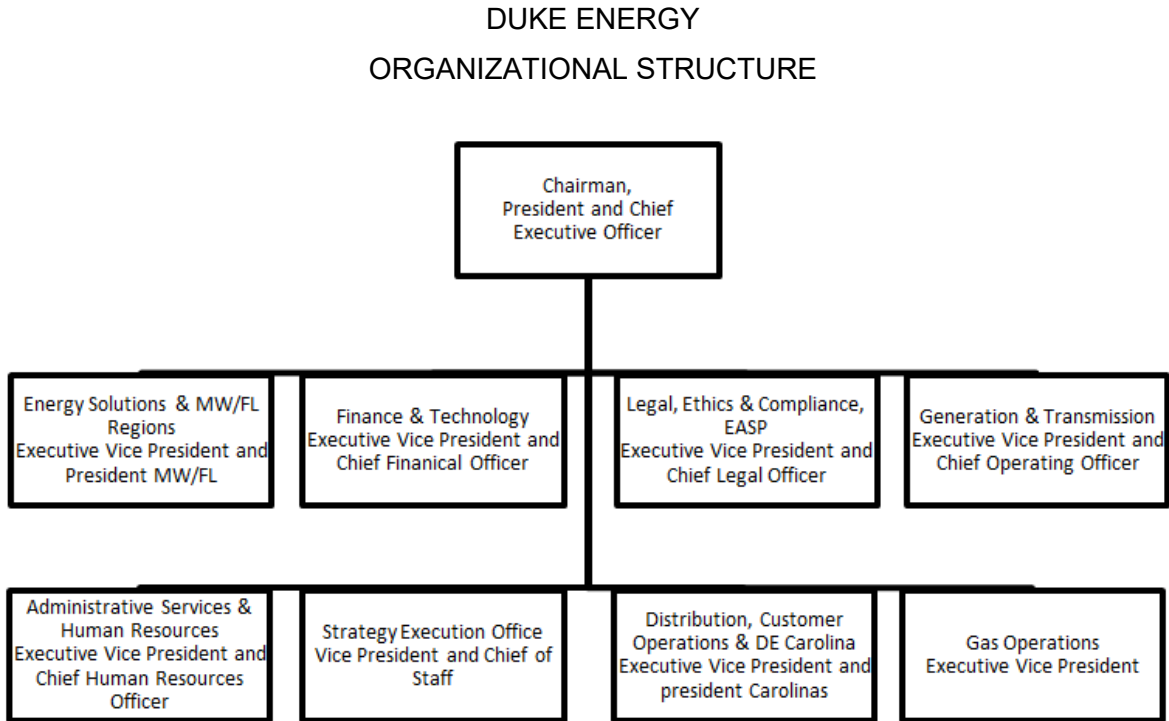


Figure 13-2. Nuclear Generation

NUCLEAR ORGANIZATIONAL STRUCTURE

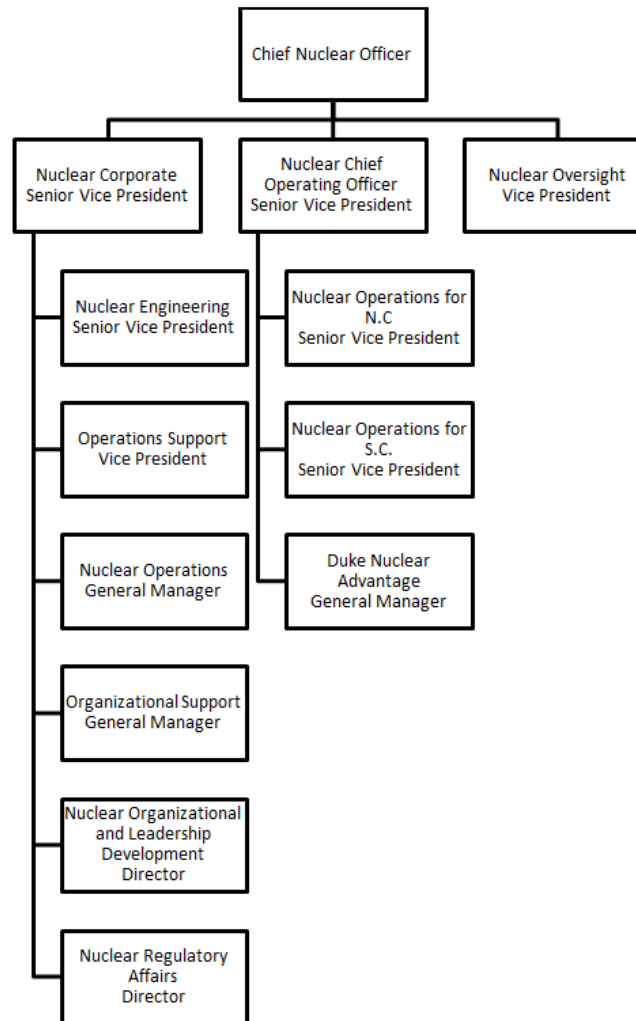
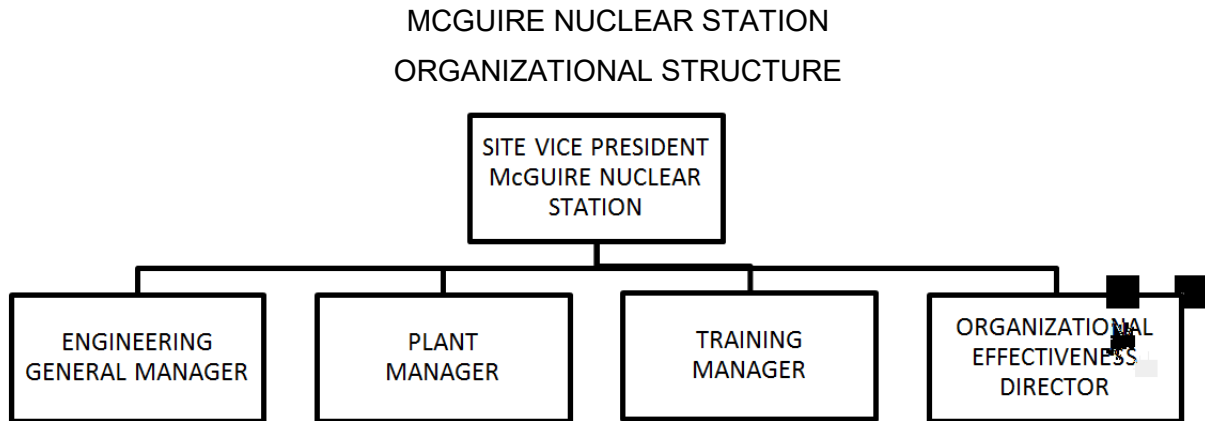


Figure 13-3. Nuclear Operations



**Figure 13-4. Deleted Per 2012 Update**

**Figure 13-5. Deleted Per 2012 Update**

**Figure 13-6. Deleted Per 1992 Update**

**Figure 13-7. Deleted Per 1992 Update**

Figure 13-8. "At the Controls" Definition



Surveillance Area



Area authorized to verify the receipt of an annunciator alarm or initiate corrective action in the event of an emergency affecting the safety of operations.

