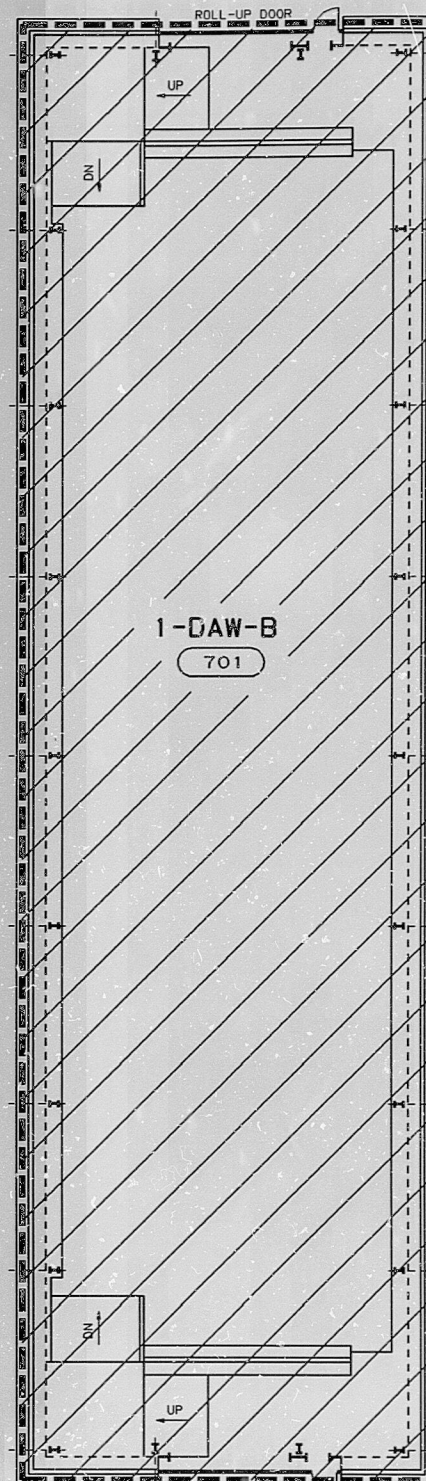
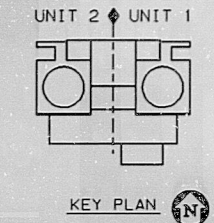


DRY ACTIVE WASTE PROCESSING BUILDING PLAN



DRY ACTIVE WASTE STORAGE BUILDING PLAN



NOTES:  
1. THE BACKGROUND USED ON THIS DRAWING IS PROVIDED FOR ORIENTATION PURPOSES ONLY.

LEGEND	
	3 HR RATED FIRE AREA BOUNDARY
	UNRATED FIRE AREA BOUNDARY
	3 HR RATED BOUNDARY
	2 HR RATED BOUNDARY
	WET PIPE SPRINKLER SYSTEM
	HALON SYSTEM
	FIRE HOSE CABINET
	FIRE HOSE REEL
	PORTABLE EXTINGUISHER (DRY CHEMICAL)
	EXIT SIGN LOCATION
	FIRE ALARM PULL BOX
	KNOCK OUT PANEL
	FIRE ZONE BOUNDARY
	FIRE ZONE DESIGNATOR

APERTURE CARD

SOUTHERN COMPANY SERVICES, INC. BIRMINGHAM, ALABAMA		
GEORGIA POWER COMPANY ALVIN W. VOGTLE NUCLEAR PLANT		
FIRE AREAS DRY ACTIVE WASTE PROCESSING & STORAGE BUILDING FLOOR PLANS		
SCALE: NONE	DRAWING NO.	REV.
JOB NO. 10604	AX4DJ8049	0

△					
△					
△					
△	ISSUED PER REA 97-VAA680	3-30-98	JGM	GS	PMA JGA
NO.	REVISIONS	DATE	DR	CHK	APPV DTL

THIS DOCUMENT CONTAINS PROPRIETARY, CONFIDENTIAL, AND/OR TRADE SECRET INFORMATION OF THE SUBSIDIARIES OF THE SOUTHERN COMPANY OR OF THIRD PARTIES. IT IS INTENDED FOR USE ONLY BY EMPLOYEES OF, OR AUTHORIZED CONTRACTORS OF, THE SUBSIDIARIES OF THE SOUTHERN COMPANY. UNAUTHORIZED POSSESSION, USE, DISTRIBUTION, COPYING, DISSEMINATION, OR DISCLOSURE OF ANY PORTION HEREOF IS PROHIBITED.

SIZE C 17X22 CAD NAME  
A4DJ8049



PDR RDS

9910210203

9910210203

