

LEGEND

[Solid Line]	3 HR RATED FIRE AREA BOUNDARY
[Dashed Line]	UNRATED FIRE AREA BOUNDARY
[Diagonal Lines]	3 HR RATED BOUNDARY
[Dotted Line]	2 HR RATED BOUNDARY
[Cross-hatch]	PRE ACTION SPRINKLER SYSTEM
[Horizontal Lines]	HALON SYSTEM
[Circle with X]	FIRE HOSE CABINET
[Circle with Dot]	FIRE HOSE REEL
[Circle with Triangle]	PORTABLE EXTINGUISHER (DRY-CHEMICAL)
[Square with X]	EXIT SIGN LOCATION
[Square with Dot]	FIRE ALARM PULL BOX
[Square with Cross]	KNOCK OUT PANEL
[Dashed Line]	FIRE ZONE BOUNDARY
[XXX]	FIRE ZONE DESIGNATOR

ELECTRICAL CABLE LOCATION CROSS REFERENCE

FIRE ZONE	UNIT 1 E4 CODE	UNIT 2 E4 CODE
155	-	W2
156	-	W1
157A	-	W3
157B	-	W4

REVISIONS

NO.	DATE	DR	CHK	APPV	DTL
1	7-31-97	CD	EOG	MWD	

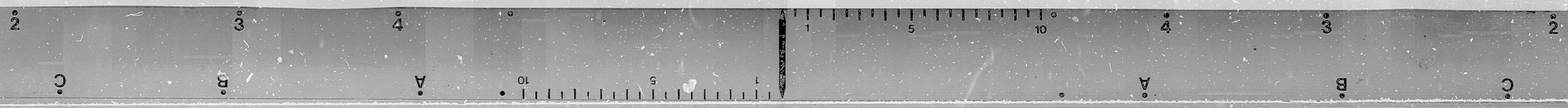
SOUTHERN COMPANY SERVICES, INC.
BIRMINGHAM, ALABAMA

GEORGIA POWER COMPANY
ALVIN W. VOGTLE NUCLEAR PLANT

FIRE AREAS
AUXILIARY FEEDWATER PUMP HOUSE
ROOF & FLOOR PLAN & DETAILS

SCALE: NONE	DRAWING NO.	REV.
JOB NO. 10604	AX4DJ8047	3

THIS DOCUMENT CONTAINS PROPRIETARY, CONFIDENTIAL, AND/OR TRADE SECRET INFORMATION OF THE SUBSIDIARIES OF THE SOUTHERN COMPANY OR OF THIRD PARTIES. IT IS INTENDED FOR USE ONLY BY EMPLOYEES OF, OR AUTHORIZED CONTRACTORS OF, THE SUBSIDIARIES OF THE SOUTHERN COMPANY. UNAUTHORIZED POSSESSION, USE, DISTRIBUTION, COPYING, DISSEMINATION, OR DISCLOSURE OF ANY PORTION HEREOF IS PROHIBITED.



PDR RIDS

9910210183

9910210183

